

# 12v battery and inverter connection





## Overview

---

Can a 12V inverter be connected to a 24v battery?

Let's say you have a 12V inverter and try to connect two 12V batteries in series. You would end up inputting 24V to the inverter and cause an overload. This could cause damage to your equipment, at the very least your inverter will shut down to protect itself.

How to connect inverter to battery?

A fuse or circuit breaker should be installed as part of the process of how to connect inverter to battery. Double-check polarity: ensure the positive and negative terminals of the battery match the corresponding terminals on the inverter. Reversing polarity can cause irreversible damage to the system and present safety hazards.

What voltage does a 12V inverter use?

So if you use 2, 5, or 10, 12V batteries the voltage would remain at 12V. This is important as your inverter will be designed for a specific input voltage - usually 12V or 24V. For example, if you connect together two 12V 100Ah batteries the voltage remains at 12V but you now have 200Ah of battery capacity.

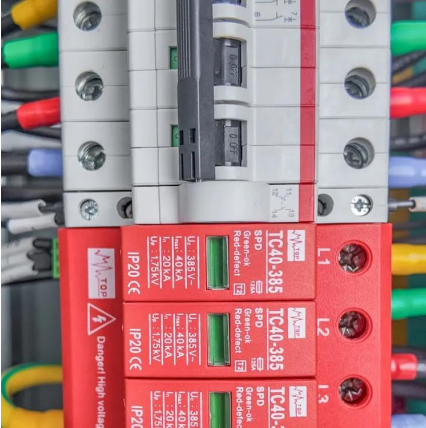
How many batteries can I connect to my inverter?

There is no set limit to how many batteries you can connect to your inverter. But you must understand how you connect your batteries together affects what you can and can't do! For example, connecting your batteries in series will be different to connecting in parallel.



## 12v battery and inverter connection

---



### [Inverter Battery Connection: Essential Tips For Safe And ...](#)

Learn essential tips for safe and efficient inverter battery connection. Discover step-by-step guides, wiring techniques, and troubleshooting tips to optimize your power backup system's ...

### [How to Connect an Inverter to a Battery: Step-by-Step Guide ...](#)

Mar 11, 2025 · Learn how to safely and efficiently connect an inverter to a battery with our step-by-step guide. Includes brand-specific tips for Solis, Deye, Megarevo, SRNE, and more. Perfect ...

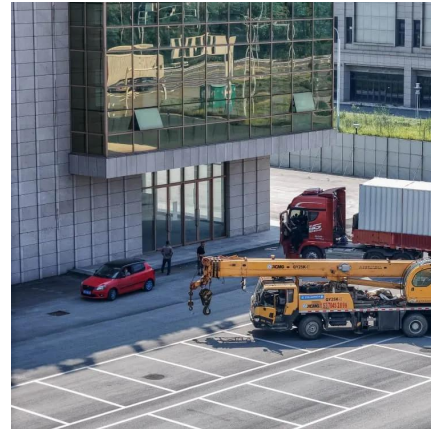


### [How to Wire Inverter to Battery - No Sparks. Just Power](#)

Jul 18, 2025 · How to wire an inverter to a battery? Connect the inverter's positive and negative terminals to the battery, add a fuse on the positive line, and double-check polarity. Key ...

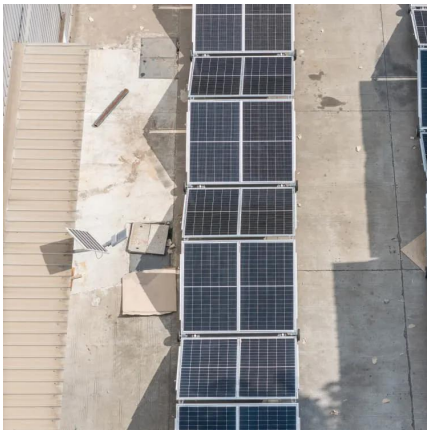
### [Can I Attach My Small Inverter Directly to the Battery?](#)

Jul 14, 2025 · Best Inverters for Direct Battery Connection Renogy 2000W Pure Sine Wave Inverter (RNG-INV-2000-12V) Ideal for off-grid setups, this 12V inverter delivers clean, stable ...



### [How to Connect a Large or Small Inverter to a Battery](#)

Nov 28, 2017 · by: Justin Gray This blog answers questions about which inverters can be powered by 12V DC accessory outlets (cigarette lighter sockets) and which require wiring ...



### [How to Safely Connect an Inverter to a Car Battery](#)

4 days ago · High-wattage inverters draw substantial current from the 12V battery, requiring thick conductors to prevent overheating and voltage drop. For example, a 2000-watt inverter might ...



## Contact Us

---

For catalog requests, pricing, or partnerships, please visit:  
<https://woodgoods.pl>



## Scan QR Code for More Information



<https://woodgoods.pl>