

166 PV Panel Dimensions





Overview

What are the dimensions of a 96-cell solar panel?

96-cell solar panel size. The dimensions of 96-cell solar panels are 41.5 inches long and 63 inches wide. That's a 41.5×63 solar panel.

What are the dimensions of standard solar panels?

Most solar panels are about 1.5 inches thick. The typical classification of solar panel sizes is based on the solar cell size, but it's not very useful for most calculations.

What is the typical thickness of solar panels?

Most solar panels are about 1.5 inches thick. The thickness (depth or height) is the only dimension that varies slightly among different solar panel models. The length and width of typical solar panels, along with their wattage and area or square footage, are also important factors to consider.

How many solar panels can fit on a roof?

To determine how many solar panels can fit on your roof, you'll first need to know the size of a solar panel. There's no standardized chart for this, but as an example, a 5kW solar system consists of 50 100-watt solar panels.



166 PV Panel Dimensions

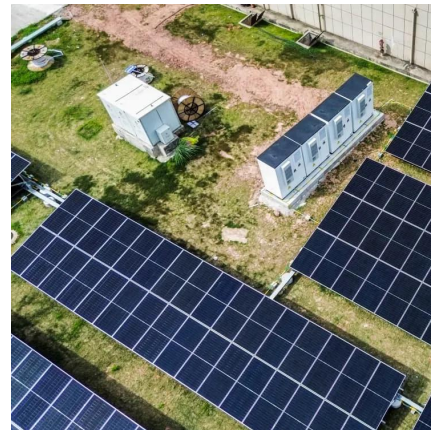


[Standard Solar Panel Sizes And Wattages \(100W-500W Dimensions\)](#)

1 day ago · 72-cell solar panel size. The dimensions of 72-cell solar panels are as follows: 77 inches long, and 39 inches wide. That's a 77×39 solar panel; basically, a longer panel, mostly ...

[Photovoltaic 166 Panels: The Solar Workhorse You Didn't ...](#)

As solar manufacturers play musical chairs with wafer sizes (182mm! 210mm!), the photovoltaic 166 panels remain the Goldilocks choice - not too big, not too small, just right for most ...



Contact Us

For catalog requests, pricing, or partnerships, please visit:
<https://woodgoods.pl>

Scan QR Code for More Information



<https://woodgoods.pl>