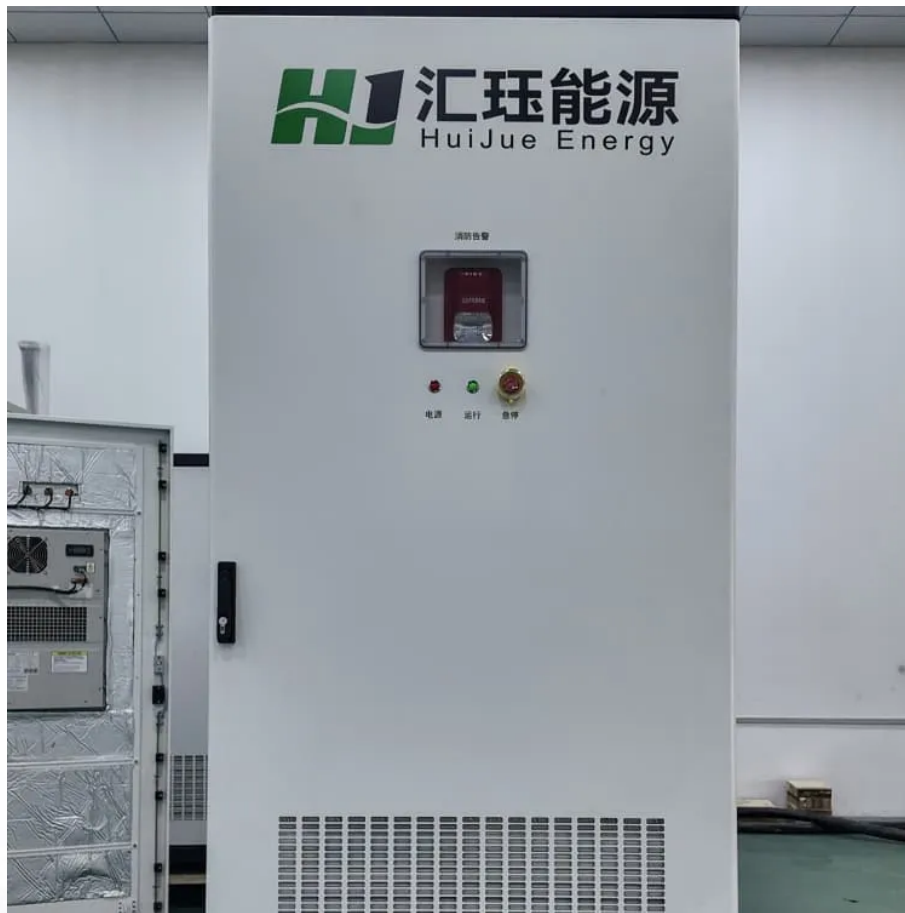


38aHow big a solar panel is used for solar cells





Overview

The standard solar panel size is approximately 66 x 39 inches and typically contains 60 cells. For commercial use, panels are usually 77 x 39 inches with 72 cells, offering higher power output. What are the standardized sizes of solar panels?

There are three standardized sizes of solar panels: 60-cell, 72-cell, and 96-cell. The dimensions of 60-cell solar panels are 66 inches long and 39 inches wide (66×39), while 72-cell solar panels have dimensions of 78 inches long and 40 inches wide (78×40). The 96-cell solar panel size is not mentioned in the passage.

How much wattage does a solar panel take?

Solar panel sizes and wattage range from 250W to 450W, taking up 1.6 to 2 square metres per panel. One of the most important things to consider when getting solar panels for your home is the specific solar panel size and dimensions.

How big is a 60 cell solar panel?

On average, 60 cell solar panels are 65 inches (1.65m) long, 40 inches (1m) wide, and about 1.5 inches (38mm) thick. The area of a 60 cell solar panel is generally about 18 ft² (1.68m²). The average length, width, and thickness of a 72 cell solar panel are 79 inches (2m), 40 inches (1m), and 1.5 inches (38mm) respectively.

What are the dimensions of a 96-cell solar panel?

96-cell solar panel size. The dimensions of 96-cell solar panels are 41.5 inches long and 63 inches wide. That's a 41.5×63 solar panel.



38aHow big a solar panel is used for solar cells



[How Big Is A Solar Panel? A Guide To The Different](#)

Jan 24, 2024 · The solar panels used in home solar installation usually consist of 60 or 72 solar cells. 72 cell solar panels produce more power and are generally bigger, but 60 cell solar ...

[Standard Solar Panel Sizes And Wattages \(100W-500W ...](#)

2 days ago · 72-cell solar panel size. The dimensions of 72-cell solar panels are as follows: 77 inches long, and 39 inches wide. That's a 77x39 solar panel; basically, a longer panel, mostly ...



[How Large is One Solar Panel? Key Factors and Calculations](#)

May 27, 2025 · When considering how large is one solar panel, a standard 60-cell module measures approximately 39 inches by 66 inches (about 3.25 feet by 5.5 feet), while the larger ...



[Guide to Solar Panel Sizes & Dimensions \(October 2025\)](#)

May 23, 2025 · Solar panel size refers to the total amount of power a solar panel can generate over a period of time Solar panel dimensions refers to the physical size of a solar panel Solar ...



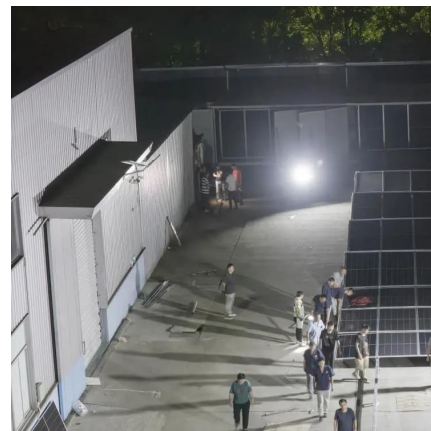
[Solar panel size: choosing the right dimensions](#)

Aug 31, 2024 · Solar panels are equipped with photovoltaic cells, which convert solar energy into electricity. While these cells come in two standard sizes, most manufacturers use cells that are ...



[How Big is a Solar Panel: Panel Size and Their Output Factors](#)

Feb 1, 2025 · You're probably wondering "how big is a solar panel" if you're planning to shift to solar power. Well, solar PV systems come in a considerable array of sizes. The size of the ...



Contact Us

For catalog requests, pricing, or partnerships, please visit:
<https://woodgoods.pl>



Scan QR Code for More Information



<https://woodgoods.pl>