

# 435w solar panel size





## Overview

---

What is a 435w solar panel?

The 435W solar panel represents a sweet spot in residential solar technology, offering high power output without the premium pricing of ultra-high wattage modules.

How big is a 435 watt solar panel?

The exact size of a 435 watt solar panel depends on the model. Generally, a 435 Watt solar panel has 72 cells or 144 half-cut cells. Its dimensions should be close to 77 x 39 inches. Our fulfillment centers are located both on East and West coasts of the USA.

Are 435 watt solar panels expensive?

They are modern and highly efficient and very expensive as well. Overall, the 435w solar panel price is slightly higher than average cost of a home PV module since this one has a lot more power in it. What size of 435 Watt solar panels do I need?

.

What are the electrical characteristics of 435w panels?

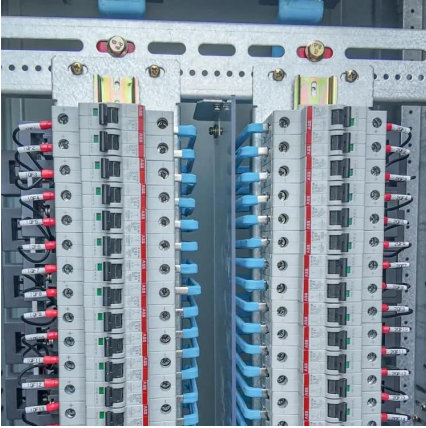
The electrical characteristics of 435W panels generally include:

**Monocrystalline Silicon:** The foundation of most 435W panels, monocrystalline cells offer superior efficiency and longevity. These cells are cut from single silicon crystals, providing uniform electrical properties and high power density.



## 435w solar panel size

---



### [LG LG435OAC-A6: 435W High Efficiency LG NeON® R...](#)

Get information on the LG 435W High Efficiency LG NeON® R Solar Panel with 66 Cells (6 x 11), Module Efficiency: 21.9%, Connector Type: MC4. Find pictures, reviews, and tech specs for ...

### [LG LG435OAC-A6: 435W High Efficiency LG NeON® R Solar Panel](#)

Get information on the LG 435W High Efficiency LG NeON® R Solar Panel with 66 Cells (6 x 11), Module Efficiency: 21.9%, Connector Type: MC4. Find pictures, reviews, and tech specs for ...



## Contact Us

---

For catalog requests, pricing, or partnerships, please visit:  
<https://woodgoods.pl>

**Scan QR Code for More Information**



<https://woodgoods.pl>