

Base station wind power source operating temperature





Overview

What is the maximum temperature a wind turbine can operate at?

Post the deliberations at the July-end meeting, the CEA said that under normal conditions, the maximum temperature for operation at rated capacity is 40°C, without de-rating. Besides, the extreme temperature range for standard wind turbine classes should be from -20°C to +50°C.

Can a wind turbine be rated at 40°C?

The Power Ministry has instructed that wind power plants with WTGs operating at rated output at 40°C and having no de-rating of capacity below 40°C will be compliant with normal operating range of the International Electrotechnical Commission (IEC) standard. De-rating a wind turbine means operating it at lower power than it can deliver.

What is the maximum temperature a power plant can operate at?

Last month, the Central Electricity Authority (CEA) held deliberations with stakeholders to resolve this issue. Post the deliberations at the July-end meeting, the CEA said that under normal conditions, the maximum temperature for operation at rated capacity is 40°C, without de-rating.

What are the new guidelines for wind turbine generators?

The Ministry of Power has issued new guidelines for Wind Turbine Generators (WTGs), specifying that turbines capable of operating at full capacity up to 40°C,

in accordance with the IEC 61400-1 standard, will be considered for grid connectivity.



Base station wind power source operating temperature



[Optimal Configuration of Wind-PV and Energy Storage in ...](#)

The investment in the energy base is mainly used for the construction and operation of wind power, photovoltaic, thermal power, UHV, DC transmission, battery energy ...

[CEA issues new temperature range for wind turbine operation](#)

India added 770 MW of wind energy capacity in Q2 2024, a 32% decline year-over-year from 1,139.9 MW in Q2 2023 and a 33% drop quarter-over-quarter, according to the ...



[DESIGN AND SIMULATION OF WIND TURBINE ENERGY ...](#)

Abstract- The increasing demand for wireless communication services in rural areas has necessitated the installation of more base stations. The challenge in these regions ...



[THE USE OF A LARGE CLIMATE CHAMBER FOR EXTREME ...](#)

Focusing on offshore wind energy the temperature variations are not that extreme, not taking into account the planned arctic offshore wind farms. Nevertheless, the validation of ...



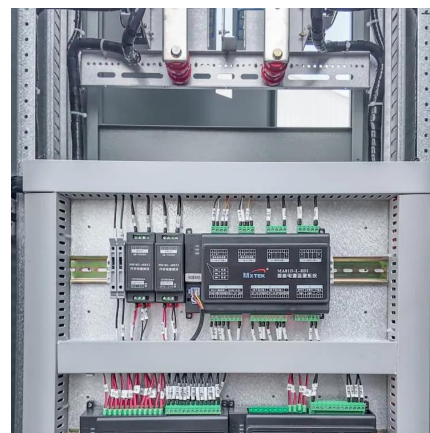
[CEA Clarifies Temperature Range for Operation of Wind ...](#)

The meeting was convened in response to concerns the Wind Power Producers Association raised regarding difficulties in securing these approvals. The challenges primarily ...



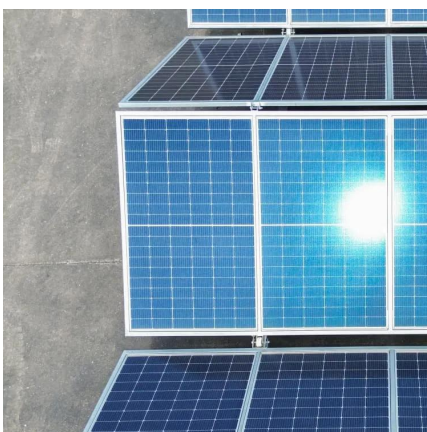
[\(PDF\) Design of an off-grid hybrid PV/wind power system for ...](#)

The study [4] has discussed the energy efficiency of telco base stations with renewable sources integration and the possibility of base stations switching off during low ...



[DNV-RP-0363 Extreme temperature conditions for wind ...](#)

This recommended practice (RP) provides principles, technical requirements, and guidance for design, and documentation of wind turbines in extreme temperatures.





[\(PDF\) Design of an off-grid hybrid PV/wind ...](#)

The study [4] has discussed the energy efficiency of telco base stations with renewable sources integration and the possibility of base stations switching off during low traffic or base station



[How to make wind solar hybrid systems for telecom stations?](#)

Therefore, to ensure stable and reliable power supply operation during communication base stations, new energy sources need to be developed and applied. With the development of

...

[Optimal Configuration of Wind-PV and ...](#)

The investment in the energy base is mainly used for the construction and operation of wind power, photovoltaic, thermal power, UHV, DC transmission, battery energy storage, and heating projects in the ...



[CEA issues new temperature range for wind ...](#)

India added 770 MW of wind energy capacity in Q2 2024, a 32% decline year-over-year from 1,139.9 MW in Q2 2023 and a 33% drop quarter-over-quarter, according to the source. In December 2023, the ...



Contact Us

For catalog requests, pricing, or partnerships, please visit:
<https://woodgoods.pl>

Scan QR Code for More Information



<https://woodgoods.pl>