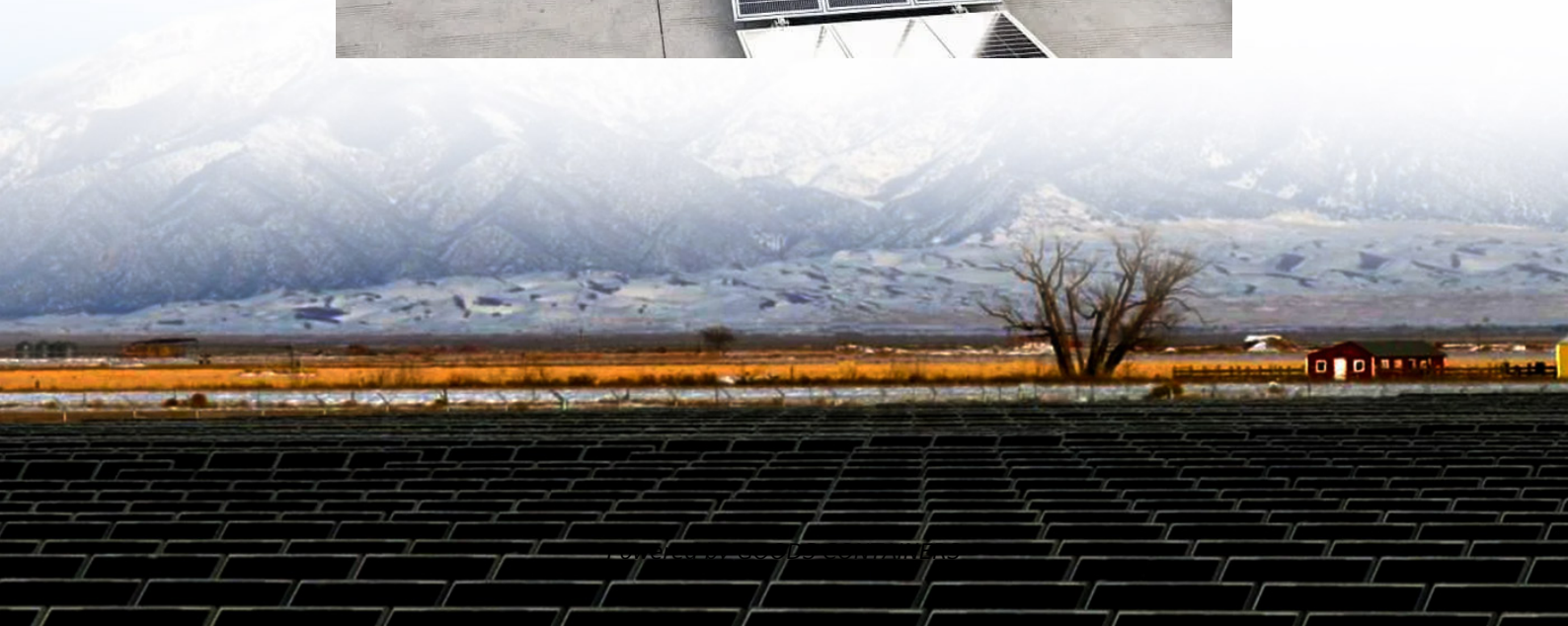


Battery Energy Storage Power Station Accessories





Overview

What are battery storage power stations?

Battery storage power stations are usually composed of batteries, power conversion systems (inverters), control systems and monitoring equipment. There are a variety of battery types used, including lithium-ion, lead-acid, flow cell batteries, and others, depending on factors such as energy density, cycle life, and cost.

What is a battery Energy Storage Connector?

Battery Energy Storage Connectors are vital components in modern energy systems, enabling efficient power transfer between batteries, inverters, and storage units. This guide covers types, safety standards, and installation best practices, with data-driven insights for engineers, installers, and renewable energy professionals 1.

What is battery energy storage?

What is Battery Energy Storage ?

Battery energy storage is an advanced technology that enables the capture and release of energy stored in batteries. This can be done to support the grid, provide backup power, or even store energy generated by renewable resources like solar and wind.

Why do battery storage power stations need a data collection system?

Battery storage power stations require complete functions to ensure efficient operation and management. First, they need strong data collection capabilities to collect important information such as voltage, current, temperature, SOC, etc.



Battery Energy Storage Power Station Accessories

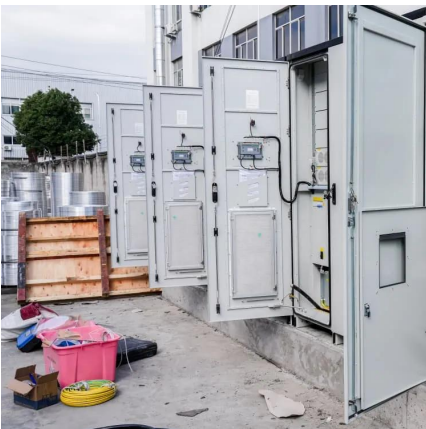


[Leading Energy Storage System Integrator](#)

Dec 8, 2025 · Shanghai Gogreen Energy Co., Ltd. specializes in lithium-ion energy storage integration and offers comprehensive one-stop integrated services, including product sourcing, ...

What Are the Essential Renewable Portable Power Station Accessories

Apr 11, 2025 · What Are the Must-Have Accessories for Renewable Power Stations? Critical accessories include solar panels for recharging, power inverters for AC output, portable ...



[Battery Energy Storage Connectors: Types, Safety, Solutions](#)

Apr 7, 2025 · Table of Contents Battery Energy Storage Connectors are vital components in modern energy systems, enabling efficient power transfer between batteries, inverters, and ...

[Battery storage power station - a comprehensive guide](#)

3 days ago · This article provides a comprehensive guide on battery storage power station (also known as energy storage power stations). These facilities play a crucial role in modern power ...



[Portable Power Station Accessories You Actually Need \(and ...\)](#)

4 days ago · Unlock the full potential of your portable power station with essential accessories like solar panels, expansion batteries, and protective cases, while avoiding unnecessary or risky ...



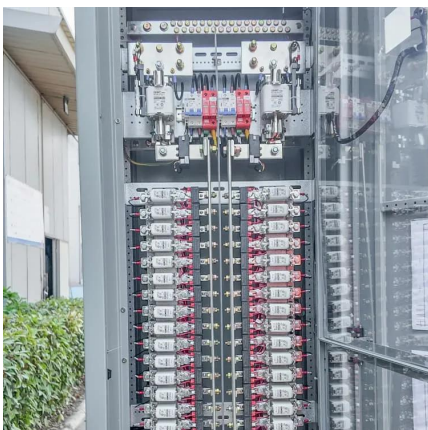
[Battery Energy Storage System Components \(BESS\)](#)

2 days ago · Power Connectors We offer power connectors for every aspect of BESS, from small terminals in the BMS, to large aluminum lugs for connecting into power infrastructure. For high ...



[What are the energy storage battery accessories? . NenPower](#)

Mar 1, 2024 · What are the energy storage battery accessories? 1. Energy storage battery accessories play a crucial role in enhancing the performance and longevity of energy storage ...





Contact Us

For catalog requests, pricing, or partnerships, please visit:
<https://woodgoods.pl>

Scan QR Code for More Information



<https://woodgoods.pl>