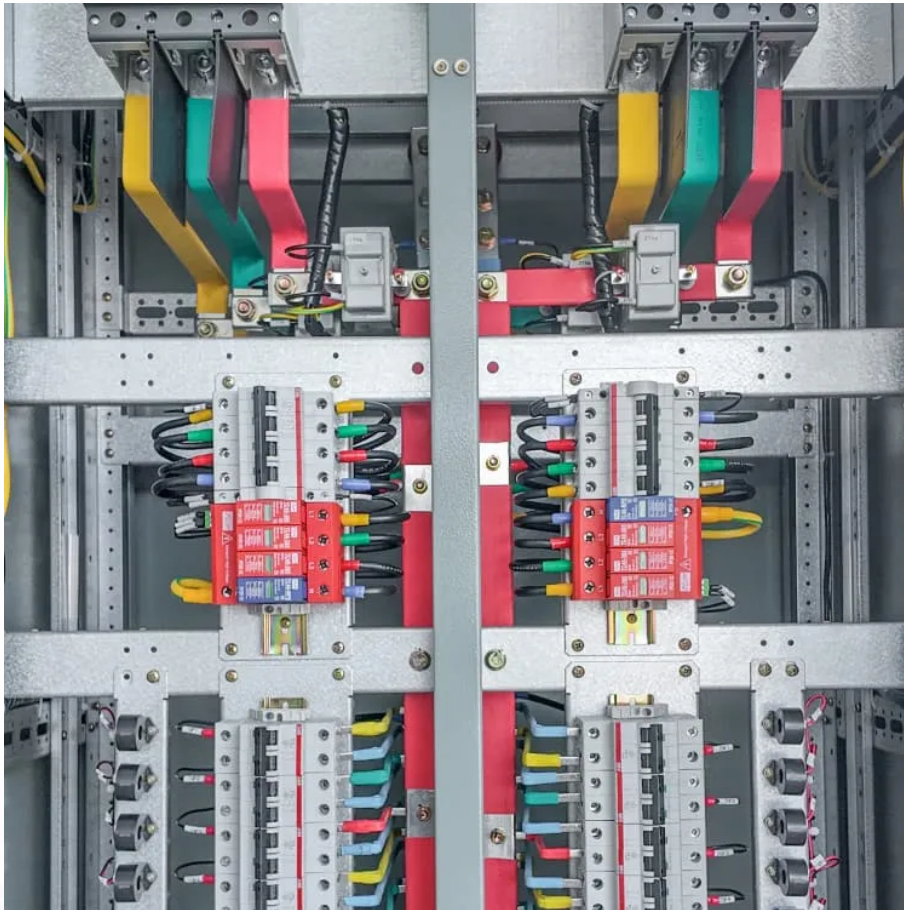


Battery cabinet current is unstable





Overview

Why do new batteries need to be derated?

The newly added cells or battery strings have to be derated based on the old battery strings, causing serious waste and reliability problems.

What factors affect the fault current in a battery?

Parameters that influence the Fault current The Open Circuit Voltage (OCV). The internal battery parameters are strongly dependent by the state of charge and the aging of the battery. The OCV decreases and the internal impedance of the battery increases as the battery is discharged or as it gets older.

What causes current imbalance in batteries connected in parallel?

Current imbalance in batteries connected in parallel is mainly caused by differences of cell parameters such as SOC, SOH, and internal resistance. To solve this problem, most manufacturers adopt the in-factory selection method. They.

What happens if a parallel battery fails?

Severe current imbalance will cause a failure in the parallel battery system. Therefore, new and old batteries cannot be used together. If one battery fails, the entire battery string cannot be used: Strings with different numbers of batteries cannot be connected in parallel. The battery replacement period is long.



Battery cabinet current is unstable



[White Paper on Active Current Balancing and Intelligent ...](#)

Dec 12, 2024 · This paper analyzes and describes voltage balancing management of lithium-ion battery cells connected in series, intelligent voltage balancing of modules, and active current ...

[LTC2949 exhibits unstable VREF during grid connection](#)

Mar 13, 2024 · Hello, Using LTC2949 for battery monitoring, the system voltage is 870V, and the current is collected through a shunt resistor. Please assist in confirming the possible causes of ...



[How to Test the Health of Your Low Voltage Cabinet ...](#)

Mar 13, 2024 · How to Test the Health of Your Low Voltage Cabinet Batteries Periodic tests to ensure battery health are highly recommended. Typically, batteries last from three to five ...

iMX280 unstable OFF state if the BATTERY pin is NOT used (leakage current)

Mar 8, 2013 · In my design, when the battery is first connected to DCDC_BATT, the iMX280 should be in the OFF state (until the PSWITCH input is activated). However, what I observed ...



[Lithium battery capacity cabinet principle and maintenance](#)

May 29, 2025 · Lithium battery capacity cabinet principle and maintenance As a key energy storage device, lithium battery capacity cabinet plays an important role in modern society. Its ...



[UBC80 Battery Cabinet Installation, Operation.](#)

Feb 3, 2025 · Review the battery system schematic that is located attached to the inside of a cabinet door to determine the number of batteries that need to be installed in the cabinet, the ...



[Unstable Charging Current while Powering a the System](#)

Oct 28, 2024 · Charge current will be reduced in an effort to power the system load. To achieve stable charging at the same time as powering the system total current draw between system ...





[How the battery aging cabinet works](#)

Oct 10, 2025 · The core working principle of the battery aging cabinet is to simulate the long-term use process of batteries in different environments and charging and discharging conditions, ...



[DESIGN FOR SAFE AND RELIABLE ELECTRICAL ...](#)

Jan 23, 2019 · The combination of the unpredictable fault current generated by the battery in conjunction with the current limiting effect of the line and fault impedances make very difficult ...

Contact Us

For catalog requests, pricing, or partnerships, please visit:
<https://woodgoods.pl>

Scan QR Code for More Information



<https://woodgoods.pl>