

Bridgetown 5G base station power consumption





Overview

Is 5G base station power consumption accurate?

esan@huawei.com Abstract—The energy consumption of the fifth generation (5G) of mobile networks is one of the major concerns of the telecom industry. However, there is not currently an accurate and tractable approach to evaluate 5G base stations (BSs) power consumption. In this article, we pr.

Should power consumption models be used in 5G networks?

This restricts the potential use of the power models, as their validity and accuracy remain unclear. Future work includes the further development of the power consumption models to form a unified evaluation framework that enables the quantification and optimization of energy consumption and energy efficiency of 5G networks.

What is 5G base station?

1. Introduction 5G base station (BS), as an important electrical load, has been growing rapidly in the number and density to cope with the exponential growth of mobile data traffic . It is predicted that by 2025, there will be about 13.1 million BSs in the world, and the BS energy consumption will reach 200 billion kWh .

What is 3GPP base station model?

The central specification body of cellular networks, the 3GPP, presents a base station model to facilitate energy efficiency improvements for 3GPP Release 18 in . It is based on the user equipment power model of the 3GPP in structure, presentation, and approach.



Bridgetown 5G base station power consumption



[Machine Learning and Analytical Power Consumption ...](#)

Jan 23, 2023 · Abstract--The energy consumption of the fifth generation (5G) of mobile networks is one of the major concerns of the telecom industry. However, there is not currently an ...

[Final draft of deliverable D.WG3-02-Smart Energy Saving ...](#)

May 7, 2021 · Change Log This document contains Version 1.0 of the ITU-T Technical Report on "Smart Energy Saving of 5G Base Station: Based on AI and other emerging technologies to ...



[Energy-efficiency schemes for base stations in 5G ...](#)

In today's 5G era, the energy efficiency (EE) of cellular base stations is crucial for sustainable communication. Recognizing this, Mobile Network Operators are actively prioritizing EE for ...



[Why does 5g base station consume so much power and how ...](#)

Apr 3, 2025 · The power consumption of the 5G base station mainly comes from the AU module processing and conversion and high power-consuming high radio frequency signals, the ...



[Power consumption based on 5G communication](#)

Oct 17, 2021 · At present, 5G mobile traffic base stations in energy consumption accounted for 60% ~ 80%, compared with 4G energy consumption increased three times. In the future, high ...



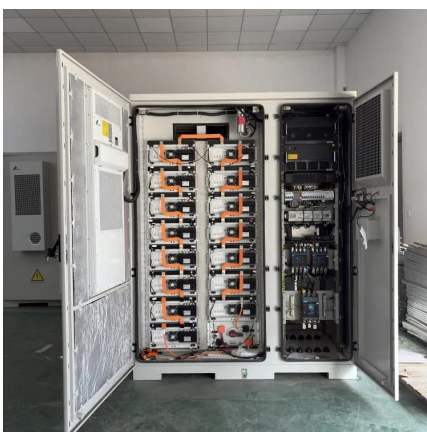
Comparison of Power Consumption Models for 5G Cellular Network Base

Download Citation , On Jul 1, 2024, Alexander M. Busch and others published Comparison of Power Consumption Models for 5G Cellular Network Base Stations , Find, read and cite all the ...



[Energy consumption optimization of 5G base stations ...](#)

Aug 1, 2023 · An energy consumption optimization strategy of 5G base stations (BSs) considering variable threshold sleep mechanism (ECOS-BS) is proposed, which includes the initial ...





Comparison of Power Consumption Models for 5G Cellular Network Base

Jul 1, 2024 · This paper conducts a literature survey of relevant power consumption models for 5G cellular network base stations and provides a comparison of the models. It highlights ...



[Modelling the 5G Energy Consumption using Real-world ...](#)

Sep 15, 2025 · Accurate energy consumption modeling is essential for developing energy-efficient strategies, enabling operators to optimize resource utilization while maintaining network ...

Contact Us

For catalog requests, pricing, or partnerships, please visit:
<https://woodgoods.pl>

Scan QR Code for More Information



<https://woodgoods.pl>