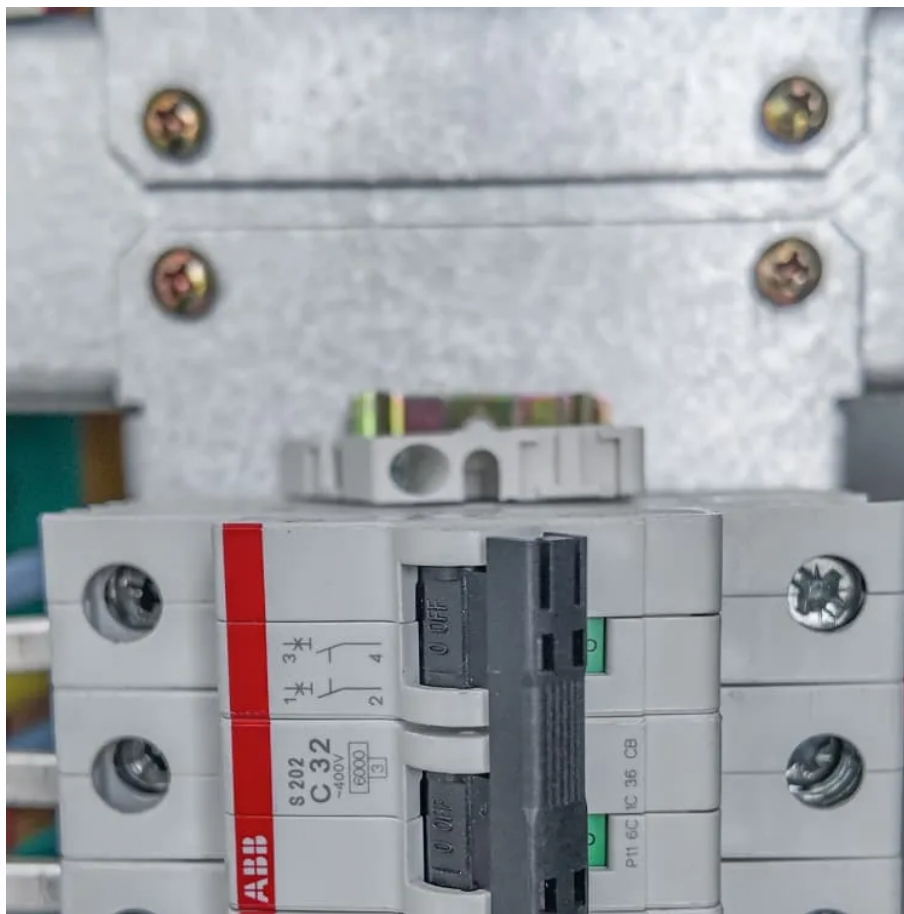


Can 36v inverter 48v be used





Overview

Can a 48v battery run a 36V motor?

Overheating and Damage: The primary risk of using a 48V battery with a 36V motor is overheating. Motors designed for 36V systems are not equipped to handle the increased voltage, which can lead to excessive heat generation. This overheating can cause permanent damage to the motor's windings and bearings, reducing its lifespan significantly.

What is a 36 volt inverter?

Looking for a 36 V inverter is often harder than finding a 12 V or 24V inverter since they are less common. Although not used as often, they still serve important roles in mid-range power applications. All of these higher-voltage systems should be used when powering equipment that draws over 3,000 W. Higher voltage is important for several reasons.

Can a 48 volt inverter run a battery?

When you use a 48-Volts inverter, you can use regular and more flexible connectors to connect the inverter to the battery bank. This is so because the thinner the wire, the higher the resistance. And if your DC voltage is lower, you will pass more current through the wires, and they can get very hot, and you lose a lot of battery power.

Do 48V power inverters work?

48V power inverters work perfectly in 48V solar systems, which are usually either small commercial or large residential. These inverters are typically paired with 48V PV modules and batteries of a comparable voltage.



Can 36v inverter 48v be used



[Can You Put A 36V Battery On A 48V Motor?](#)

May 8, 2025 · Worst-case scenario: short circuits or component burnout In short, the seemingly minor decision to use a 36V battery with a 48V motor can set off a chain reaction with both ...

[Going from single to split phase inverter on 48v system](#)

Aug 3, 2024 · I have 2x 3000w pure sine wave 36v inverters [used on 40v] 2 new 3500w inverter type generators, generators have a parallel box but that just doubles amps not voltage, I just ...



[Can You Use a 48V Battery with a 36V Motor? Expert Guide ...](#)

Jun 5, 2025 · Introduction - Addressing the Core Question Many people ask if a 48V battery can work with a 36V motor. Electric bike enthusiasts, DIY hobbyists, and technical users are drawn ...

[48V Motor with 36V Battery: Risks You Should Know](#)

Apr 3, 2025 · Using a 36V battery with a 48V motor reduces performance by 25%, increases heat generation, shortens component lifespan, and creates potential fire hazards due to higher ...



[Can You Use a 36V Battery on a 48V Motor: Understanding ...](#)

Nov 19, 2025 · Understanding Voltage and Motor Compatibility To address the question of using a 36V battery on a 48V motor, it's essential to understand the basics of voltage and motor ...



[What Happens If You Put 48V to a 36V Motor?](#)

Aug 17, 2024 · In the realm of electric vehicles, including e-bikes and golf carts, understanding the relationship between voltage and motor compatibility is crucial. When you introduce a 48V ...



Here's what I've learnt after using 12V, 24V, 36V & 48V inverter ...

Nov 10, 2025 · This was a 48V 3.5kVA Su-Kam Transformer-based Inverter with four 200Ah Su-Kam batteries connected in series and to a Su-Kam BMS. It was a robust system for me and ...





Contact Us

For catalog requests, pricing, or partnerships, please visit:
<https://woodgoods.pl>

Scan QR Code for More Information



<https://woodgoods.pl>