

Can Alofi inverter use lithium batteries





Overview

Does a lithium battery work with a solar inverter?

While lithium batteries can't work with every inverter, most modern solar and off-grid inverters now offer lithium compatibility. For optimal performance in home energy stems, choose an inverter specifically designed for lithium battery or LiFePO4 battery systems, and always verify compatibility before purchasing.

Do LiFePO4 batteries need a compatible inverter?

While all lithium batteries need compatible inverters, LiFePO4 batteries have additional requirements: Check manufacturer specifications for: Supported battery chemistries Voltage ranges Communication protocols (CAN bus, RS485 etc.) Look for inverters specifically listing: "Lithium battery compatible" "LiFePO4 supported".

Are lithium batteries compatible with LiFePO4 batteries?

The short answer is no - proper inverter matching is crucial for optimal performance and safety. Let's examine the key compatibility factors for lithium battery and LiFePO4 battery systems. Lithium batteries require specific inverter features: Voltage Matching Must support your battery bank's voltage (12V, 24V, 48V most common).

What is a lithium battery for inverter?

Lithium offers unmatched performance, a longer lifespan, and better efficiency than traditional batteries. Whether you're setting up a home backup system, solar power solution, or mobile energy unit, this guide will walk you through everything you need to know about lithium batteries for inverters. Part 1.



Can Alofi inverter use lithium batteries

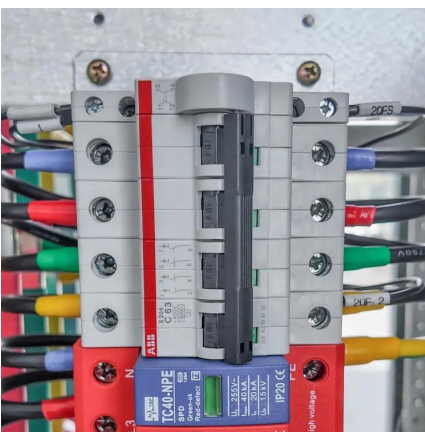


[Lithium Battery Combined With Inverter: Key Compatibility ...](#)

Jul 22, 2025 · Lithium batteries, including lithium-ion batteries and lithium iron phosphate batteries (LiFePO4), do not necessarily need to be paired with a specially designed inverter. However, ...

[Can I Connect Inverter to Lithium Battery?](#)

Oct 31, 2024 · Yes, you can connect an inverter to a lithium battery. Lithium batteries, particularly Lithium Iron Phosphate (LiFePO4) batteries, are well-suited for use with inverters due to their ...

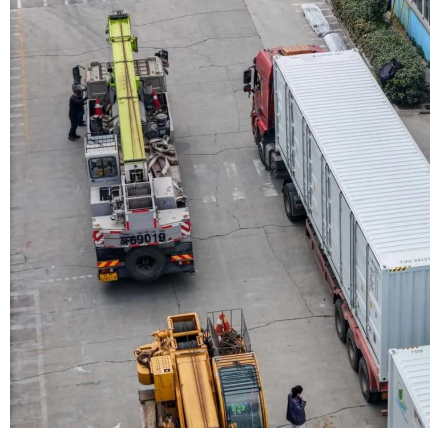


[Do You Need a Special Inverter for Lithium Batteries?](#)

Apr 22, 2024 · Effective setups often include inverters specifically designed or certified for use with lithium battery technology, as evidenced by multiple case studies and user reports. Risks ...

[How to Choose the Right Inverter for Lithium Batteries?](#)

Apr 11, 2025 · Answer: To choose the right inverter for lithium batteries, match the inverter's voltage and capacity to your battery's specifications, prioritize pure sine wave inverters for ...



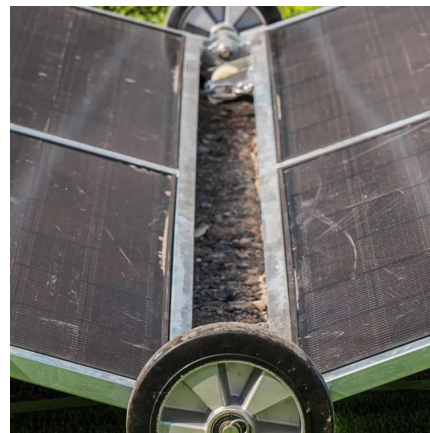
[Importance of Compatibility Between Inverter and Lithium Battery](#)

Oct 13, 2024 · Among these innovations, lithium batteries have emerged as the preferred choice for backup power due to their efficiency, longevity, and compact design. However, one key ...



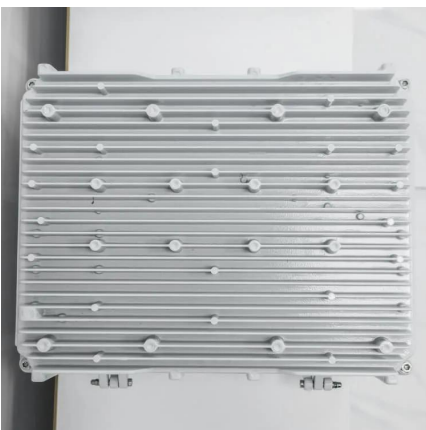
[Can Lithium Batteries Work With Any Type of Inverter?](#)

Jul 21, 2025 · The Bottom Line While lithium batteries can't work with every inverter, most modern solar and off-grid inverters now offer lithium compatibility. For optimal performance in home ...



[Can all inverters use lithium batteries?](#)

Nov 28, 2023 · Understanding Inverters and Batteries Understanding Inverters and Batteries In order to grasp the compatibility between inverters and lithium batteries, it's important to have a ...





Contact Us

For catalog requests, pricing, or partnerships, please visit:
<https://woodgoods.pl>

Scan QR Code for More Information



<https://woodgoods.pl>