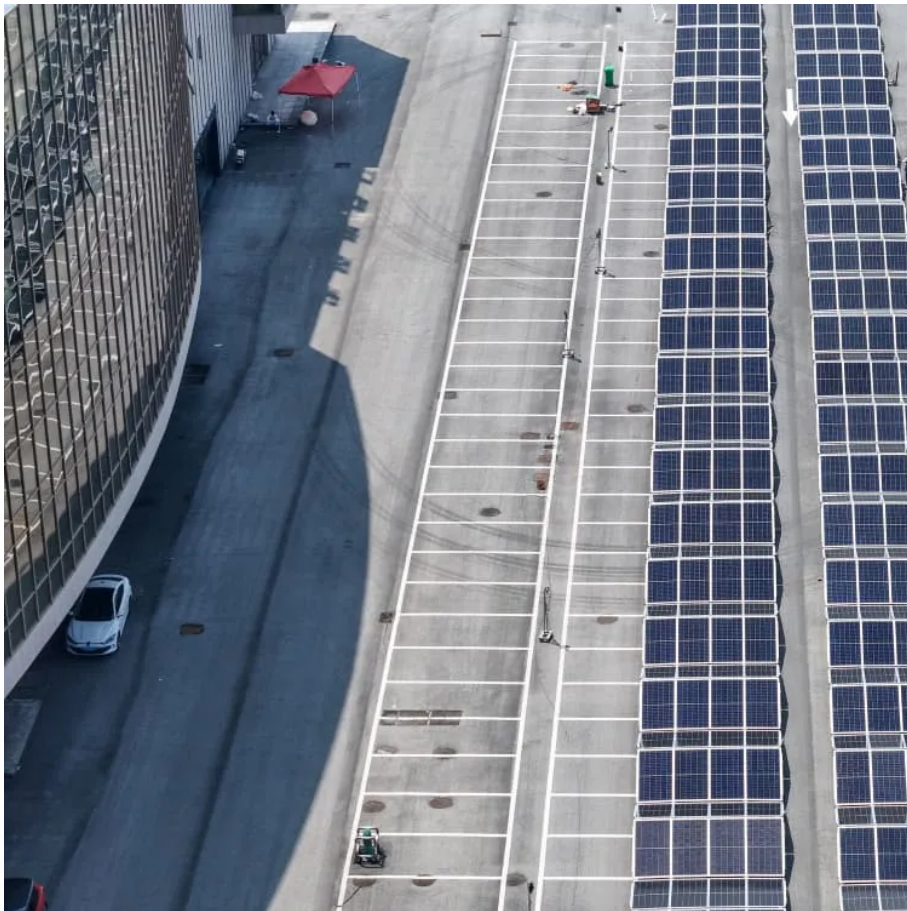


Can the inverter reach 220v





Overview

What is a 12V DC to 220V AC inverter?

Inverters (sometimes called power inverters) are just a class of electronic devices called power electronics that convert direct current into alternating current. Scientifically speaking, the transformer in an inverter must have a 1:19 turn ratio in order to convert 12V DC to 220V AC.

What are the different types of power inverters?

Most power inverters are designed to convert 12-volt, 24-volt, or 48-volt DC to 120-volt AC. These inverters are commonly used in recreation vehicles and solar power systems. Special inverters can be connected together to produce 220-volts. This process is called stacking.

How do I get 220V from a 110 volt inverter?

You would have to get a step-up transformer (perhaps auto-wound for lower costs) to get 220 from a 110 inverter. Re: 220v from two inverters?

Aloha, Can I parallel two of the same MSW inverters @ 110v each and get 220v single phase?

If so, then would I tie the two neutrals together?

Reference my system below. thanks.

Can a 12V battery run a 220V AC?

The result is that the 12V DC input becomes 220V AC output. PowMr Store's inverter converts DC power from a 12V battery system to AC power, which can power your home electrical equipment properly and can run a variety of 220V appliances such as refrigerators, air conditioners, and televisions, etc.



Can the inverter reach 220v



[Best 24V to 220V Power Inverters for Home, RV, and Solar ...](#)

Aug 15, 2025 · Choosing the right power inverter 24V to 220V is crucial for efficient energy conversion and reliable power supply in various settings such as homes, RVs, trucks, and off ...

[Buyer's Guide for 220 Volt Inverters , 220 Volt Appliances](#)

Buyer's Guide for 220 Volt Inverters Question1: What is a 220 volt power inverter? Answer 1: A 220 volt power inverter is a device that converts low-voltage DC (direct current) power to ...



[How to Calculate the Maximum Output Power of a Power Inverter](#)

For a 24V 100A battery with a 24V to 120V inverter, we can get 120V and 20A as the maximum power draw ($100A/5 = 20A$). $120V/24V = 5$, so the step up voltage is 5. For a 24V 100A battery ...

[220 Volt Inverter: The Ultimate Guide to Choosing the Right ...](#)

May 23, 2025 · A 220 volt inverter converts DC power from batteries into 220V AC power, allowing you to run appliances when traditional power sources are unavailable. How do I ...



[How to Link Two Inverters Together to Get 220V AC](#)

Dec 4, 2025 · Most power inverters are designed to convert 12-volt, 24-volt, or 48-volt DC to 120-volt AC. These inverters are commonly used in recreation vehicles and solar power systems.

...

[How does a 12V to 220V Inverter Work?](#)

Aug 7, 2024 · If we want to convert 12V DC to 220V AC, we often use the inverter composed of input interface voltage starting circuit, DC conversion circuit, feedback circuit, Ic oscillation

...



Contact Us

For catalog requests, pricing, or partnerships, please visit:
<https://woodgoods.pl>



Scan QR Code for More Information



<https://woodgoods.pl>