

Circuit breaker in substation in Cairo





Overview

What is a circuit breaker in a substation?

A circuit breaker in substation is a key component in electrical power systems, designed to interrupt the flow of electricity when a fault occurs, such as a short circuit or overload. Depending on system design, these devices can operate manually or automatically and come in various types, including air, vacuum, oil, and SF₆ gas.

How many 220 kV substations are there in Libya?

The project consists of seven 220 kV substations throughout Libya. PGESCo scope included design review, site supervision and project management of three (3) 220/400 kV substations. The scope also included material inspection.

What is the difference between OBC and SF6 arc Breakers?

Oil (OCB) use insulating oil to suppress arcs. They are more common in legacy systems and require ongoing maintenance due to oil degradation. SF₆: These breakers, employed in high-voltage substations, use sulphur hexafluoride gas for superior arc quenching and insulation.

What is a power interrupter?

It is a critical protective device that interrupts electrical current during fault conditions like short circuits or overloads. □ Automatically interrupts electrical current during faults to protect substation equipment like transformers and busbars.



Circuit breaker in substation in Cairo



[Circuit Breaker In Substation - Types, Protection And Safety](#)

Dec 5, 2024 · A circuit breaker in substation systems protects transformers and grid infrastructure by interrupting faults like overloads or short circuits. Learn how they work, their types, ...

[What is an AIS Substation? Components & Advantages , CHINT Egypt](#)

Apr 29, 2024 · CHINT's 126/145kV AIS Substation is a testament to the innovation and advancement in the field of power transmission equipment. It ...



[Different Types of Circuit Breakers in Substations](#)

Circuit Breaker in Substation A circuit breaker is a device that interrupts the flow of electricity in an electrical circuit. It is used to protect electrical equipment from damage caused by overloads or ...

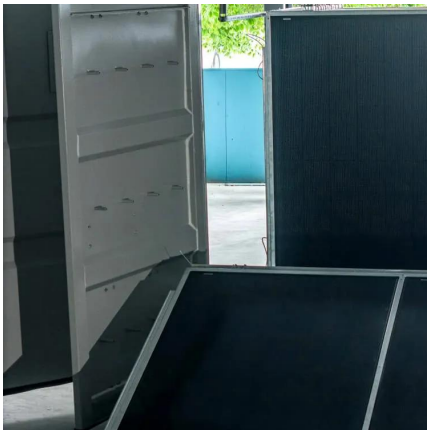
[Circuit Breakers and Substations 4th Year Elec. Power ...](#)

Apr 29, 2015 · 2. 1. 1. Air-break Circuit-breaker
The air at atmospheric pressure is used as an arc extinguishing medium in Air-Break Circuit-Breakers. This circuit breaker employs the high ...



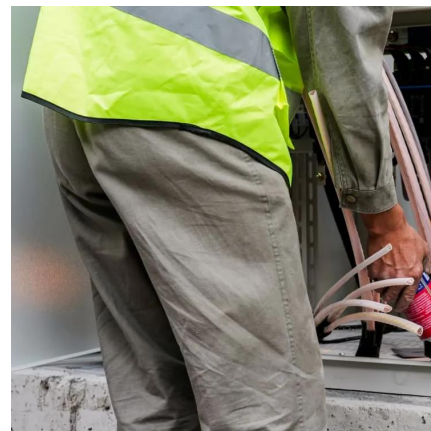
[Power Plant & Electrical Substation - powering](#)

Nov 22, 2015 · Power Plant & Electrical Substation Area of Expertise Cairo West 1x650 MW. Super-Critical Power Plant. Project: Cairo West Substation (500/220) KV. Location: Cairo. ...



[Substation Components--Part 3: Circuit Breakers](#)

Nov 6, 2025 · Substation Components--Part 3: Circuit Breakers This article explores the crucial role of circuit breakers in substations, covering their fundamental functions, interruption ...



Contact Us

For catalog requests, pricing, or partnerships, please visit:
<https://woodgoods.pl>



Scan QR Code for More Information



<https://woodgoods.pl>