

Circuit breaker in substation in Netherlands





Overview

What is a circuit breaker in a substation?

A circuit breaker in substation is a key component in electrical power systems, designed to interrupt the flow of electricity when a fault occurs, such as a short circuit or overload. Depending on system design, these devices can operate manually or automatically and come in various types, including air, vacuum, oil, and SF₆ gas.

Are there transmission substations in the Netherlands for HVDC lines?

Table 2 shows some recent transmission project substations in the Netherlands for HVDC lines. Table 2: Electrical projects in the Netherlands (Sources: Power Technology and Wikipedia) In the Dutch province of Flevoland (Netherlands), the 320-MW Zeewolde onshore wind farm has 91 wind turbines, each with a capacity of 3.5 MW.

How is electricity generated in the Netherlands in 2023?

Electricity generation in 2023 in the Netherlands was mainly sourced from natural gas, wind, solar photovoltaic, and other fossil sources such as coal, biofuels, and oil. On the transmission side, the highest voltage level increased over the years, from the 50-kV level toward a grid with connections at 110, 150, 220, and 380 kV.

How does a circuit breaker work?

Circuit breakers form part of a broader substation protection and control system that includes current transformers, voltage transformers, and digital protection relays. When a relay detects an abnormality, it sends a signal to the breaker to open, thereby isolating the faulty section.



Circuit breaker in substation in Netherlands



[Circuit Breaker In Substation - Types, Protection And Safety](#)

Dec 5, 2024 · A circuit breaker in substation systems protects transformers and grid infrastructure by interrupting faults like overloads or short circuits. Learn how they work, their types, ...

[Substation Components--Part 3: Circuit Breakers](#)

Nov 6, 2025 · Substation Components--Part 3: Circuit Breakers This article explores the crucial role of circuit breakers in substations, covering their fundamental functions, interruption ...



[Outdoor Circuit Breakers , Schneider Electric Netherlands](#)

Our outdoor circuit breakers are a reliable and cost-effective solution for your outdoor substation equipment. Their simple design offers reliable performance even in harsh ambient conditions.

High-Voltage Electrical Substations, Challenges in the Netherlands

May 7, 2025 · The Netherlands is working on new high-voltage direct-current (HVDC) projects, including high-voltage electrical substations. Transmission system operator TenneT is also ...

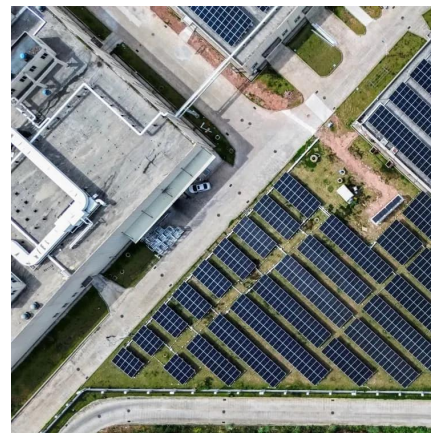


[How Circuit Breaker Works in Substation?](#)

Aug 14, 2024 · For example, consider a substation feeding power to an industrial area. If a short circuit occurs on one of the distribution lines due to a tree branch falling on the line, the circuit ...

[How does a safety circuit breaker work in a substation?](#)

Jul 3, 2025 · As a safety circuit breaker supplier, I often get asked about how these crucial devices work in a substation. In this blog post, I'll delve into the inner workings of safety circuit ...



[What is the role of circuit breakers in a substation?](#)

Aug 15, 2025 · Circuit breakers are essential components in a substation, performing critical functions such as protecting against overcurrents, isolating faulty sections, controlling ...





Contact Us

For catalog requests, pricing, or partnerships, please visit:
<https://woodgoods.pl>

Scan QR Code for More Information



<https://woodgoods.pl>