

Construction of base stations for telecommunication operators





Overview

What is a telecommunications system (radio base station)?

A telecommunications system (radio base station) may comprise an equipment room/shelter which is a structure for housing power supply and transmission equipment and/or antennae which are fixed to roof parapet of a building or attached to supporting frames projecting from the external wall of a building. 2.

What is base station operation?

These operators own many base stations, so Huawei provided the idea of "base station operation", aiming to help them rapidly build fixed networks through fixed-mobile synergy. The idea behind base station operation is to develop FBB around base stations. This construction mode can fully utilize mobile operators' large quantities of base stations.

What is a radio base station reconfiguration procedure?

This procedure outlines the application procedure to be followed by the mobile services operators (hereinafter called the "operators") for the reconfiguration of existing radio base stations NOT involving changes in the structural design and planning perspective of the parent building, and the change of land use.

What are the components of a base station?

The base station will have one or more RF antennas installed to transmit and receive RF signals from other devices. The block diagram of a base station typically includes the following key components: Baseband Processor: The baseband processor too deals with different communication protocols and interfaces with mobile network infrastructure.



Construction of base stations for telecommunication operators

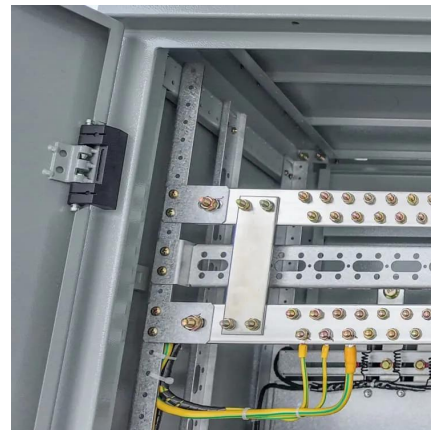


[Construction of mobile phone base stations . Mobile](#)

Sep 19, 2025 · We also install base station equipment in blind areas (underground restaurant malls, subway stations, road tunnels, etc.) with no mobile signal even after installation of an ...

[GUIDANCE NOTE FOR SUBMISSION OF APPLICATIONS BY](#)

Oct 21, 2020 · 3. For installation of new radio base stations and reconfiguration of existing radio base stations involving changes in the structural design and planning perspective of the parent ...



[Optimum sizing and configuration of electrical system for](#)

Jul 1, 2025 · With increasing market competition and declining revenues in mobile services, network operators are compelled to optimize the electrical system of telecommunication base ...



Base Station Operation Increases the Efficiency of Network Construction

These results indicate that base station operation can help operators efficiently build networks and effectively shorten the ROI period. Base Station



Operation Has a Bright Future According to ...



[Construction Procedures and Standards of Cellular ...](#)

Feb 15, 2019 · 3.5 The following goals and objectives shall be achieved through these Procedures and Standards in relation to the general construction principles to be applied to Cellular Mobile ...

[Design Considerations and Energy Management System for ...](#)

Jun 20, 2024 · This paper presents the design considerations and optimization of an energy management system (EMS) tailored for telecommunication base stations (BS) powered by ...



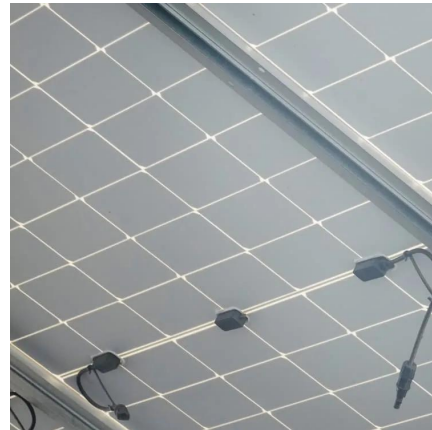
[Base Station Construction , KYOCERA Mirai Envision](#)

Nov 21, 2023 · Base station construction has been our specialty since our establishment. We offer a total solution with capabilities covering cell site lease negotiations, survey and design, and ...



[Complete Guide to 5G Base Station Construction Key Steps, ...](#)

Nov 17, 2024 · Explore how 5G base stations are built--from site planning and cabinet installation to power systems and cooling solutions. Learn the essential components, technologies, and ...



Contact Us

For catalog requests, pricing, or partnerships, please visit:
<https://woodgoods.pl>

Scan QR Code for More Information



<https://woodgoods.pl>