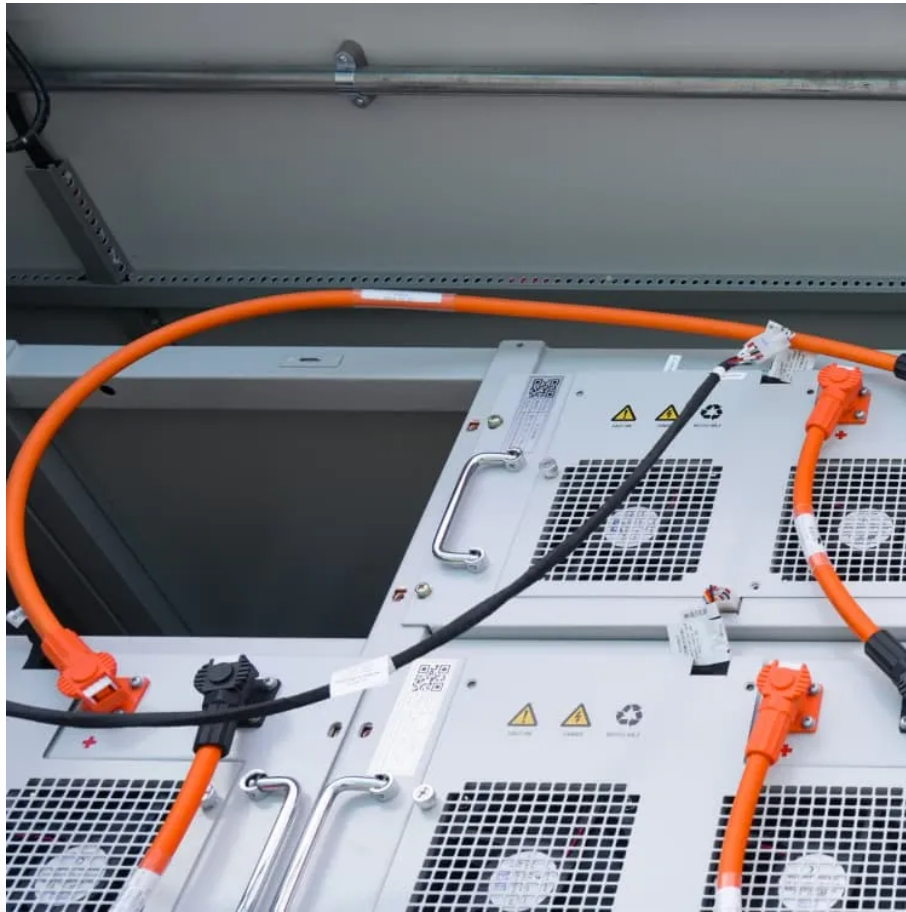


Conventional double-glass module size





Overview

Dual-glass type modules (also called double glass or glass-glass) are made up of two glass surfaces, on the front and on the rear with a thickness of 2.0 mm each. What is a double glass module?

In contrast, double glass modules replace the polymer layer with another glass sheet, creating a robust sandwich structure. At IBC SOLAR, we use 2,0 mm x 2,0 mm glass layers, whereas some other market offerings use thinner 1,6 mm x 1,6 mm layers. This ensures greater durability and longevity.

What is the thickness of a glass module?

The thickness of the front glass generally used for this type of structure is 3.2 mm. Dual-glass type modules (also called double glass or glass-glass) are made up of two glass surfaces, on the front and on the rear with a thickness of 2.0 mm each.

Why are double glass modules symmetrical?

Mechanical constraints on cells: the fact that the structure of the double glass modules is symmetrical implies that the cells are located on a so-called neutral line, the upper part of the module being in compression during a downward mechanical load and the lower glass surface being in tension.

Are double glass modules better than traditional modules?

Compared to traditional modules with backsheet, modules with double glass are stronger and more durable, presenting less degradation due to thermal cycling stress. Results from the thermal cycling test up to 400 cycles show about 35% to 43% less degradation with double-glass modules than with traditional modules with backsheet (Fig. 3).



Conventional double-glass module size

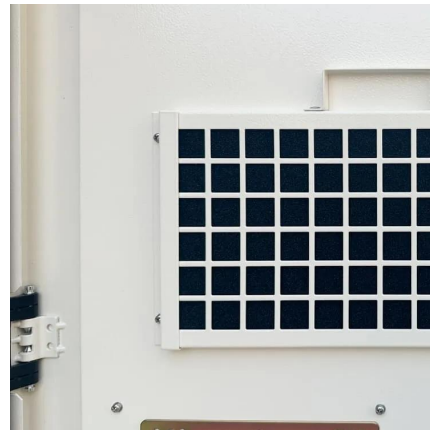


[What are the advantages of dual-glass Dualsun modules?](#)

Nov 26, 2025 · The thickness of the front glass generally used for this type of structure is 3.2 mm. Dual-glass type modules (also called double glass or glass-glass) are made up of two glass ...

[Double glass module specifications and dimensions](#)

Nov 5, 2025 · Why are double glass modules symmetrical? Mechanical constraints on cells: the fact that the structure of the double glass modules is symmetrical implies that the cells are ...



[All-black Double Glass Module to Grow at XX CAGR: Market Size ...](#)

Mar 25, 2025 · The all-black double glass module market is experiencing robust growth, driven by increasing demand for aesthetically pleasing and high-efficiency solar panels. The market, ...



[INSTRUCTIONS FOR PREPARATION OF PAPERS](#)

Nov 1, 2025 · The double glass module design offers not only much higher reliability and longer durability but also significant Balance of System cost savings by eliminating the aluminum ...



Is Frame a Must for Double-glass Panel? , Raytech Double Glass ...

Dec 24, 2020 · At present, clients with large size (72-layout) double glass modules are more willing to order products with aluminum frames, while not so many 60-layout product clients ...



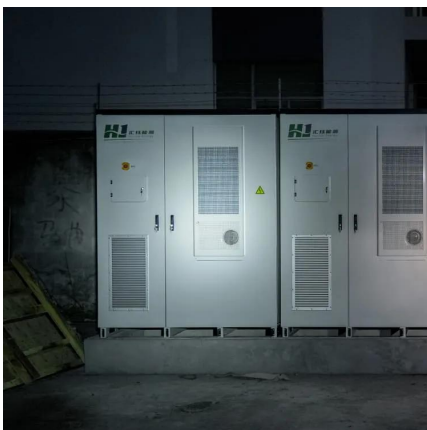
Double the strengths, double the benefits

Feb 21, 2025 · Superior protection; Environmental shielding: Double glass modules provide excellent defense against moisture, corrosion, and UV radiation, reducing the risk of potential ...



THE TRINA SOLAR VERTEX MODULE WHITE PAPER

May 28, 2020 · We take the shared-crossbeam support as an example (see Figure 11), which is a mainstream installation solution for bifacial double-glass modules to avoid backside shading. ...





[Mbb Bifacial Perc Half-cell Double Glass Module Market ...](#)

Apr 2, 2025 · The Mbb Bifacial Perc Half-cell Double Glass Module market is experiencing robust growth, driven by increasing demand for renewable energy and advancements in photovoltaic ...



Contact Us

For catalog requests, pricing, or partnerships, please visit:
<https://woodgoods.pl>

Scan QR Code for More Information



<https://woodgoods.pl>