

Cylindrical solar container lithium battery shape





Overview

What is a cylindrical lithium ion battery?

Cylindrical lithium-ion battery cells are a type of rechargeable battery commonly used in a wide range of electronic devices, electric vehicles, and energy storage systems. They are characterized by their cylindrical shape, standardized sizes, and high energy density, making them versatile and suitable for various applications.

What is a cylindrical battery?

Long-term research in high-performance electrode materials, explosion-proof batteries, and low-temperature batteries, with a solid scientific research background and rich practical experience. Cylindrical cells are a type of lithium-ion battery characterized by their cylindrical shape and robust metal casing.

What are the different shapes of lithium-ion batteries?

Pascalstrasse 8-9, 10587 Berlin, Germany Abstract Different shapes of lithium-ion batteries (LIB) are competing as energy storages for the automobile application. The shapes can be divided into cylindrical and prismatic, whereas the prismatic shape can be further divided in regard to the housing stability in Hard-Case and Pouch.

Are cylindrical batteries the future of energy?

By 2025, global demand for large cylindrical batteries is expected to reach up to 235 GWh, with major manufacturers like Tesla and Panasonic driving advancements. These developments promise higher energy density, faster charging, and reduced costs, solidifying cylindrical cells as a cornerstone of future energy solutions.



Cylindrical solar container lithium battery shape

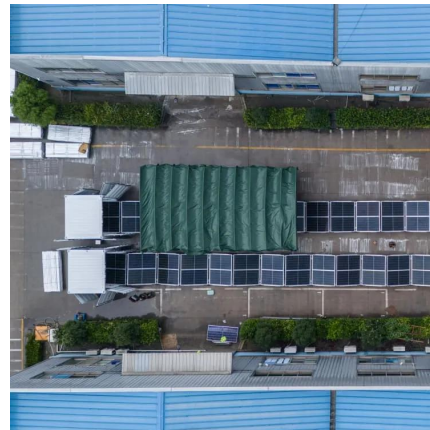


[Cylindrical Lithium Batteries Explained: Models, Materials, ...](#)

Nov 24, 2025 · Cylindrical lithium batteries are divided into different systems such as lithium iron phosphate, lithium cobalt oxide, lithium manganese oxide, cobalt-manganese hybrid, and ...

Comparatively Assessing different Shapes of Lithium-ion Battery ...

Jan 1, 2017 · Different shapes of lithium-ion batteries (LIB) are competing as energy storages for the automobile application. The shapes can be divided into cylindrical and prismatic, whereas ...



[A Comprehensive Guide to Cylindrical Lithium-Ion Cells](#)

Nov 14, 2025 · Cylindrical lithium-ion battery cells are a type of rechargeable battery commonly used in a wide range of electronic devices, electric vehicles, and energy storage systems. ...

[canrd: Square, Cylindrical, Soft Pack: Analysis of ...](#)

Jun 10, 2025 · In the new energy era, lithium batteries, as the core power and storage units, are of undeniable importance. Among the many characteristics of lithium batteries, the packaging ...



[Are All Lithium Batteries Cylindrical Exploring Shapes ...](#)

SunContainer Innovations - Meta Description: Discover why lithium batteries aren't just cylindrical! Explore different cell formats, industry applications, and why shape matters for EVs, solar ...



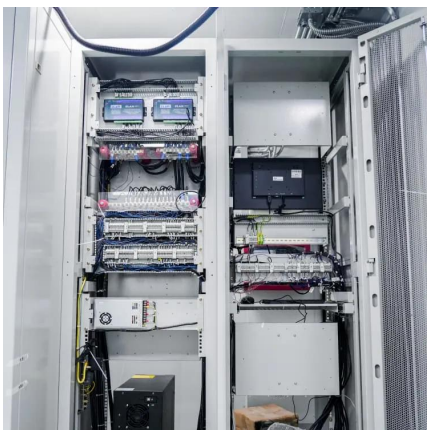
[Lithium Battery Cell Shapes and Battery Life Insights](#)

Sep 11, 2025 · Lithium battery cells come in three primary shapes: cylindrical, prismatic, and pouch (soft-pack). Each shape has unique characteristics that affect performance, safety, and ...



[The Complete Guide to Lithium Battery Enclosures: Cylindrical](#)

Jul 10, 2025 · Compare cylindrical, prismatic & pouch lithium batteries: performance, applications & market trends. Discover DLCPO's Brazil-optimized LFP solutions for energy storage projects.





Contact Us

For catalog requests, pricing, or partnerships, please visit:
<https://woodgoods.pl>

Scan QR Code for More Information



<https://woodgoods.pl>