

# Do I have to use an inverter when buying lithium batteries





## Overview

---

Should you use a lithium battery inverter?

Lithium batteries are more efficient than lead-acid, so you might opt for a slightly less powerful inverter to optimize efficiency. Low Battery Cutoff (LBC): These settings protect the battery from over-discharge and over-charging. Ensure the inverter's LBC is compatible with the recommended voltage limits of your lithium battery.

Does a lithium battery work with a solar inverter?

While lithium batteries can't work with every inverter, most modern solar and off-grid inverters now offer lithium compatibility. For optimal performance in home energy stems, choose an inverter specifically designed for lithium battery or LiFePO4 battery systems, and always verify compatibility before purchasing.

How to know if a lithium battery is compatible with an inverter?

As most of the inverters do not have any communication for the battery communication so these Inverters cant do any thing about the communication port of the Lithium battery. Here's how to find out for sure: Check the battery manual or manufacturer website: They'll recommend compatible inverter models and specifications.

How do I choose a good battery inverter?

Ideal Power Consumption: Look for an inverter with an efficiency rating that suits your needs. Lithium batteries are more efficient than lead-acid, so you might opt for a slightly less powerful inverter to optimize efficiency. Low Battery Cutoff (LBC): These settings protect the battery from over-discharge and over-charging.



## Do I have to use an inverter when buying lithium batteries

---



### Importance of Compatibility Between Inverter and Lithium ...

Among these innovations, lithium batteries have emerged as the preferred choice for backup power due to their efficiency, longevity, and compact design. However, one key ...

### How do I match a lithium solar battery with ...

Battery Type and Inverter Compatibility Lithium solar batteries, especially LiFePO4 batteries, have different charging and discharging characteristics compared to other battery types like lead - acid batteries. ...



### Understanding the Basics of Connecting ...

Lithium batteries are widely used in energy storage systems due to their high efficiency, long life cycle, and light weight. Connecting a lithium battery to an inverter is crucial for converting the stored DC (Direct ...

## Understanding the Basics of Connecting Lithium Batteries to Inverters

Lithium batteries are widely used in energy storage systems due to their high efficiency, long life cycle, and light weight. Connecting a lithium



battery to an inverter is crucial ...



### Importance of Compatibility Between Inverter ...

Among these innovations, lithium batteries have emerged as the preferred choice for backup power due to their efficiency, longevity, and compact design. However, one key factor that determines the overall ...

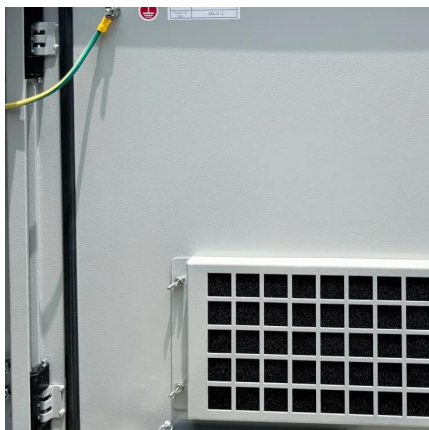
### How do I match a lithium solar battery with an inverter?

Battery Type and Inverter Compatibility Lithium solar batteries, especially LiFePO4 batteries, have different charging and discharging characteristics compared to other battery ...



### Can Lithium Batteries Work With Any Type of Inverter?

The Bottom Line While lithium batteries can't work with every inverter, most modern solar and off-grid inverters now offer lithium compatibility. For optimal performance in home ...





## Do you need a special inverter for lithium batteries?

Yes, lithium batteries require inverters specifically designed for their voltage profiles and BMS communication protocols. Standard inverters for lead-acid batteries lack voltage calibration for ...

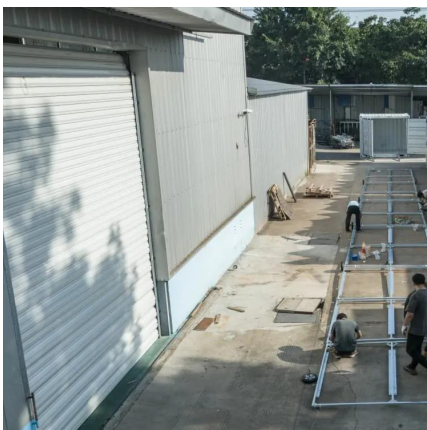
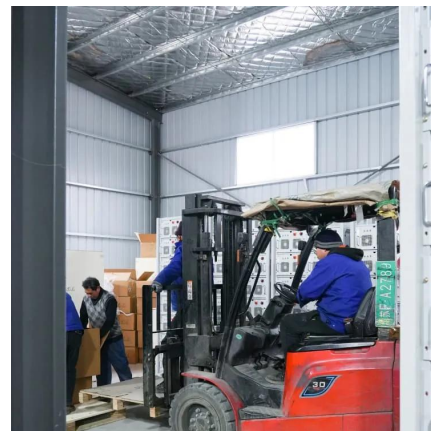


## Do I need a special inverter for Lithium battery?

The confusion likely arises because traditional lead-acid and lithium batteries have different characteristics. Here's a breakdown of the key points to consider when choosing the ...

## Do Lithium Batteries Need a Special Inverter?

Lithium batteries, particularly LiFePO4 batteries, do require a specific type of inverter to ensure optimal performance and safety. While standard inverters can work with lithium batteries, ...



## How to Choose the Right Inverter for Lithium Batteries?

Answer: To choose the right inverter for lithium batteries, match the inverter's voltage and capacity to your battery's specifications, prioritize pure sine wave inverters for ...



## Do Lithium Batteries Need a Special Inverter?

Lithium batteries, including lithium-ion batteries and lithium iron phosphate (LiFePO4) batteries, don't necessarily require a special inverter specifically designed for lithium batteries.

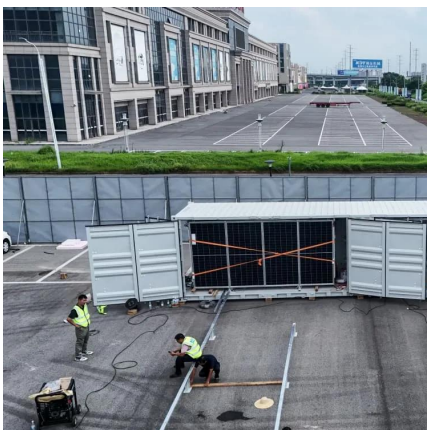


## Can Lithium Batteries Work With Any Type of ...

The Bottom Line While lithium batteries can't work with every inverter, most modern solar and off-grid inverters now offer lithium compatibility. For optimal performance in home energy stems, choose an ...

## How to Choose the Best Lithium Battery Inverter for Your ...

When choosing the best lithium battery inverter for off-grid solar systems or backup power, prioritize models with pure sine wave output, high conversion efficiency (over 90%), ...



## Do Lithium Batteries Need a Special Inverter?

Lithium batteries, including lithium-ion batteries and lithium iron phosphate (LiFePO4) batteries, don't necessarily require a special inverter specifically designed for ...



## Contact Us

---

For catalog requests, pricing, or partnerships, please visit:  
<https://woodgoods.pl>

### Scan QR Code for More Information



<https://woodgoods.pl>