

Do Libya s 5G base stations consume electricity





Overview

Does 5G increase energy consumption?

However, this technological leap comes with a substantial increase in energy consumption. Compared to its predecessor, the fourth-generation (4G) network, the energy consumption of the 5G network is approximately three times higher .

Should power consumption models be used in 5G networks?

This restricts the potential use of the power models, as their validity and accuracy remain unclear. Future work includes the further development of the power consumption models to form a unified evaluation framework that enables the quantification and optimization of energy consumption and energy efficiency of 5G networks.

How can we improve the energy efficiency of 5G networks?

To improve the energy efficiency of 5G networks, it is imperative to develop sophisticated models that accurately reflect the influence of base station (BS) attributes and operational conditions on energy usage.

Do base stations dominate the energy consumption of the radio access network?

Furthermore, the base stations dominate the energy consumption of the radio access network. Therefore, it is reasonable to focus on the power consumption of the base stations first, while other aspects such as virtualization of compute in the 5G core or the energy consumption of user equipment should be considered at a later stage.



Do Libya s 5G base stations consume electricity

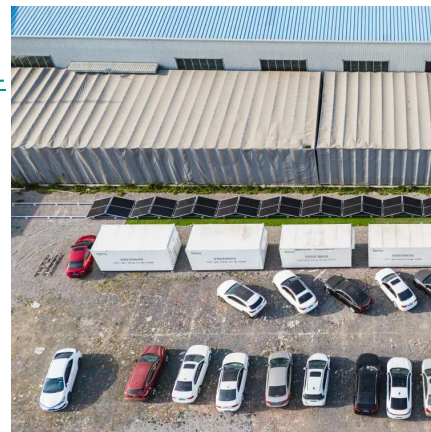


[Optimal energy-saving operation strategy of 5G base station ...](#)

Dec 1, 2025 · To further explore the energy-saving potential of 5 G base stations, this paper proposes an energy-saving operation model for 5 G base stations that incorporates ...

[Modelling the 5G Energy Consumption Using Real-world ...](#)

Sep 15, 2025 · Accurate energy consumption modeling is essential for developing energy-efficient strategies, enabling operators to optimize resource utilization while maintaining network ...



[Power consumption based on 5G communication](#)

Oct 17, 2021 · At present, 5G mobile traffic base stations in energy consumption accounted for 60% ~ 80%, compared with 4G energy consumption increased three times. In the future, high ...

[Establishing 5G Communications Networks in Libya](#)

Feb 4, 2025 · This research sheds light on 5G technology from multiple perspectives, including its properties, features, advantages, and disadvantages, as well as the necessary equipment for ...



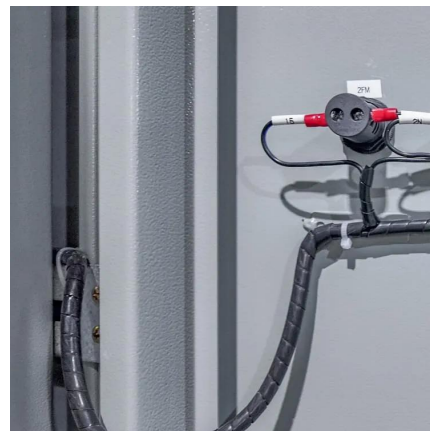
[Younis E. Abdalla, Int. J. Sci. R. Tech., 2024 1\(11\), 247-](#)

Nov 30, 2024 · The deployment of 5G infrastructure requires substantial investment in physical network components, including base stations, small cells, and fiber-optic backhaul.



[What is the Power Consumption of a 5G Base Station?](#)

Nov 15, 2024 · Compared to its predecessor, 4G, the energy demand from 5G base stations has massively grown owing to new technical requirements needed to support higher data rates ...



Comparison of Power Consumption Models for 5G Cellular Network Base

Jul 1, 2024 · This paper conducts a literature survey of relevant power consumption models for 5G cellular network base stations and provides a comparison of the models. It highlights ...





Contact Us

For catalog requests, pricing, or partnerships, please visit:
<https://woodgoods.pl>

Scan QR Code for More Information



<https://woodgoods.pl>