

# **Does the base station need a communication module**





## Overview

---

Why are base stations important?

Base stations are the backbone of wireless communication networks, playing a pivotal role in signal transmission, network reliability, and high-speed data connectivity. As technology evolves, the importance of base stations will continue to grow, addressing new challenges and supporting the ever-expanding demand for wireless communication services.

Why are base stations important in cellular communication?

Base stations are important in the cellular communication as it facilitate seamless communication between mobile devices and the network communication. The demand for efficient data transmission are increased as we are advancing towards new technologies such as 5G and other data intensive applications.

What is a base transceiver station?

A Base Transceiver Station comprises various components that work cohesively to establish and maintain communication with mobile devices. These components handle everything from signal processing and transmission to power management and network interfacing, ensuring seamless connectivity and optimal network performance.

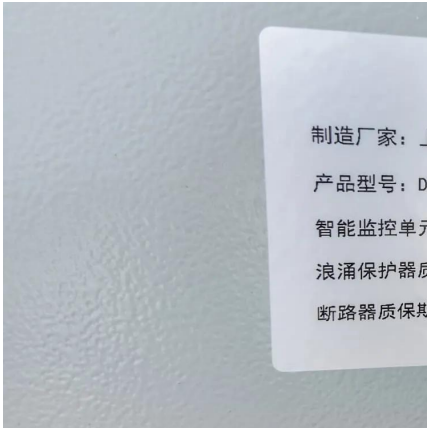
What is a communication base station?

In the vast telecommunications network, communication base stations play a frontline role. Positioned closest to end users, they serve as gateways for processing customer requests and managing data flow. In the words of "Interesting Communication Engineering Drawings," these stations act like "business trackers," always vigilant to:



## Does the base station need a communication module

---



### [5G Base Station RF Front End Module in the Real World: 5](#)

Oct 5, 2025 · The 5G Base Station RF Front End Module is a critical hardware component that handles the transmission and reception of radio signals between the network infrastructure ...

### [What Powers Base Station Connectivity? Are CPRI Modules ...](#)

Nov 10, 2025 · The answer determines whether you need a module optimized for short-reach multimode fiber or long-haul single-mode fiber. Telecomate offers a range of modules ...



### **Understanding Base Stations: The Backbone of Wireless Communication**

Jan 6, 2025 · Base Station But what exactly is a base station, and how does it work in wireless communication networks? This article explores the concept of base stations, their functions, ...



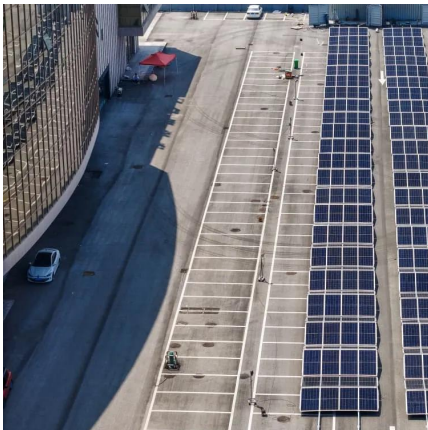
### [Communication Base Station Modular Design, Huijue Group ...](#)

Can traditional base station architectures keep pace with 5G's explosive growth? As global mobile data traffic surges 35% annually, operators face mounting pressure to upgrade infrastructure. ...



### [What Is the Role of a Base Station in Wireless Communication?](#)

Jun 27, 2025 · Base stations are the backbone of wireless communication networks, playing a pivotal role in signal transmission, network reliability, and high-speed data connectivity. As ...



### [What is a Base Station? -- From Communication Core to ...](#)

Aug 19, 2025 · Base stations are the core of mobile communication, and with the rise of 5G, thermal and energy challenges are increasing. This article explains the definition, structure, ...



### [Complete Guide to 5G Base Station Construction - Key Steps....](#)

Nov 17, 2024 · Explore how 5G base stations are built--from site planning and cabinet installation to power systems and cooling solutions. Learn the essential components, technologies, and ...





## Contact Us

---

For catalog requests, pricing, or partnerships, please visit:  
<https://woodgoods.pl>

### Scan QR Code for More Information



<https://woodgoods.pl>