

Double-glass bifacial components





Overview

What is the difference between bifacial and double glazed panels?

The double-glazed design gives them a transparent or translucent appearance, which is different from the opaque single-sided panels. Main difference: The design of single-sided panels is simpler and lighter, while bifacial double-glazed panels are heavier and have a more complex and modern appearance due to the double-glazed structure. 2.

How do solardeland bifacial double glass panels work?

This traditional design focuses only on capturing sunlight from the front. Solardeland bifacial double glass panels are designed to capture sunlight from both sides. They are enclosed between two layers of tempered glass, allowing the back to absorb reflected light from the surrounding surfaces.

What is the difference between bifacial panels and single sided panels?

Key differences: Single-sided panels will continue to dominate traditional installations, while bifacial panels are suitable for high-efficiency projects that require long-term durability. 4. Advantages and Disadvantages Lower cost. Lighter and easier to install. Effective in standard settings. Limited to one-way sunlight absorption.

What is a solardeland bifacial panel?

Monofacial panels, such as the Solardeland Mono 630W, have active cells on one side, while the back is covered with an opaque protective layer. This traditional design focuses only on capturing sunlight from the front. Solardeland bifacial double glass panels are designed to capture sunlight from both sides.



Double-glass bifacial components

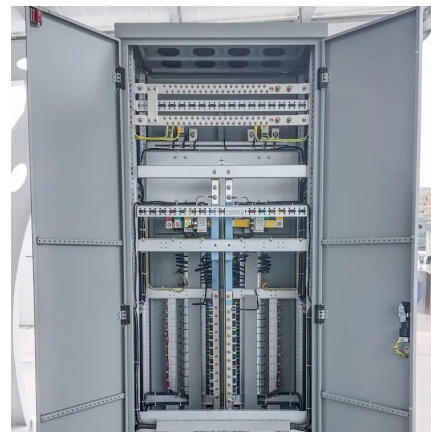


Advantages and Disadvantages of Monofacial vs. Bifacial Double Glass

Bifacial Double Glass Solar Panels Solardeland expects bifacial panels to be increasingly adopted in specialized projects where maximizing energy output is critical. Their ...

[Bifacial Solar Modules , Maysun Solar](#)

Bifacial photovoltaic modules are available in two types: single-glass bifacial modules and double-glass bifacial modules. Single-glass bifacial modules are lightweight and suitable for rooftop ...



The Difference Between Bifacial Module and Double Glass Bifacial ...

In summary, the primary difference between a bifacial module and a double glass bifacial module is the presence of glass on both sides in the latter, which provides improved ...

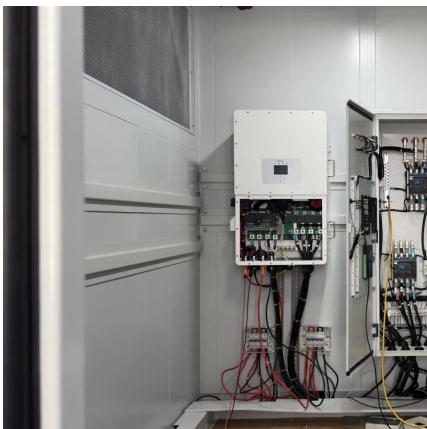
[Bifacial Solar Modules , Maysun Solar](#)

Bifacial photovoltaic modules are available in two types: single-glass bifacial modules and double-glass bifacial modules. Single-glass bifacial modules are lightweight and suitable for rooftop installations, while double-glass ...



Double-wave bifacial solar modules: Technological Evolution ...

The photovoltaic industry is undergoing an efficiency and reliability revolution led by double-wave bifacial solar modules (commonly known as bifacial double-glass modules). This ...



BIFACIAL SERIES - GLASS-TO-GLASS PHOTOVOLTAIC ...

ECONOMICS Bifacial G2G technology is a turning point in photovoltaic (PV) system technology. It replaces costly single-axis and double-axis mechanical tracking systems with ...



Advantages and Disadvantages of Monofacial ...

Bifacial Double Glass Solar Panels Solardeland expects bifacial panels to be increasingly adopted in specialized projects where maximizing energy output is critical. Their double-sided design and ...



[Bifacial single glass encapsulation of solar module - An ...](#)

To bifacial PV module, the backsheet is either glass or transparent polymeric materials. Many studies have shown that compared with double-glass solar modules, the ...



[How does the double-glass construction of bifacial panels ...](#)

The double-glass construction of bifacial solar panels significantly enhances their durability through several key factors: Resistance to Mechanical Loads: Double-glass panels ...

Contact Us

For catalog requests, pricing, or partnerships, please visit:
<https://woodgoods.pl>

Scan QR Code for More Information



<https://woodgoods.pl>