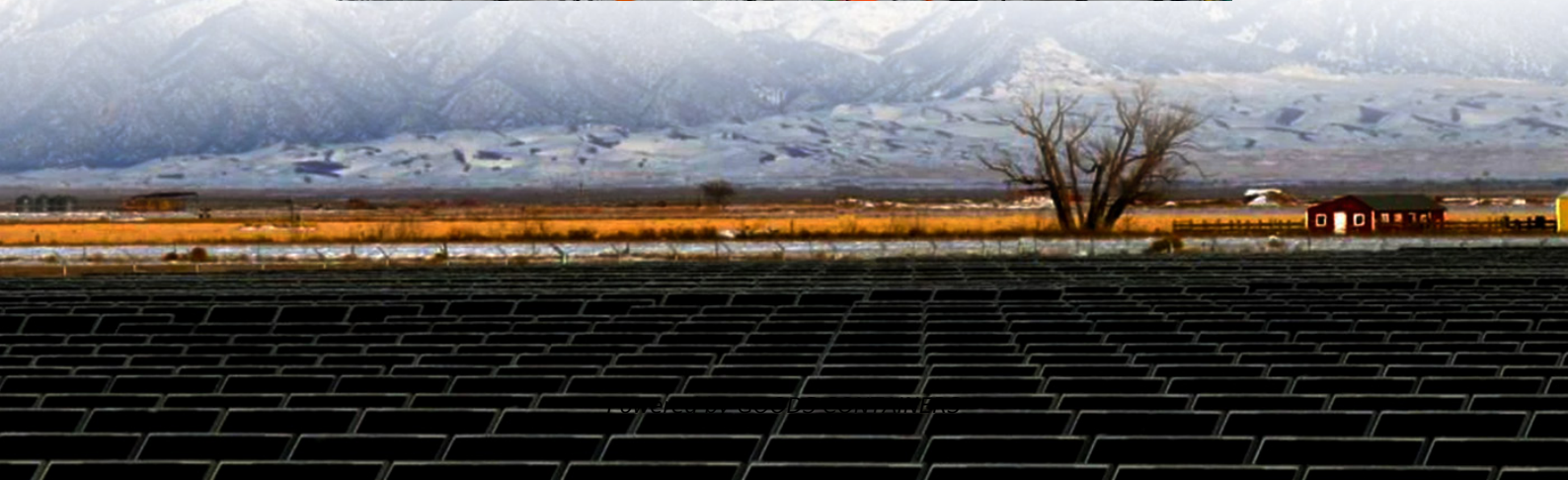


Electricity fee management for communication network base stations





Overview

Why do base stations waste so much energy?

When there is little or no communication activity, base stations typically consume more than 80% of their peak power consumption, leading to significant energy waste . This energy waste not only increases operational costs, but also burdens the environment, which is contrary to global sustainability goals .

What are the standardized energy-saving metrics for a base station?

(1) Energy-saving reward: after choosing a shallower sleep strategy for a base station, the system may save more energy if a deeper sleep mode can be chosen, and in this paper, the standardized energy-saving metrics are defined as (18) $R_{ie} = E_{SM=0} - E_{SM=i}$ $E_{SM=0} - E_{SM=1}$ $E_{SM=0} - E_{SM=2}$ $E_{SM=0} - E_{SM=3}$.

Can a base station sleep strategy reduce energy consumption in UDN systems?

The goal of this paper is to find a base station sleep strategy in UDN systems that reduces the total system energy consumption while being able to guarantee QoS.

How does distributed execution affect base station control?

In the distributed execution phase, each actor network makes decisions independently based only on its own network and observations, and although each actor executes independently, the whole system is able to obtain a better base station control strategy because their strategies are based on the results of global optimization. Fig. 2.



Electricity fee management for communication network base station



Energy-Efficient Base Station Deployment in Heterogeneous Communication

Aug 23, 2019 · With the advent of the 5G era, mobile users have higher requirements for network performance, and the expansion of network coverage has become an inevitable trend. ...

[Energy-efficiency schemes for base stations in 5G ...](#)

In today's 5G era, the energy efficiency (EE) of cellular base stations is crucial for sustainable communication. Recognizing this, Mobile Network Operators are actively prioritizing EE for ...



[Optimal configuration of 5G base station energy storage ...](#)

Feb 1, 2022 · The high-energy consumption and high construction density of 5G base stations have greatly increased the demand for backup energy storage batteries. To maximize overall ...

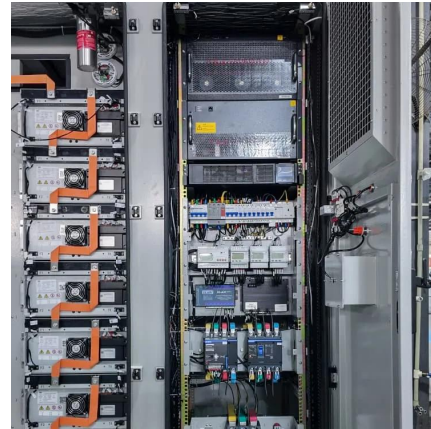


Energy-saving control strategy for ultra-dense network base stations

Aug 1, 2025 · Threshold-based base station sleep strategy is a common base station management method in wireless communication networks,

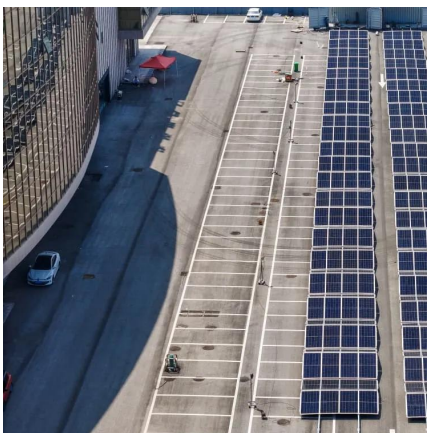


which adjusts the operating state ...



[An Overview of Energy-efficient Base Station ...](#)

Sep 5, 2022 · Since most of the energy consumed in cellular networks is used by base stations (BSs), algorithms for managing BSs seem to be the most urgent development to achieve ...



5G and energy internet planning for power and communication network

Mar 15, 2024 · Our study introduces a communications and power coordination planning (CPCP) model that encompasses both distributed energy resources and base stations to improve ...



[Base station power control strategy in ultra-dense networks ...](#)

Aug 1, 2025 · However, the deployment of numerous small cells results in a linear increase in energy consumption in wireless communication systems. To enhance system efficiency and ...





[\(PDF\) INVESTIGATORY ANALYSIS OF ENERGY REQUIREMENT...](#)

Mar 27, 2025 · Abstract Energy consumption in mobile communication base stations (BTS) significantly impacts operational costs and the environmental footprint of mobile networks.



Optimization Control Strategy for Base Stations Based on Communication

Mar 31, 2024 · On the basis of ensuring smooth user communication and normal operation of base stations, it realizes orderly regulation of energy storage for large-scale base stations, ...



Contact Us

For catalog requests, pricing, or partnerships, please visit:
<https://woodgoods.pl>

Scan QR Code for More Information



<https://woodgoods.pl>