

# Energy storage mode of large energy storage power station





## Overview

---

The high proportion of renewable energy access and randomness of load side has resulted in several operational challenges for conventional power systems. Firstly, this paper proposes the concept of a flexi.

How do energy storage devices affect power balance and grid reliability?

It is crucial to integrate energy storage devices within wind power and photovoltaic (PV) stations to effectively manage the impact of large-scale renewable energy generation on power balance and grid reliability. However, existing studies have not modelled the complex coupling between different types of power sources within a station.

What time does the energy storage power station operate?

During the three time periods of 03:00–08:00, 15:00–17:00, and 21:00–24:00, the loads are supplied by the renewable energy, and the excess renewable energy is stored in the FESPS or/and transferred to the other buses. Table 1. Energy storage power station.

Should energy storage power stations be scaled?

In addition, by leveraging the scaling benefits of power stations, the investment cost per unit of energy storage can be reduced to a value lower than that of the user's investment for the distributed energy storage system, thereby reducing the total construction cost of energy storage power stations and shortening the investment payback period.

Which energy storage options should be used in future grid codes?

While flow batteries could be an alternative option, Lithium-Ion or flywheel energy storage could also be used, specially in those particular cases where very high power is required (e.g. very large photovoltaic power plants). Black start is also one of the candidates to be required in the future grid codes.



## Energy storage mode of large energy storage power station

---



### **Pumped-storage renovation for grid-scale, long-duration energy storage**

Jan 20, 2025 · This Comment explores the potential of using existing large-scale hydropower systems for long-duration and seasonal energy storage, highlighting technological challenges ...

### **Flexible energy storage power station with dual functions of power ...**

Nov 1, 2022 · The high proportion of renewable energy access and randomness of load side has resulted in several operational challenges for conventional power systems. Firstly, this paper ...

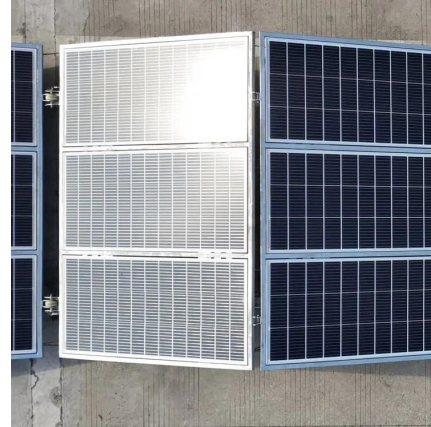


### **Energy Storage Capacity Allocation for Power Systems with Large ...**

Aug 11, 2024 · Under the background of "dual-carbon" strategy, China is actively constructing a new type of power system mainly based on renewable energy, and large-scale energy storage ...

### [A Simple Guide to Energy Storage Power Station Operation ...](#)

Sep 3, 2024 · Exencell, as a leader in the high-end energy storage battery market, has always been committed to providing clean and green energy to our global partners, continuously ...



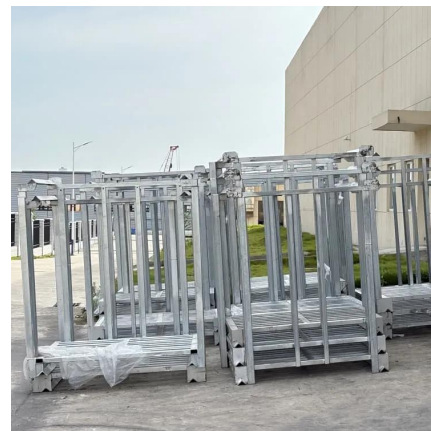
### Operation Strategy Optimization of Energy Storage Power Station ...

Nov 1, 2020 · In the multi-station integration scenario, energy storage power stations need to be used efficiently to improve the economics of the project. In this paper, the life model of the ...



### [China's Largest Grid-Forming Energy Storage Station ...](#)

Apr 9, 2024 · The station was built in two phases; the first phase, a 100 MW/200 MWh energy storage station, was constructed with a grid-following design and was fully operational in June ...



### Configuration and operation model for integrated energy power station

Jun 29, 2024 · This article first analyses the costs and benefits of integrated wind-PV-storage power stations. Considering the lifespan loss of energy storage, a two-stage model for the ...





[Energy Storage Configuration and Benefit Evaluation ...](#)

Dec 11, 2024 · This paper proposes a benefit evaluation method for self-built, leased, and shared energy storage modes in renewable energy power plants. First, energy storage configuration ...



**A review of energy storage technologies for large scale photovoltaic**

Sep 15, 2020 · Then, it reviews the grid services large scale photovoltaic power plants must or can provide together with the energy storage requirements. With this information, together with ...

[Technologies for Energy Storage Power Stations Safety ...](#)

Feb 26, 2024 · As large-scale lithium-ion battery energy storage power facilities are built, the issues of safety operations become more complex. The existing difficulties revolve around ...



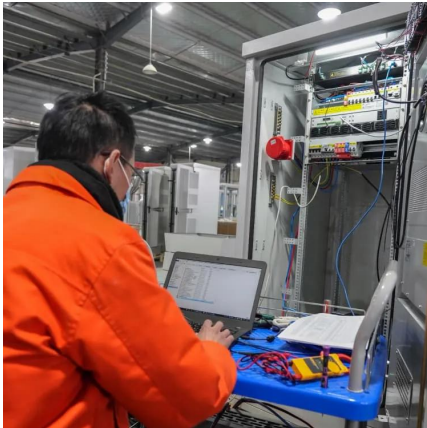
[Current situation of small and medium-sized pumped storage power](#)

Feb 1, 2024 · Therefore, this paper analyzes the construction of small and medium-sized pumped storage power stations in Zhejiang from the aspects of construction background, technology ...



### [Operation strategy and capacity configuration of digital ...](#)

Aug 15, 2024 · The rapid development of renewable energy sources, represented by photovoltaic generation, provides a solution to environmental issues. However, the intermittency of ...



### [Optimal Configuration of Wind-PV and Energy Storage in Large ...](#)

Aug 25, 2023 · The installed capacity of energy storage in China has increased dramatically due to the national power system reform and the integration of large scale renewable energy with ...

### [What is a large energy storage power station?., NenPower](#)

May 10, 2024 · A large energy storage power station is a facility designed to store significant quantities of energy for later use, enhancing the reliability, resilience, and efficiency of modern ...



## Contact Us

For catalog requests, pricing, or partnerships, please visit:  
<https://woodgoods.pl>



## Scan QR Code for More Information



<https://woodgoods.pl>