

# **Finite element analysis of energy storage container structure**





## Finite element analysis of energy storage container structure

---



### Verbal Phrase / Non Finite Verb

"Non-finite" refers to those forms of a verb which don't show person number or tense: the infinitive and the ING-form. All verbs, whether dynamic, stative or copulative, have ...

### Rather than + infinitive/gerund

In You should weigh up the pros and cons rather than deciding now, the contrast is of two non-finite verbs (an infinitive and an -ing verb). But I have to tell you, this doesn't sound ...



### Noun clause in apposition and adjective clause

Appositive/apposition clause means a finite or non-finite clause that modifies a noun, where the clause and the noun have the same referent. This is an example of apposition ...



### Despite followed by gerund

Non-finite take as subject object pronouns ("it") or possessive pronouns ("its"). As I said earlier, subjects of non-finite verbs are commonly dropped because they are ...



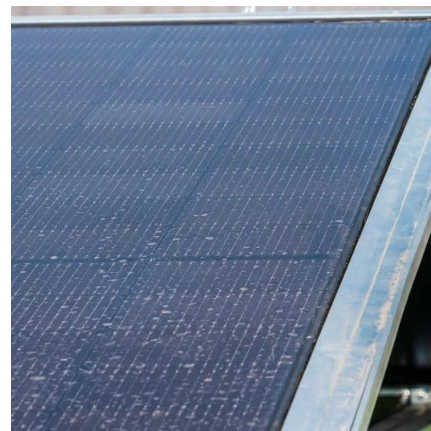
[They didn't hold hands , WordReference Forums](#)

Is the following a nonfinite or finite verb? The definition of a nonfinite verb: "[a verb that] does not show a distinction in number, person or tense. The following verb is in the past ...



["Not having read" vs "Having not read" , WordReference ...](#)

In a non-finite clause (such as your example headed by "having"), you can place "not" before the clause (not having read the book) or after the auxiliary verb "having" (having ...



[Can preposition be followed by a clause?](#)

Can Preposition be followed by a finite clause? If can, what is the difference between the structure and the so-called absolute construction? E.g. "When guidance seems ...





## Contact Us

---

For catalog requests, pricing, or partnerships, please visit:  
<https://woodgoods.pl>

### Scan QR Code for More Information



<https://woodgoods.pl>