

# House solar panel size standards





## Overview

---

What are the dimensions of standard solar panels?

Most solar panels are about 1.5 inches thick. The typical classification of solar panel sizes is based on the solar cell size, but it's not very useful for most calculations.

How big should a commercial solar panel be?

For commercial solar panel installations, panels often range from 400W to 600W, with dimensions of approximately 195 x 99 x 3.81 cm (6.40 x 3.25 x 0.13 feet). Several factors affect the size of a solar panel, including the type of solar cells used, the desired wattage output, your property's size and the panel's overall efficiency.

How big are residential solar panels?

Today's residential solar panels come in remarkably consistent sizes, making it easier for homeowners to plan their solar installations. A typical residential solar panel measures about 65 inches by 39 inches (roughly 5.4 feet by 3.25 feet), though slight variations exist between manufacturers.

What are the dimensions of a 96-cell solar panel?

96-cell solar panel size. The dimensions of 96-cell solar panels are 41.5 inches long and 63 inches wide. That's a 41.5x63 solar panel.



## House solar panel size standards

---

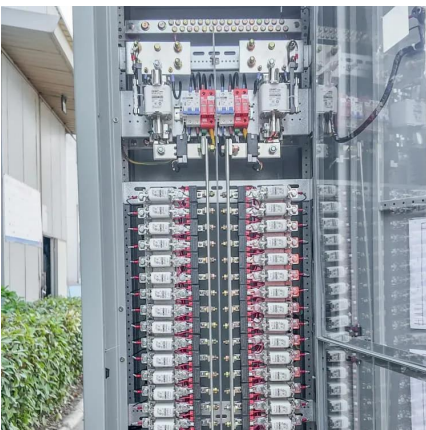
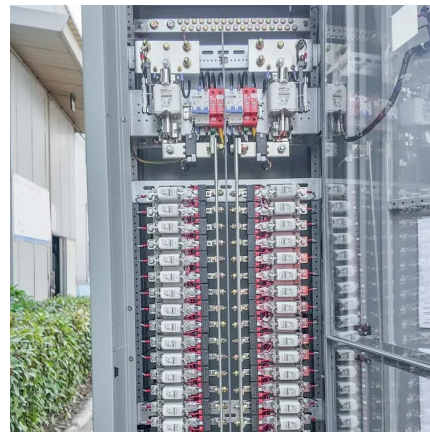


### [What Are the Common Solar Panel Sizes?](#)

The size of solar panels with the same cell count varies slightly, depending on the brand and model. Still, most 60-cell solar panels have a size of 39" X 66" and most 72-cell ...

### [Solar Panel Size & Dimensions Guide 2025](#)

Solar Panel Size Fundamentals When discussing solar panels, the term "size" can be confusing because it refers to electrical capacity rather than physical dimensions. Solar panel size is measured in watts (W) and ...



### [Solar Panel Size & Dimensions Guide 2025 , Complete Specs](#)

Solar Panel Size Fundamentals When discussing solar panels, the term "size" can be confusing because it refers to electrical capacity rather than physical dimensions. Solar ...

### [Guide to Solar Panel Sizes & Dimensions \(October 2025\)](#)

Solar panel size refers to the total amount of power a solar panel can generate over a period



of time Solar panel dimensions refers to the physical size of a solar panel Solar ...



### [The Ultimate Solar Panel Size Guide for Every Homeowner](#)

When referring to a "standard" solar panel size, it generally pertains to the most commonly used configurations in the solar industry. Solar cells are arranged in grid formations, ...



### [Perfect Solar Panel Sizes for Your Home \(Expert Sizing Guide\)](#)

Solar panels have become the cornerstone of residential clean energy, with standard sizes designed to balance power output and installation practicality. Most residential ...



### [Standard Solar Panel Sizes And Wattages \(100W-500W ...\)](#)

72-cell solar panel size. The dimensions of 72-cell solar panels are as follows: 77 inches long, and 39 inches wide. That's a 77x39 solar panel; basically, a longer panel, mostly ...





## Standard Solar Panel Sizes And Wattages

...

72-cell solar panel size. The dimensions of 72-cell solar panels are as follows: 77 inches long, and 39 inches wide. That's a 77×39 solar panel; basically, a longer panel, mostly used for commercial solar ...

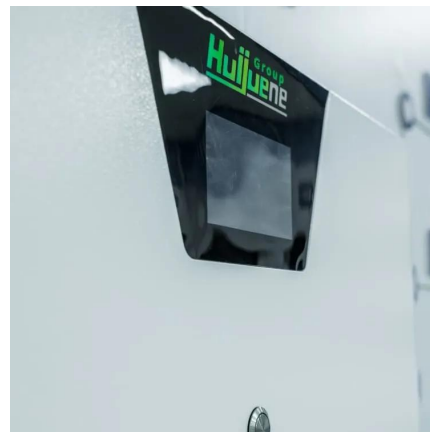


## What are the Standard Sizes and ...

The most common residential panels today are based on the 60-cell and 66-cell format, with a strong trend towards larger 72-cell panels for more power-dense installations. Typically, you can expect the length of a standard 60 ...

## How Big Is A Solar Panel For A House?

Selecting the right size and dimensions for solar panels is crucial for maximizing efficiency and ensuring a successful installation. This blog covers standard solar panel sizes for residential and commercial ...



## How Big Is A Solar Panel For A House?

Selecting the right size and dimensions for solar panels is crucial for maximizing efficiency and ensuring a successful installation. This blog covers standard solar panel sizes ...



## What are the Standard Sizes and Specifications for Residential Solar Panels

The most common residential panels today are based on the 60-cell and 66-cell format, with a strong trend towards larger 72-cell panels for more power-dense installations. Typically, you ...



## Contact Us

For catalog requests, pricing, or partnerships, please visit:  
<https://woodgoods.pl>

**Scan QR Code for More Information**



<https://woodgoods.pl>