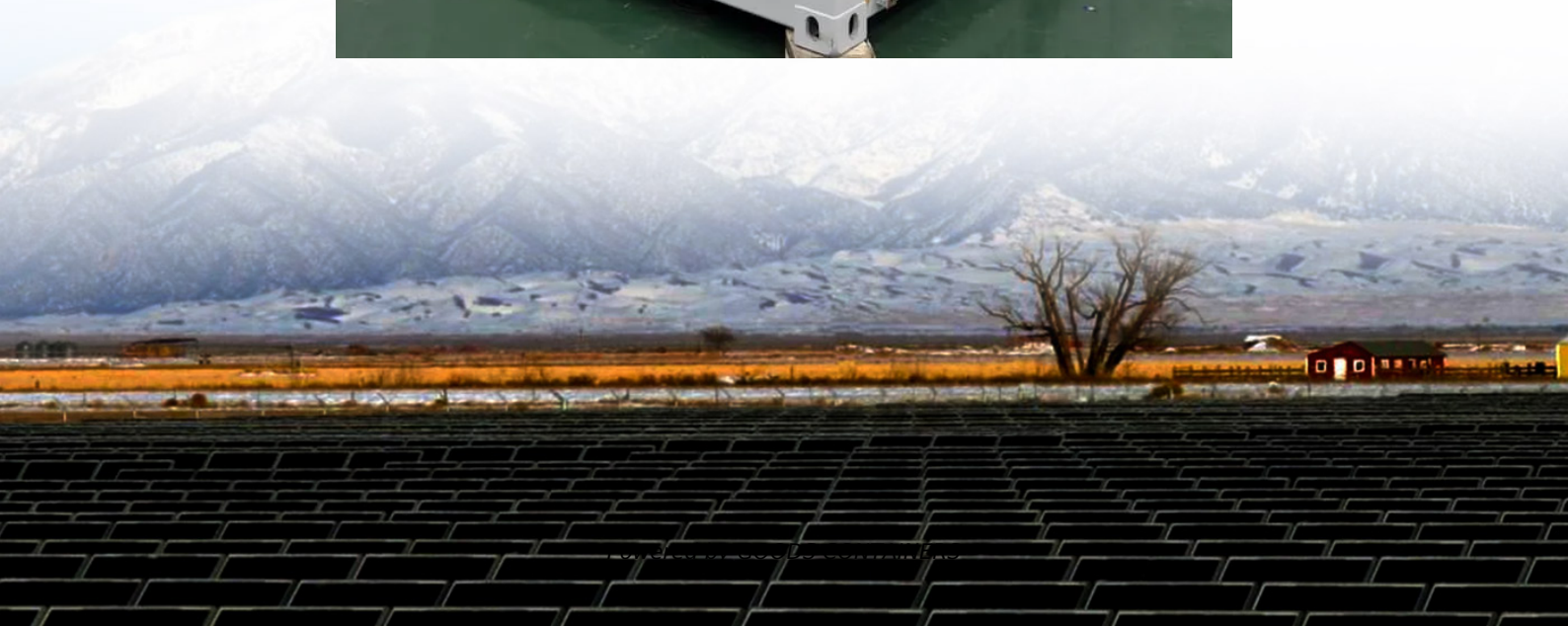


How big a solar panel should I use for a 55A solar inverter





Overview

How big should a solar inverter be?

To account for power losses assume an 80 percent efficiency. Your solar inverter should have a similar or slightly higher wattage rating than the DC output of your solar panels (which in this case is 4.5 kW). You can size it between 1.15 and 1.5 times larger. The rule of thumb is to size your inverter 1.25 bigger than your solar array.

How do I choose a solar inverter?

Knowing your array size allows you to choose an inverter that can handle that production efficiently—without over- or under-investing in capacity. The second step is understanding your system's DC-to-AC ratio, one of the most important metrics when sizing a solar inverter.

How many Watts should a solar panel inverter have?

For example, if your total solar panel wattage is 5,000 watts, you would ideally choose an inverter with a continuous power rating of around 5,000 watts and a peak power rating of at least 6,000 watts (5,000 watts + 20% buffer). How to Calculate Your Solar Panel Size?

.

Why is the size of a solar inverter important?

The size of a solar inverter is crucial because it determines how much energy can flow to your home and battery at any given time. More specifically, the inverter ensures that enough energy can flow from your solar panels to the grid and load or if installed with a battery, from and to the battery.



How big a solar panel should I use for a 55A solar inverter



[Solar Panel Inverter Size Calculator](#)

Jul 14, 2024 · Safety and Code Compliance for Inverter Installation When figuring out how do i know what size solar inverter i need? or can you run an inverter directly off a solar panel?, ...

[How to Calculate Solar Panel and Battery Size for Your ...](#)

Nov 10, 2024 · Unlock the secrets to effectively calculating solar panel and battery sizes with our comprehensive guide. This article demystifies the technical aspects, offering step-by-step ...



[How to Calculate Solar Panel, Battery, and Inverter Size](#)

Jun 3, 2024 · Calculate How Much Power You Will Need Before sizing your solar panel system components, it's essential to understand your energy needs. This will help you determine the ...

[What Size Solar Inverter Do I Need? Experts Break It Down](#)

Jul 18, 2025 · What Size Solar Inverter Do I Need? A solar inverter should closely match your solar system's output in kW--typically within 80% to



120% of your total panel capacity. Key ...

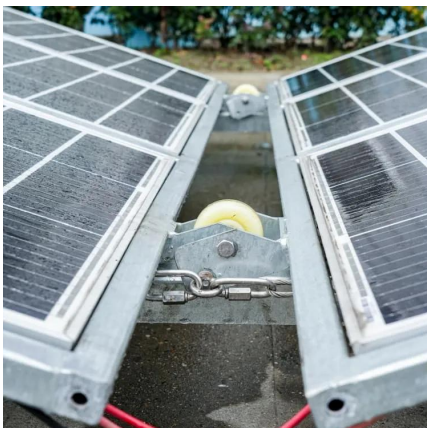


[How to Choose the Right Size Solar Inverter: Step-by-Step ...](#)

Jul 15, 2025 · Wondering what size solar inverter do I need for your solar system? This guide walks you through calculating inverter size based on panel capacity, power usage, and safety ...

[Solar inverter size: Calculate the right size for your inverter](#)

3 days ago · Discover why solar inverter sizing is important for efficiency and performance. Learn how to calculate the ideal inverter size for your solar panels, battery, and household energy ...



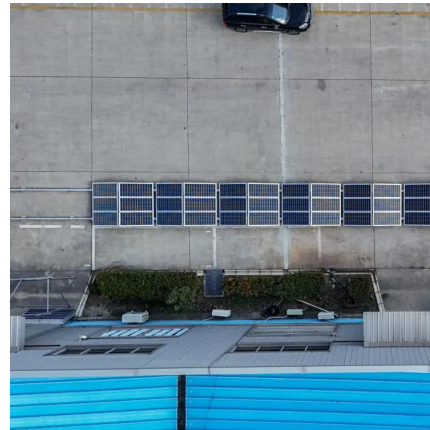
[Solar Inverter Sizing Guide for Maximum Efficiency , Mingch](#)

Jun 27, 2025 · When choosing a solar inverter, size matters more than you might think. The right solar inverter sizing helps ensure your system performs efficiently, qualifies for incentives, and ...



[Solar System Size Calculator: Estimate Panels, Inverter, and...](#)

Aug 8, 2025 · Calculate solar system size for your home or business. Learn to estimate solar panel, inverter, and battery storage needs, and predict annual solar output for energy ...



Contact Us

For catalog requests, pricing, or partnerships, please visit:
<https://woodgoods.pl>

Scan QR Code for More Information



<https://woodgoods.pl>