

How big an inverter does a 2200w battery need to charge





Overview

What is the recommended battery size for an inverter?

Interpreting Results: Once you input the required data, the calculator will generate the recommended battery size in ampere-hours (Ah). For instance, if your power consumption is 500 watts, the usage time is 4 hours, and the inverter efficiency is 90%, the calculator might suggest a battery size of approximately 222 Ah.

What wattage Inverter should I use?

Match the inverter's continuous wattage rating to the battery's discharge capacity. For a 12V 200Ah battery (2.4kWh), a 2000W inverter is ideal. Formula: $\text{Inverter Wattage} \leq (\text{Battery Voltage} \times \text{Ah Rating} \times 0.8)$. Factor in surge power needs but prioritize sustained loads.

What size inverter for a 12V 200Ah battery?

For a 12V 200Ah battery (2.4kWh), a 2000W inverter is ideal. Formula: $\text{Inverter Wattage} \leq (\text{Battery Voltage} \times \text{Ah Rating} \times 0.8)$. Factor in surge power needs but prioritize sustained loads. Always check the battery's max discharge rate (C-rate) to avoid exceeding safe limits. When sizing for 24V or 48V systems, recalculate using the higher voltage.

Can a lithium ion battery power a 1200W inverter?

Lithium-ion batteries tolerate higher discharge rates (up to 1C) compared to lead-acid (0.5C). A 100Ah LiFePO4 battery can safely power a 1200W inverter, while lead-acid should cap at 600W. Gel and AGM batteries have intermediate tolerances. Mismatching chemistry and inverter size accelerates degradation and voids warranties.



How big an inverter does a 2200w battery need to charge



[Calculate Battery Size For Any Size Inverter \(Using Our ...](#)

Inverter Battery Size Calculator
How to Calculate Battery Capacity For Inverter
How Many Batteries For 3000-Watt Inverter
Battery Size Chart For Inverter
Battery to Inverter Wire Size Chart
To calculate the battery capacity for your inverter use this formula
$$\text{Inverter capacity (W)} \times \text{Runtime (hrs)} / \text{solar system voltage} = \text{Battery Size} \times 1.15$$

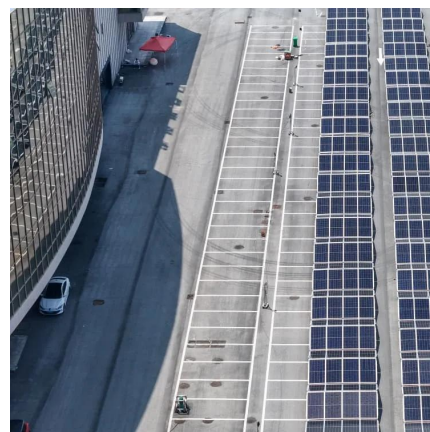
Multiply the result by 2 for lead-acid type battery, for lithium battery type it would stay the same
Example Let's suppose you have a 3000-watt inverter with an 85% efficiency rate and your daily runtime
See more on dotwatts Climatebiz

The Only Inverter Size Chart You'll Ever Need - Climatebiz

Sep 25, 2023 · We created a comprehensive inverter size chart to help you select the correct inverter to power your appliances. The need for an inverter size chart first became apparent ...

[Calculate Battery Size for Inverter Calculator](#)

Mar 14, 2025 · The Calculate Battery Size for Inverter Calculator helps you determine the optimal battery capacity needed to support your inverter system. By inputting critical parameters such ...



[Can an Inverter Be Too Big for Your Battery System?](#)

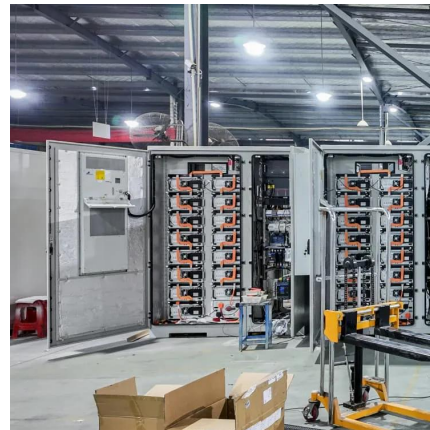
How to Calculate the Right Inverter Size for Your



Battery Match the inverter's continuous wattage rating to the battery's discharge capacity. For a 12V 200Ah battery (2.4kWh), a 2000W inverter ...

Determining the Solar and Inverter Size Needed to Charge a Battery

29 Jul 2025 0 Comments When planning an off-grid or backup power system, one of the first questions people ask is: How do I determine the right Size of solar and inverter system ...



[Solar Inverter & Battery Sizing Calculator](#)

Apr 30, 2025 · Choosing the correct inverter and battery size is crucial for every microgrid system. Our Solar Inverter and Battery Sizing Calculator provides a simple and user-friendly solution.

[The Only Inverter Size Chart You'll Ever Need](#)

Sep 25, 2023 · We created a comprehensive inverter size chart to help you select the correct inverter to power your appliances. The need for an inverter size chart first became apparent ...





[What Size Inverter Do I Need ?A Complete Guide to ...](#)

Jun 12, 2025 · Discover how to select the perfect inverter size for your solar or backup power system. Learn to calculate power requirements, account for surge loads, match battery ...

[Calculate Battery Size For Any Size Inverter \(Using Our ...](#)

Mar 3, 2023 · To recharge your battery from time to time you would need the right size solar panel to do the job! Read the below article to find out the suitable solar panel size for your battery ...



[How to Size a Home Power Inverter for Your Needs: A Step ...](#)

Sep 13, 2024 · Provide detailed instructions on how to calculate the appropriate size of a power inverter based on household power requirements. Include formulas, examples, and ...



Contact Us

For catalog requests, pricing, or partnerships, please visit:
<https://woodgoods.pl>



Scan QR Code for More Information



<https://woodgoods.pl>