

How big is a solar panel for a tile house





Overview

How big should a commercial solar panel be?

For commercial solar panel installations, panels often range from 400W to 600W, with dimensions of approximately 195 x 99 x 3.81 cm (6.40 x 3.25 x 0.13 feet). Several factors affect the size of a solar panel, including the type of solar cells used, the desired wattage output, your property's size and the panel's overall efficiency.

How do you choose the optimum solar panel size?

By matching roof area, tilt, and daily load, people can identify the optimum solar panel size without any guesswork. Understanding solar panel size per kW turns empty terraces into tidy power stations, while clear steps on how to size a solar panel system keep budgets slim and performance steady.

How big are residential solar panels?

Today's residential solar panels come in remarkably consistent sizes, making it easier for homeowners to plan their solar installations. A typical residential solar panel measures about 65 inches by 39 inches (roughly 5.4 feet by 3.25 feet), though slight variations exist between manufacturers.

Why is solar panel size important?

Solar panel size is the key metric of every installation. A standard solar panel size (physical dimensions) of a panel determines how many solar cells it contains, which in turn affects how much power it can produce. Large commercial solar modules pack more cells, so they outrun smaller portable models on any solar panel size chart.



How big is a solar panel for a tile house



[Perfect Solar Panel Sizes for Your Home \(Expert Sizing Guide\)](#)

May 5, 2025 · Solar panels have become the cornerstone of residential clean energy, with standard sizes designed to balance power output and installation practicality. Most residential ...

[Guide to Solar Panel Sizes & Dimensions \(October 2025\)](#)

May 23, 2025 · Solar panel size refers to the total amount of power a solar panel can generate over a period of time Solar panel dimensions refers to the physical size of a solar panel Solar ...

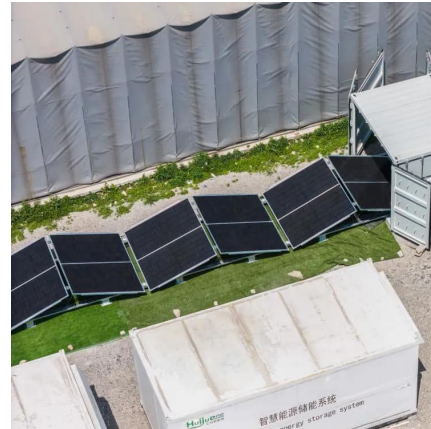


[How to Calculate Solar Panel System Size for Your House](#)

Jul 4, 2025 · Learn how to accurately determine the ideal solar panel system size for your home, balancing energy needs, roof space, sunlight, and efficiency to maximize savings and ...

[How to use solar energy in a large tile house. . NenPower](#)

Feb 27, 2024 · Adopting solar energy within the context of a large tile house presents an array of opportunities for efficiency and cost savings. By strategically assessing site conditions, ...



[How Big Is A Solar Panel For A House?](#)

Aug 7, 2024 · Selecting the right size and dimensions for solar panels is crucial for maximizing efficiency and ensuring a successful installation. This blog covers standard solar panel sizes ...



[How to Install Solar on Tile Roofs: A Step-by-Step Guide](#)

Mar 29, 2025 · Techniques for Installing Solar Panels on Tile Roofs Installing solar on a tile roof requires thoughtful planning and execution to ensure both functionality and aesthetics. We ...



Contact Us

For catalog requests, pricing, or partnerships, please visit:
<https://woodgoods.pl>



Scan QR Code for More Information



<https://woodgoods.pl>