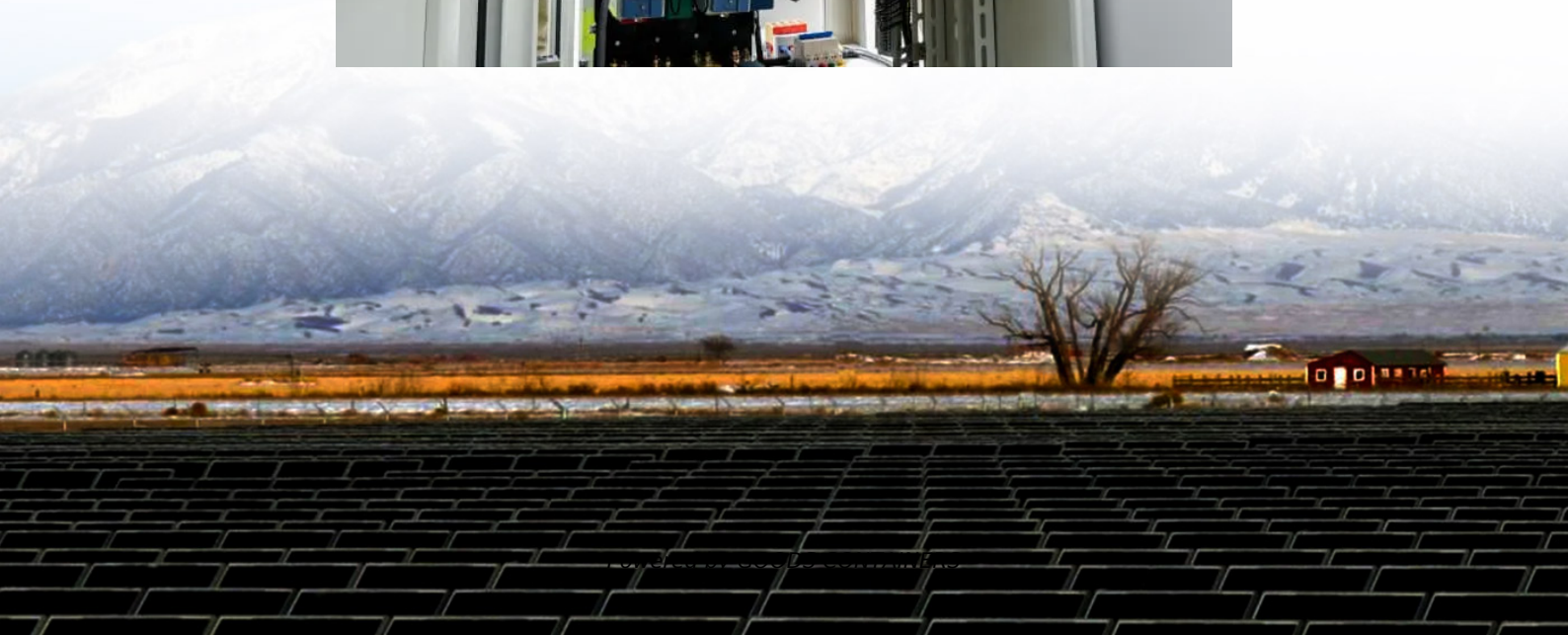


# How big of an inverter can I use for 12v72 amp hours





## Overview

---

Before we go any further, we highly recommend that you choose a pure sine wave inverter. This type of inverter delivers high-quality electricity, similar to your utility company. This way, none of your appliance.

What voltage should a 12V inverter run on?

The input voltage of the inverter should match the battery voltage. (For example 12v battery for 12v inverter, 24v battery for 24v inverter and 48v battery for 48v inverter Summary What Will An Inverter Run & For How Long?

.

What size inverter for a 12V 200Ah battery?

For a 12V 200Ah battery (2.4kWh), a 2000W inverter is ideal. Formula: Inverter Wattage  $\leq$  (Battery Voltage  $\times$  Ah Rating  $\times$  0.8). Factor in surge power needs but prioritize sustained loads. Always check the battery's max discharge rate (C-rate) to avoid exceeding safe limits. When sizing for 24V or 48V systems, recalculate using the higher voltage.

What is the recommended battery size for an inverter?

Interpreting Results: Once you input the required data, the calculator will generate the recommended battery size in ampere-hours (Ah). For instance, if your power consumption is 500 watts, the usage time is 4 hours, and the inverter efficiency is 90%, the calculator might suggest a battery size of approximately 222 Ah.

What size inverter do I Need?

The inverter size calculator takes the guesswork out of choosing the right inverter. Simply select your appliances below, and you'll instantly see the inverter size you need. Standard 12v models top out around 3000w (24v/48v ~ 4000w). To proceed: Upgrade to a higher-voltage system (24 V/48 V) for a larger inverter.



## How big of an inverter can I use for 12v72 amp hours

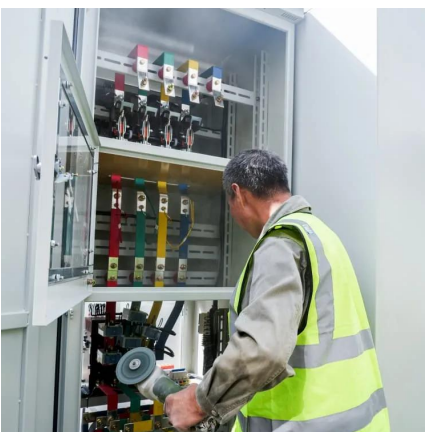


### [Can an Inverter Be Too Big for Your Battery System?](#)

FAQ Can I use a 3000W inverter with a 200Ah battery? Only if it's a 24V lithium system. For 12V lead-acid,  $200\text{Ah} \times 12\text{V} \times 0.5\text{C} = 1200\text{W}$  max. How long will a 100Ah battery last with a 1000W ...

### [How Big of an Inverter Can My Car Battery Handle?](#)

Mar 26, 2025 · Calculating inverter demand sizing There is a theoretical limit to the amount of inverter power that can be supported by an automotive battery. Theoretically, the maximum ...



### [Calculate Battery Size For Any Size Inverter \(Using Our ...\)](#)

Mar 3, 2023 · So I have made it easy for you, use the calculator below to calculate the battery size for 200 watt, 300 watt, 500 watt, 1000 watt, 2000 watt, 3000 watt, 5000-watt inverter

### [Understanding Battery Capacity and Inverter Compatibility](#)

Aug 20, 2024 · In this guide, we will delve into the practical aspects of converting amp-hours to watt-hours, calculating battery run times, and determining the right inverter size, among other ...



### [Inverter Size Calculator , Find Your Perfect Power Match](#)

Apr 25, 2025 · How the Calculator Works Pick your appliances. Use the dropdown to add common devices--or enter your own custom items. Minimum Inverter Size: The smallest ...



### [How Much Battery Capacity Do You Need With a 12V Inverter?](#)

Jun 14, 2025 · So you've snagged a shiny 12V inverter and a box of hopes--now you're wondering, "Exactly how big a battery bank do I need?" I've asked that same head-scratcher ...



### [Calculate Battery Size for Inverter Calculator](#)

Mar 14, 2025 · The Calculate Battery Size for Inverter Calculator helps you determine the optimal battery capacity needed to support your inverter system. By inputting critical parameters such ...





## Contact Us

---

For catalog requests, pricing, or partnerships, please visit:  
<https://woodgoods.pl>

### Scan QR Code for More Information



<https://woodgoods.pl>