

# How many amps does a 13 watt solar panel have





## Overview

---

How many amps does a solar panel produce?

On average, solar panels produce on their own between 4 to 13 amps, depending on the power and voltage rating of the panel. This study is based on 100-watt up to 500-watt panels. However, what does this even mean?

Does my 400w panel produce like an “actual” 10 amps to power my refrigerator, laptop, AC conditioner, and some other appliances?

.

How many amps does a 100 watt solar panel produce?

A 100-watt solar panel will produce 0.65 amps of AC current in the US with 120 volts or 0.34 amps in places with 230 volts AC grid (like Europe). In addition, it will supply your 12-volt battery bank with 7.3 amps, 3.67 amps for the 24-volt battery bank, 2.44 amps for the 36-volt battery bank, and 1.83 amps for the 48-volt battery bank.

What wattage does a solar panel produce?

The majority of today’s home solar panel components have wattage output ratings ranging from 250 to 400 watts of electricity, with higher power output wattage ratings preferred over lower power ratings. A solar panel’s wattage determines how much electricity it can generate under the same conditions.

How many Watts Does a solar system have?

Solar panel system capacity x number of panels Capacity divided by the system total size (number of panels x size of one panel) 16 panels, each with a capacity of 265 watts:  $16 \times 265 = 4,240$  kW The solar system overall size (16 panels of 1.6 m<sup>2</sup> each)  $165 \text{ W per m}^2 = 4,240 / 25.6$  electricity cost.  
Source : unsplash.com



## How many amps does a 13 watt solar panel have

---

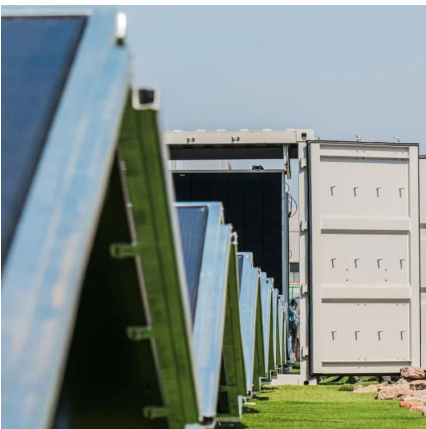


### [How Many Amps Do Solar Panels Produce? \(Free Calculator\)](#)

Jul 17, 2022 · If you are newly starting in the solar power world, you might have many confusing questions flowing through your mind. One of those questions is how many amps will my solar ...

### [Solar Panel Sizes, Dimensions and Wattage](#)

Nov 27, 2022 · Traditionally, solar panels can be categorised into two sizes: 60-cell and 72-cell solar panels. The size in watts corresponds to their physical dimensions and power output. For ...



### [How To Calculate Solar Panel Output? - Glyde Solar](#)

$937.5 / 1000 = 0.937$  watt-hours per day  
3. How to calculate solar panel output amperage? Divide the power in watts by the voltage in volts to get the current in amps. For instance, if the solar ...

## Contact Us

---

For catalog requests, pricing, or partnerships, please visit:  
<https://woodgoods.pl>



## Scan QR Code for More Information



<https://woodgoods.pl>