

How many layers of glass does solar have





Overview

What is the top layer of a solar panel?

The top layer of most solar panels is a sheet of tempered glass, which accounts for nearly three-quarters of a crystalline panel's total weight. As the panel's first line of defense, this layer protects the sensitive solar cells underneath weather and debris.

What are the components of a solar panel?

A solar panel typically consists of a junction box, back sheet, solar cells, encapsulant layer, glass cover, and frame. The solar cells generate electricity, the back sheet covers the rear, the junction box has electrical connections, the glass protects the cells, the frame provides structural support, and the encapsulant binds everything together.

What is a solar panel layer?

The structure of solar panel layers varies significantly across different panel technologies, affecting everything from efficiency to application versatility. Each panel type employs a unique layer configuration to harness solar energy based on its design philosophy.

Why are solar cells made of glass?

Without this, more of the light would be reflected away instead of being absorbed straight into the silicon. This layer is often made of titanium oxide or silicon nitride. A layer of glass is added over the collection of solar cells to protect them from chipping and other kinds of damage from the elements.



How many layers of glass does solar have



[What Are Solar Panels Made Of? Materials Explained](#)

When you look at a solar panel, it might just seem like a flat sheet of dark glass capturing sunlight. But inside that sleek surface lies a complex, precisely engineered system ...

[Double the strengths, double the benefits](#)

In contrast, double glass modules replace the polymer layer with another glass sheet, creating a robust sandwich structure. At IBC SOLAR, we use 2,0 mm x 2,0 mm glass layers, whereas some other ...



[Exploring the Layers of a Solar Panel Structure](#)

A solar panel typically consists of a junction box, back sheet, solar cells, encapsulant layer, glass cover, and frame. The solar cells generate electricity, the back sheet covers the rear, the junction box has ...

[Structure and Operating Principles of Solar ...](#)

Structure of Solar Panels Solar panels are divided into 8 components: aluminum frame, tempered



glass, EVA layer, solar cell layer, backsheet, junction box, DC cable, and MC4 connector. 1. Aluminum ...



[Structure and Operating Principles of Solar Panels, DAT Group](#)

Structure of Solar Panels Solar panels are divided into 8 components: aluminum frame, tempered glass, EVA layer, solar cell layer, backsheet, junction box, DC cable, and ...

[How many layers of solar energy, NenPower](#)

The question of how many layers of solar energy exists can be answered by examining three core aspects: 1) Solar energy is harnessed through various technologies, 2) Different layers exist in solar cells, and 3) ...



[What Are Solar Panels Made Of? Materials ...](#)

When you look at a solar panel, it might just seem like a flat sheet of dark glass capturing sunlight. But inside that sleek surface lies a complex, precisely engineered system made from advanced materials ...



[Difference Between Single Glass & Double Glass Solar Panels](#)

What is the double glass solar panel? In dual-glass solar panels, an additional layer of tempered glass is attached to the back of the module, therefore replacing the backsheet. Using two ...



[Difference Between Single Glass & Double ...](#)

What is the double glass solar panel? In dual-glass solar panels, an additional layer of tempered glass is attached to the back of the module, therefore replacing the backsheet. Using two layers of glass makes the ...

[Solar panel components: A complete guide to every part](#)

The top layer of most solar panels is a sheet of tempered glass, which accounts for nearly three-quarters of a crystalline panel's total weight. As the panel's first line of defense, ...



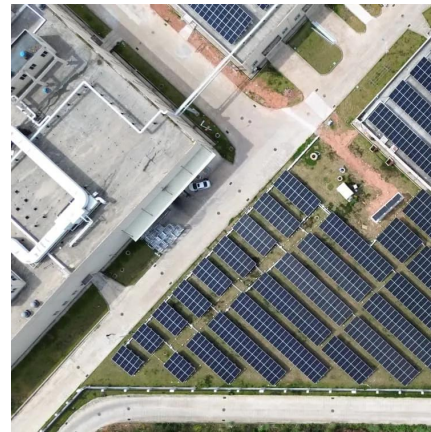
[Exploring the Layers of a Solar Panel Structure](#)

A solar panel typically consists of a junction box, back sheet, solar cells, encapsulant layer, glass cover, and frame. The solar cells generate electricity, the back sheet ...



[How many layers does a solar panel have? , NenPower](#)

1. Solar panels typically comprise multiple layers, usually 3 to 5, which include the protective cover, the photovoltaic cells, backsheet, and the encapsulant. 2. Each layer serves ...



[Essential Guide to Understanding Solar Panel Layers \(With ...](#)

Top glass: Light entry and weather protection
The topmost layer of a solar panel consists of tempered, low iron-content glass. This specialised glass serves as the primary ...

Contact Us

For catalog requests, pricing, or partnerships, please visit:
<https://woodgoods.pl>



Scan QR Code for More Information



<https://woodgoods.pl>