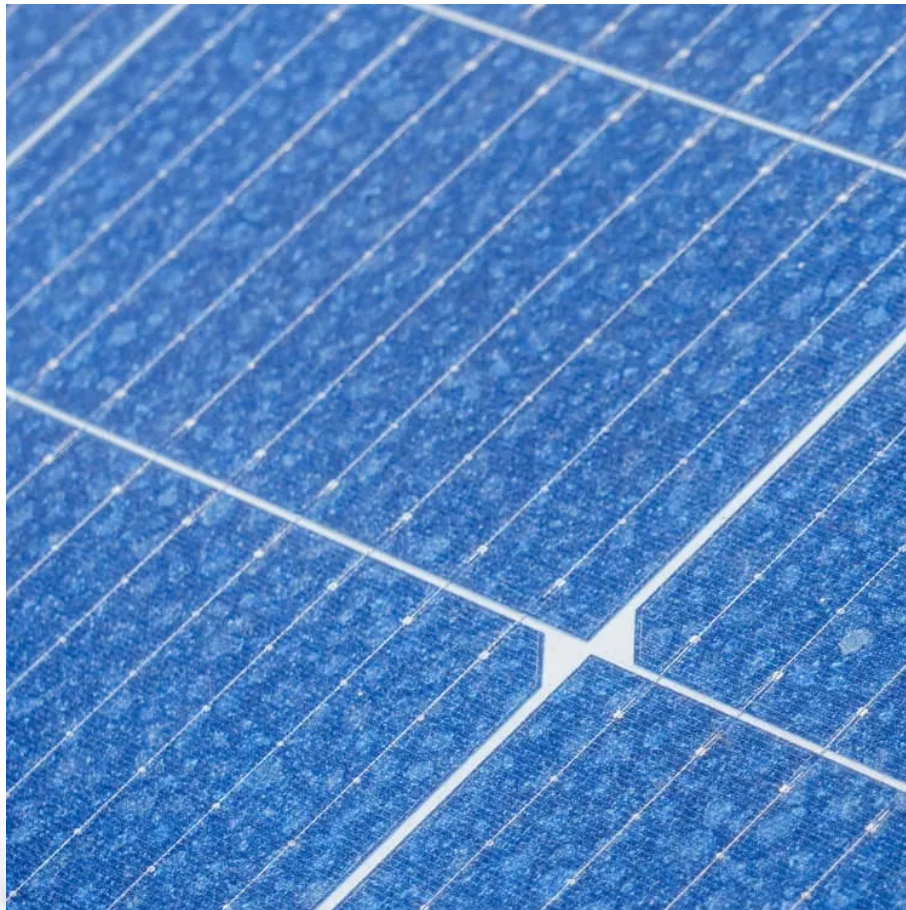


How many panels does a 15kw inverter in North Korea have at most





Overview

How many solar panels can a 5kw inverter handle?

If you're wondering how many solar panels you can put on your inverter, the answer is: it depends. The capacity of an inverter is measured in kilowatts (kW), and most household inverters are between 3kW and 10kW. So, a 5kW inverter could handle around 20 standard 250-watt solar panels. But that's not the whole story.

How big is a 15 kW solar system?

Most solar panels have a capacity of around 300 watts. Therefore, to achieve a 15kW solar system, you will need at least 50 solar panels or more. Each panel takes up approximately 17 square feet of space, resulting in a total footprint of 850 square feet for the entire system.

How many solar panels do you need for a 20kW Solar System?

For a 20kW solar system, you would need either 200 100-watt solar panels, 100 200-watt solar panels, 68 300-watt solar panels, or 50 400-watt solar panels. This is just how easy it is. We hope that this illustrates well how many solar panels you need for these differently-sized solar systems.

How many solar panels do I need for a 5kW system?

If you are using only 400-watt solar panels, you will need 13 400-watt solar panels for a 5kW solar system (13 × 400 watts is actually 5200 watts, so this is a 5.2kW system). Quite simple, right?

You can also mix solar panels with different wattages.



How many panels does a 15kw inverter in North Korea have at most



[15kW Solar System: Price, Load Capacity, How Big, and More](#)

Jul 18, 2023 · How Many Panels Are Needed? Most solar panels have a capacity of around 300 watts. Therefore, to achieve a 15kW solar system, you will need at least 50 solar panels or ...

[Sol-Ark 15K-2P-N 15kW Hybrid Inverter, Solar Electric Supply](#)

Sol-Ark Limitless 15K-LV Residential Hybrid Inverter Introducing the Sol-Ark 15K-2P-N Residential Hybrid Inverter, a powerful and versatile solution for your solar energy needs. This inverter is ...



[How Many Solar Panels Can I Connect to an Inverter?](#)

Nov 6, 2024 · Connecting the right number of solar panels to your inverter is about more than just filling space on your roof--it's essential for making your system work efficiently, safely, and ...

[How Many Solar Panels Can I Connect to an Inverter? A ...](#)

4 days ago · Learn how to optimize your solar power system by understanding how many solar panels can be connected to an inverter. Explore inverter specifications, wiring configurations, ...



[How many solar panels can an inverter handle](#)

Sep 20, 2024 · Key Takeaways: Inverter Capacity: The number of solar panels an inverter can handle is primarily determined by its power rating, usually measured in watts (W). Panel ...



[How Many Panels In 1kW, 3kW, 5kW, 10kW, 20kW Solar ...](#)

1 day ago · Alright, figuring out how many panels you need for different sizes of solar systems is really easy. We will show you how to determine the number of panels needed for any solar ...



[How Many Solar Panels Can One Inverter Handle?](#)

Sep 23, 2025 · How many solar panels for a 2000-watt inverter? For a 2000-watt inverter, the number of solar panels depends on panel wattage, but a general guideline is around 6 to 8 ...





Contact Us

For catalog requests, pricing, or partnerships, please visit:
<https://woodgoods.pl>

Scan QR Code for More Information



<https://woodgoods.pl>