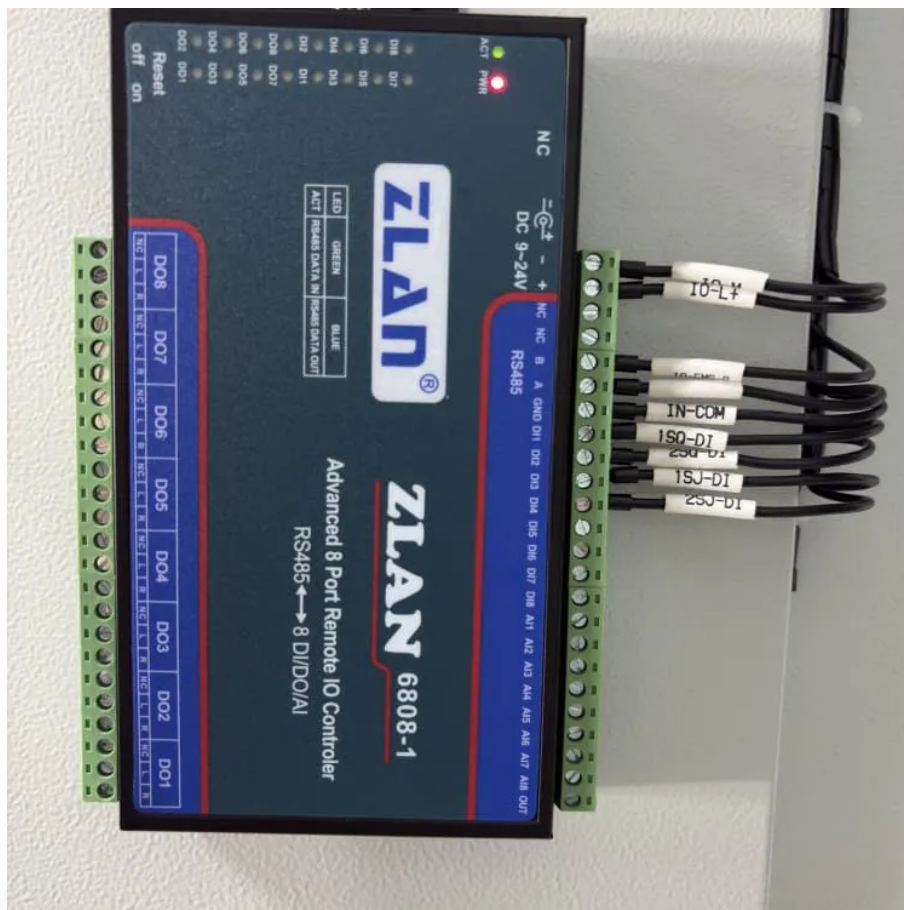


# How many solar panels can a 25kw inverter connect at most





## Overview

---

Can a solar system have multiple inverters?

A: Yes, using multiple inverters is a common approach for larger solar panel systems. In this setup, the system can be designed with several inverters, allowing you to connect more panels overall. Each inverter can manage a specific number of panels, and this can enhance system performance and efficiency.

How many volts can a solar inverter handle?

Each inverter comes with its specific ratings, including input voltage, output power, and the ability to manage several strings of solar panels. For instance, if your inverter supports a maximum input voltage of 600 volts and your solar panel system operates at a lower voltage, you are in safe territory.

How much power does a 5KVA inverter need?

If you are looking to power a 5kva inverter with solar panels, you will need at least 18 250-watt panels. This is because the inverter will require 1,500 watts of power and each panel produces about 250 watts of power. Inverters also have a peak wattage, which is usually about 50% higher than the continuous wattage.

How many solar panels can a 5 kW inverter use?

You will also need to consider the wattage of the solar panels you plan to use. For example, if you have a 5 kW inverter and each of your solar panels is rated at 300 watts, you can calculate the maximum number of panels by dividing the inverter's capacity by the panel wattage:  $5,000 \text{ watts (inverter)} / 300 \text{ watts (panel)} = \text{approximately } 16.67$ .



## How many solar panels can a 25kw inverter connect at most



### [How many solar panels can an inverter handle](#)

Sep 20, 2024 · A: Connecting too many solar panels to a single inverter can lead to overloading, which can damage the inverter and result in decreased efficiency. Overloading occurs when ...

### [How Many Solar Panels Do You Need for a 25kVA Inverter](#)

Dec 4, 2025 · Real-world number may increase depending on batteries, sunlight hours, and system type. Conclusion Designing a solar system for a 25kVA inverter isn't difficult when you ...



### [How Many Solar Panels Can Go On One Inverter?](#)

Oct 17, 2025 · The maximum number of solar panels that can be connected to a single string inverter is  $13 * 1000 = 13 \text{ kW}$  per MPPT. If the inverter is from a reliable model, it will limit the ...

### [How Many Solar Panels Can I Connect to an Inverter? A ...](#)

3 days ago · Learn how to optimize your solar power system by understanding how many solar panels can be connected to an inverter. Explore inverter specifications, wiring configurations, ...



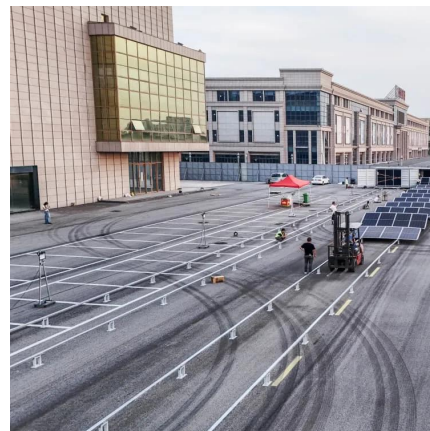
### [How Many Solar Panels Can I Connect to an Inverter?](#)

Nov 6, 2024 · Connecting the right number of solar panels to your inverter is about more than just filling space on your roof--it's essential for making your system work efficiently, safely, and ...



### [How Many Solar Panels Can Be Connected To Solar Inverter?](#)

Mar 7, 2025 · When configuring the number of solar panels, the inverter needs to be calculated and analyzed in detail based on the maximum solar input power, solar input voltage range, ...



## Contact Us

---

For catalog requests, pricing, or partnerships, please visit:  
<https://woodgoods.pl>



## Scan QR Code for More Information



<https://woodgoods.pl>