

How much power does a 5g base station consume at night





Overview

Are 5G base stations causing more energy consumption?

However, Li says 5G base stations are carrying five times the traffic as when equipped with only 4G, pushing up power consumption. The carrier is seeking subsidies from the Chinese government to help with the increased energy usage.

What is 5G BS power consumption?

The 5G BS power consumption mainly comes from the active antenna unit (AAU) and the base band unit (BBU), which respectively constitute BS dynamic and static power consumption. The AAU power consumption changes positively with the fluctuation of communication traffic, while the BBU power consumption remains basically unchanged , , .

How does mobile data traffic affect the energy consumption of 5G base stations?

The explosive growth of mobile data traffic has resulted in a significant increase in the energy consumption of 5G base stations (BSs).

What is 5G base station?

1. Introduction 5G base station (BS), as an important electrical load, has been growing rapidly in the number and density to cope with the exponential growth of mobile data traffic . It is predicted that by 2025, there will be about 13.1 million BSs in the world, and the BS energy consumption will reach 200 billion kWh .



How much power does a 5g base station consume at night



[5G base stations consume so much power that operators are ...](#)

Night sleep can be understood as a flexible adjustment to reduce power consumption and save power. Tower told News that the current average power consumption of a single tenant of a ...

[How Much Power Does 5G Base Station Consume? , Huijue ...](#)

Aug 26, 2023 · The Silent Energy Crisis in Mobile Networks Have you ever wondered how much energy our hyper-connected world is consuming? 5G base stations, the backbone of next-gen ...



[Will the 5G base station lose power at night](#)

Nov 26, 2025 · How much power does a 5G station use? The power consumption of a single 5G station is 2.5 to 3.5 times higher than that of a single 4G station. The main factor behind this ...



[Energy consumption optimization of 5G base stations ...](#)

Aug 1, 2023 · An energy consumption optimization strategy of 5G base stations (BSs) considering variable threshold sleep mechanism (ECOS-BS) is proposed, which includes the initial ...



[A technical look at 5G energy consumption and performance](#)

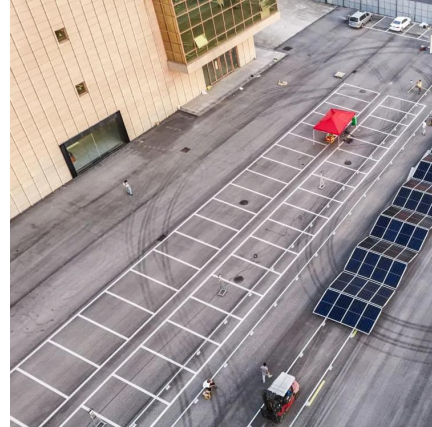
Base Station Power Consumption
Energy Saving Features of 5G New Radio
How Much Energy Can We Save with Nr Sleep Modes?
Impact on Energy Efficiency and Performance in A Super Dense Urban Scenario
Further Reading
The 5G NR standard has been designed based on the knowledge of the typical traffic activity in radio networks as well as the need to support sleep states in radio network equipment. By putting the base station into a sleep state when there is no traffic to serve i.e. switching off hardware components, it will consume less energy. The more component See more on ericsson chrisnell [PDF]

Will the 5G base station lose power at night

Nov 26, 2025 · How much power does a 5G station use? The power consumption of a single 5G station is 2.5 to 3.5 times higher than that of a single 4G station. The main factor behind this ...

[5G base stations use a lot more energy than 4G base stations...](#)

Apr 3, 2020 · A typical 5G base station consumes up to twice or more the power of a 4G base station, writes MTN Consulting Chief Analyst Matt Walker in a new report entitled " Operators ...



[Why does 5g base station consume so much power and how ...](#)

Apr 3, 2025 · The power consumption of the 5G base station mainly comes from the AU module processing and conversion and high power-consuming high radio frequency signals, the ...

Contact Us

For catalog requests, pricing, or partnerships, please visit:
<https://woodgoods.pl>

Scan QR Code for More Information



<https://woodgoods.pl>