

# How much power does each base station require





## Overview

---

How much power does a base station have?

Maximum base station power is limited to 38 dBm output power for Medium-Range base stations, 24 dBm output power for Local Area base stations, and to 20 dBm for Home base stations. This power is defined per antenna and carrier, except for home base stations, where the power over all antennas (up to four) is counted.

How much power does a solar base station use?

Maximum consumption of base station is 2.0 kW and the power generated from the solar panels is 4.19 kW. The high-capacity rechargeable batteries can store between 14 and 16 hours' worth of power when energy from sun is not available.

How much power does a cellular base station use?

A cellular base station can use anywhere from 1 to 5 kW power per hour depending upon the number of transceivers attached to the base station, the age of cell towers, and energy needed for air conditioning. Cellular base stations use power without any interruption and also needs maintenance.

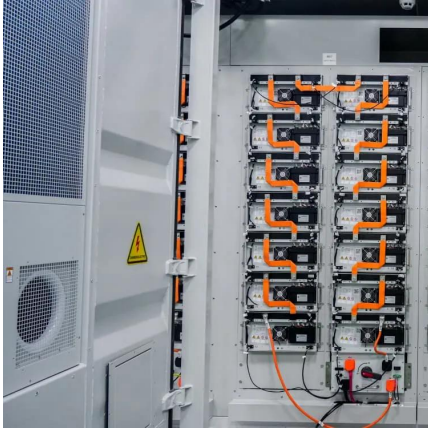
What is the maximum base station Power?

Maximum base station power is limited to 24 dBm output power for Local Area base stations and to 20 dBm for Home base stations, counting the power over all antennas (up to four). There is no maximum base station power defined for Wide Area base stations.



## How much power does each base station require

---



### [How much energy storage battery is used in base stations?](#)

Aug 25, 2024 · Navigating the complexities of energy storage requirements for base stations elucidates the dynamic interplay between capacity, technology, regulations, and sustainability. ...

### [How Much Power Does 5G Base Station Consume? , HuiJue ...](#)

Aug 26, 2023 · The Silent Energy Crisis in Mobile Networks Have you ever wondered how much energy our hyper-connected world is consuming? 5G base stations, the backbone of next-gen ...



### [Power Consumption Assessment of Telecommunication Base Stations](#)

Jul 19, 2024 · Energy consumed in telecommunication base stations is a significant part of the cellular network energy footprint. Efficient energy use, renewable energy sources, and ...



### [Why does 5g base station consume so much power and how ...](#)

Apr 3, 2025 · The power consumption of the 5G base station mainly comes from the AU module processing and conversion and high power-consuming high radio frequency signals, the ...



## Contact Us

---

For catalog requests, pricing, or partnerships, please visit:  
<https://woodgoods.pl>

**Scan QR Code for More Information**



<https://woodgoods.pl>