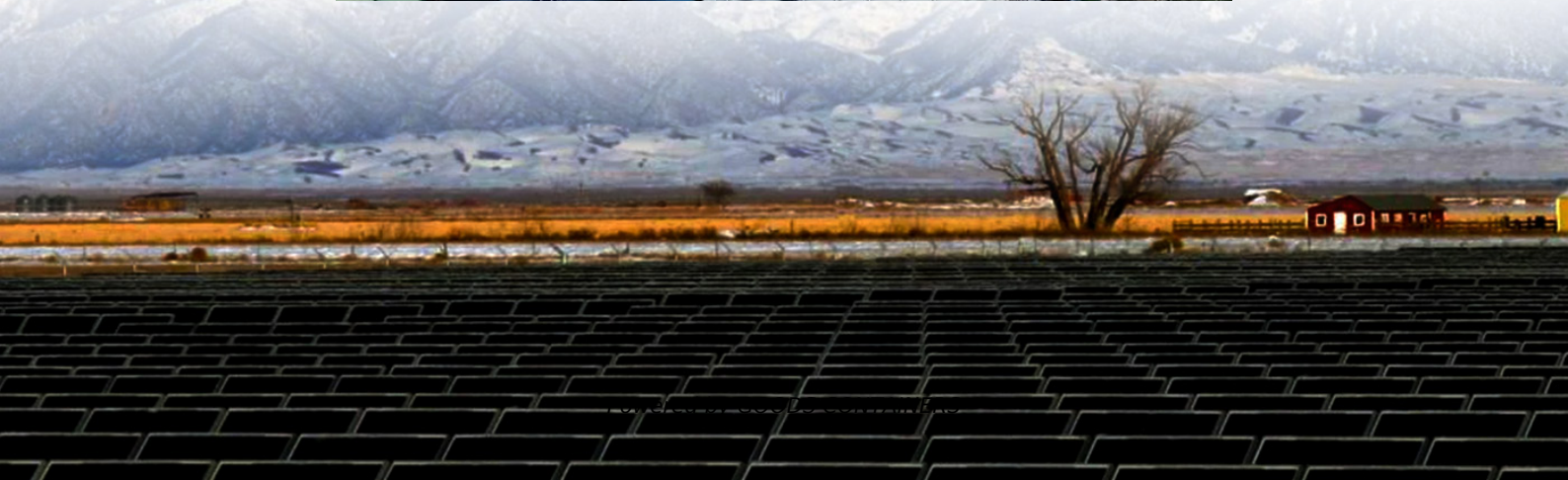


How often should the base station power module be replaced





Overview

What causes a base station to stop working?

Statistics from within the industry indicate that 65 percent of communications interruptions are caused by power supply failures, with 85 percent of them discovered after more than 12 hours, thanks largely to customer complaints. Other challenges to base station operation include heat, fire, flood, and theft.

What are the components of a base station?

A base station consists of a set of equipments including power amplifiers, baseband units, RF units, power supplies, and air conditioning. The power of a base station in operation in a 4G cellular network is 30 . .

Why are base stations important?

By Yang Ji Base stations are the key energy consumers on any mobile network; their monitoring and upgrade are essential if operators are to compete.

How do urban radio stations manage power & environmental management?

For urban radio sites, some operators use a multi-layer control system for their power & environmental management. Each city has a power & environmental monitoring system which reports to a higher-level monitoring center.



How often should the base station power module be replaced

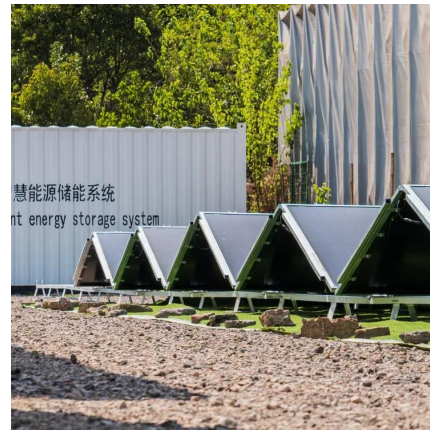


How often should the power supply of a communication base station ...

Power Supply: The power source provides the electrical energy to base station elements. It often features auxiliary power supply mechanisms that guarantee operation in case of lost or ...

How often should CPRI Cable in a base station be maintained?

It's made with Low Smoke Zero Halogen (LSZH) materials, which are safer in case of a fire. In conclusion, there's no one - size - fits - all answer to how often CPRI cables in a base station ...

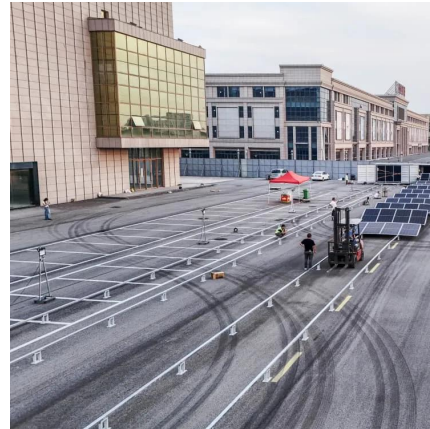


Details of the power consumption for an LTE-macro base station ...

Download Table , Details of the power consumption for an LTE-macro base station [21,22]. from publication: Optimal Solar Power System for Remote Telecommunication Base Stations: A ...

Reliable Solutions for Efficient base station power module in ...

Discover the benefits of reliable base station power module with high-capacity power and compact design. Perfect for outdoor adventures or emergency backup, ensuring energy independence ...



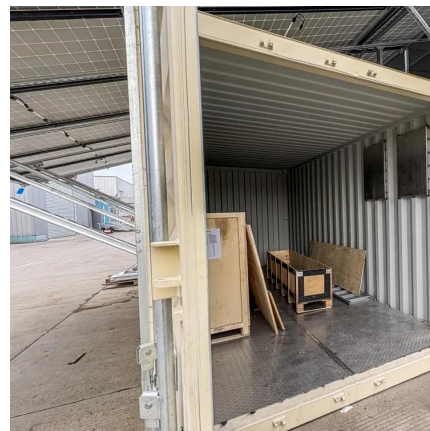
[How often should the energy storage station be replaced?](#)

Apr 10, 2024 · The dialogue surrounding energy storage station replacements encapsulates multifaceted components involving technology, economy, and environmental stewardship. The ...



Discussion on Power Consumption Test Method of 3G Base Station ...

The real-time energy consumption of base stations is affected by many factors, including the environment (temperature, humidity), installation location and heat dissipation method, carrier ...



[Optimum sizing and configuration of electrical system for](#)

Jul 1, 2025 · The study [13] has discussed on integration of renewable energy sources and evaluating the possibility of power switching off base stations during zero traffic, minimal traffic ...





[The Unsung Hero of Telecom Energy: Why Base Station Power ...](#)

Oct 17, 2025 · EverExceed's high-efficiency base station power solutions combine smart monitoring, energy optimization, and renewable integration to help operators reduce costs, ...



[Aerial Base Stations: Practical Considerations for Power ...](#)

Mar 11, 2024 · However, a comprehensive understanding of the various power consumption streams is also crucial for developing a holistic perspective on this issue. Unfortunately, most ...

[Establishing efficient power & environmental monitoring ...](#)

By Yang Ji Base stations are the key energy consumers on any mobile network; their monitoring and upgrade are essential if operators are to compete. Statistics from within the industry ...



Contact Us

For catalog requests, pricing, or partnerships, please visit:
<https://woodgoods.pl>



Scan QR Code for More Information



<https://woodgoods.pl>