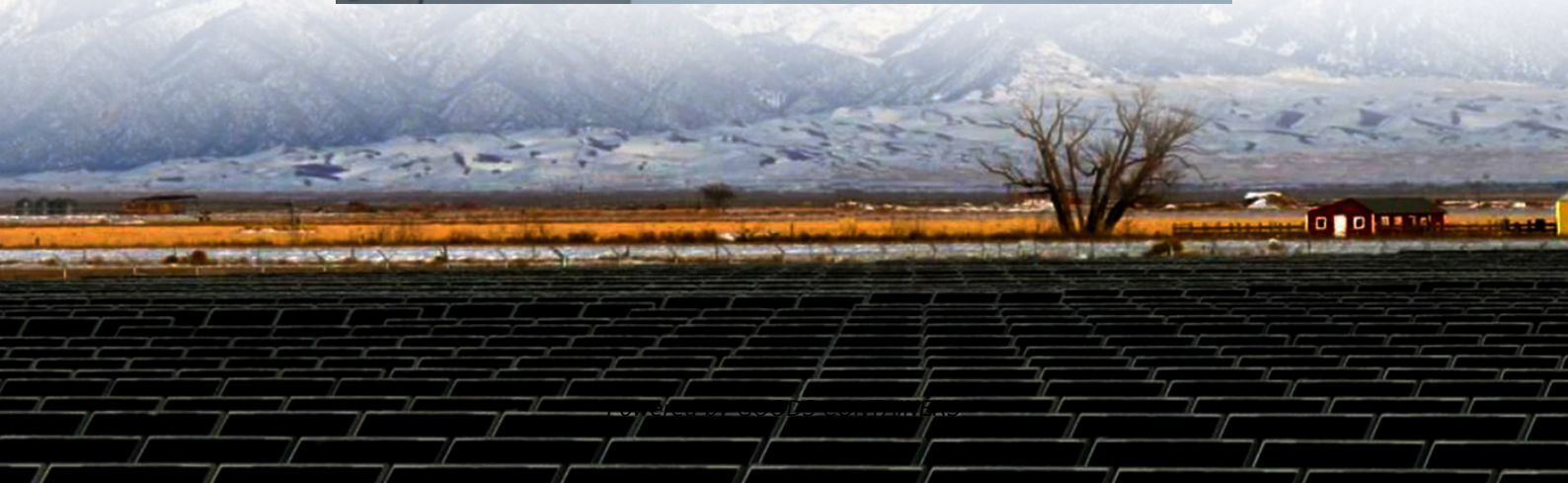


How to measure the internal resistance of the base station battery





Overview

As illustrated in the figure, the AC four-terminal method, which connects an AC voltmeter to the battery's positive and negative electrodes, lets you measure the battery's internal resistance accurately while minimizing the effects of measurement cable resistance and contact resistance. What is battery internal resistance?

Battery internal resistance is a critical performance parameter that determines the runtime, power delivery, current capabilities, efficiency and health of a battery. Measuring the internal resistance allows you to analyze battery characteristics and performance for design optimization, production testing or periodic maintenance.

How to measure internal resistance of a battery?

One can mention the IEC 61960 standard or PNGV (Partnership for a New Generation of Vehicles) procedure for example. Measurement methods for the internal resistance of batteries can be divided up into two categories: DC (Direct Current) techniques and AC (Alternating Current) techniques.

Why is internal resistance measurement important for lead-acid batteries?

With lead-acid batteries, monitoring internal resistance helps predict maintenance needs and detect sulfation or plate degradation. Across all battery types, internal resistance measurement ensures safe operation, extends lifespan, and supports optimal performance in both consumer and industrial applications.

How do you measure a battery voltage without a load?

Measuring a battery voltage without any load with a voltmeter starts the process of calculating its internal resistance. Then, connect a load with known resistance across the battery and track the voltage once more. Having gotten these readings, you should do some paperwork. There are several ways to measure a battery's internal resistance.



How to measure the internal resistance of the base station battery



[How To Measure Internal Resistance With A Multimeter](#)

May 7, 2025 · Discover a straightforward method to calculate the internal resistance of lithium-ion batteries using a multimeter. Learn how to assess voltage drop, current, and battery efficiency ...

How to measure a battery's internal resistance with a battery ...

The Hioki BT3562 battery tester is designed to measure internal resistance using an AC current at a measurement frequency of 1 kHz, letting you accurately capture the internal resistance of ...



[How to Measure Internal Resistance of a Battery](#)

Feb 14, 2023 · A commonly encountered school-level Physics practical is the determination of the internal resistance of a battery - typically an AA or D cell. Typically this is based around a ...

[Internal Resistance of a Battery: How to Measure It - Flex PCB](#)

Aug 29, 2024 · What is Battery Internal Resistance? Battery internal resistance is a crucial parameter that determines the performance and efficiency of a battery. It is the measure of ...



[Mastering the Art of Measuring Battery Internal Resistance: ...](#)

May 14, 2025 · With several measurement methods available--each having distinct advantages, limitations, and applications--it's essential to adopt the right approach for accurate results. ...



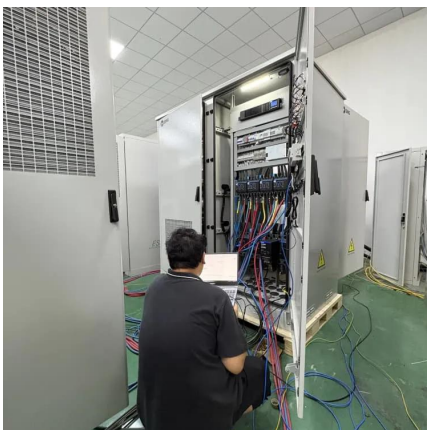
[Methods for Measuring Battery Internal Resistance: A ...](#)

Feb 2, 2024 · Learn the key methods for measuring battery internal resistance, including open circuit voltage, constant current discharge, AC measurement, and electrochemical impedance ...



[How To Find Internal Resistance of a Battery](#)

May 20, 2025 · Understanding internal resistance is important for engineers, electricians, and even everyday users who want to evaluate battery performance. It also helps when you're ...





Internal Resistance series. Part II: How to determine the internal

Nov 18, 2024 · Part II: How to determine the internal resistance of a battery? Introduction The field of battery and energy storage continues to grow exponentially with the development of ...



[How to Measure the Internal Resistance of a Battery?](#)

1 day ago · Introduction Battery internal resistance is a critical performance parameter that determines the runtime, power delivery, current capabilities, efficiency and health of a battery. ...

Contact Us

For catalog requests, pricing, or partnerships, please visit:
<https://woodgoods.pl>

Scan QR Code for More Information



<https://woodgoods.pl>