

How to release the discharge current of base station battery





Overview

How a battery discharge process is performed in safe conditions?

For the discharge process to be performed in safe conditions, besides gathering information about the battery's capacity, SoC and SoH at the beginning of the process it is necessary to monitor the temperature and voltage of individual modules, preferably even groups of cells, as well as to control the discharge current.

What happens during the discharge process of a battery?

Discharge Process: During the discharge process, the battery's chemical reactions undergo a reversal. Lithium ions migrate from the negative electrode to the positive electrode, while electrons travel from the negative electrode to the positive electrode.

How long do base station batteries last?

After using BatAlloc to allocate suitable numbers of battery groups for base stations, the average battery lifetime has achieved to 4.3 years, roughly 1.8 times longer than that of the original allocation. The results indicate that our framework can also better protect base station batteries and significantly prolong their average lifetimes.

What determines a battery discharge rate?

The discharge rate is determined by the vehicle's acceleration and power requirements, along with the battery's design. The charging and discharging processes are the vital components of power batteries in electric vehicles. They enable the storage and conversion of electrical energy, offering a sustainable power solution for the EV revolution.



How to release the discharge current of base station battery

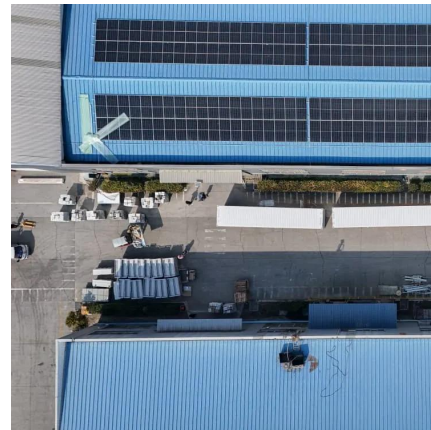


How to Discharge a Battery Safely and Effectively: Expert Tips ...

Oct 9, 2025 · This article explains how to discharge a battery safely, covering battery types, procedures, cutoff voltages, and safety tips to maintain performance, longevity, and reliability.

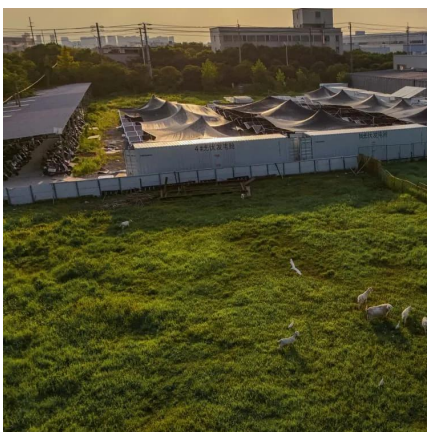
[5G Base Station Lithium Battery: Capacity and Discharge ...](#)

Sep 26, 2025 · Typical Values: 5G Macro Station: Continuous discharge up to 500A. Urban Small Cell: Peak discharge up to 150A. EverExceed's high-rate discharge LiFePO4 batteries are ...



[Backup Battery Analysis and Allocation against Power ...](#)

Jan 17, 2022 · Battery groups are installed as backup power in most of the base stations in case of power outages due to severe weathers or human-driven accidents, particularly in remote ...



[EV Battery Process: Charging and Discharging Explained](#)

Oct 17, 2024 · The BMS continually observes the battery's status, ensuring cell balance, and stable voltage, and preventing over-discharge. These steps are crucial for prolonging the ...



[\(PDF\) Dispatching strategy of base station backup power ...](#)

Apr 1, 2023 · With the mass construction of 5G base stations, the backup batteries of base stations remain idle for most of the time. It is necessary to explore these massive 5G base ...



[A cleaner approach to the discharge process of spent lithium ...](#)

May 10, 2020 · Recycling valuable metals from the batteries has aroused much attention recently. However, the elimination of residual electricity is often neglected, and NaCl-discharging is ...



Contact Us

For catalog requests, pricing, or partnerships, please visit:
<https://woodgoods.pl>



Scan QR Code for More Information



<https://woodgoods.pl>