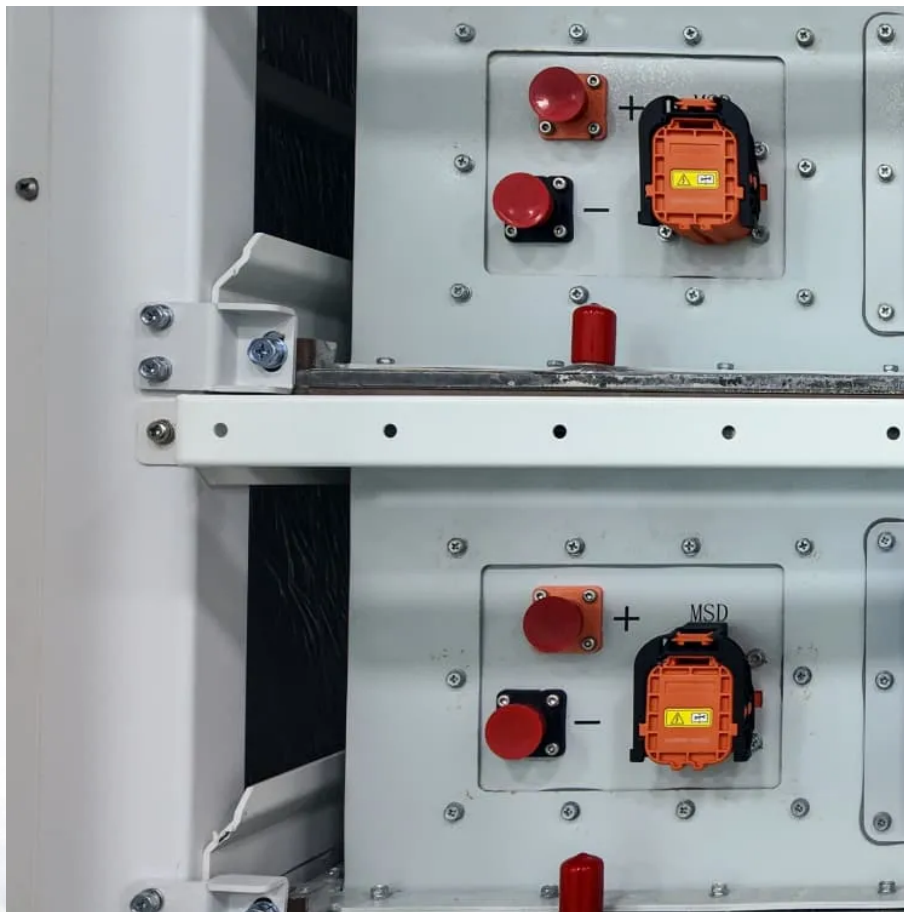


Hytera 350M solar container communication station wind and solar complementarity





Overview

What are the constraints of a solar power system?

Constraints (11) and (12) consider that the power produced by each source at a given moment must be equal to or higher than zero and less than the total installed capacity. Such criteria are necessary to describe real situations like wind speed below turbine cut-in speed or the absence of solar generation during the night.

What is complementarity in PV & wind HSC?

In the case of PV + Wind HSC scenario, the complementarity enables to obtain a flat net load profile during the day. The daily amplitude is nearly 1500 MW with reduced hourly step-changes enabling to decrease the power system flexibility requirements needs. In this case, the highest net load values are expected by the end of the day (7 to 10 p.m.).

Do wind and solar PV complementarity exist in the Iberian Peninsula?

The wind and solar PV complementarity have also been verified on the Iberian Peninsula using different datasets and approaches [23, 24].



Hytera 350M solar container communication station wind and solar



[Exploring Wind and Solar PV Generation Complementarity to ...](#)

Aug 10, 2020 · Understanding the spatiotemporal complementarity of wind and solar power generation and their combined capability to meet the demand of electricity is a crucial step

...

[Optimizing wind-solar hybrid power plant configurations by ...](#)

Jan 3, 2025 · The intermittent nature of wind and solar sources poses a complex challenge to grid operators in forecasting electrical energy production. Numerous studies have shown that the ...



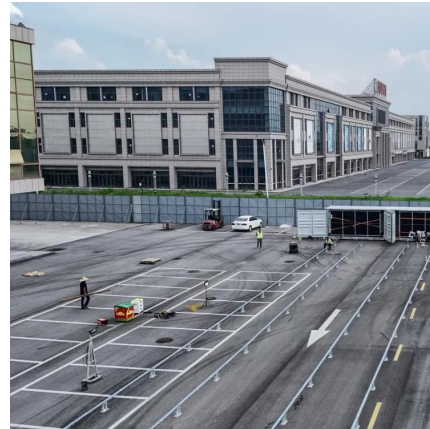
Temporal and spatial heterogeneity analysis of wind and solar ...

Sep 1, 2024 · Wind and solar power joint output can smooth individual output fluctuations, particularly in provinces and seasons with richer wind and solar resources. Wind power output ...

[World's Biggest Solar-Powered Hydrogen Plant Begins ...](#)

2025-08-11 Shenzhen, China - Hytera, a leading global provider of professional communications technologies and solutions, provided mission-critical communication solutions for the world's

...



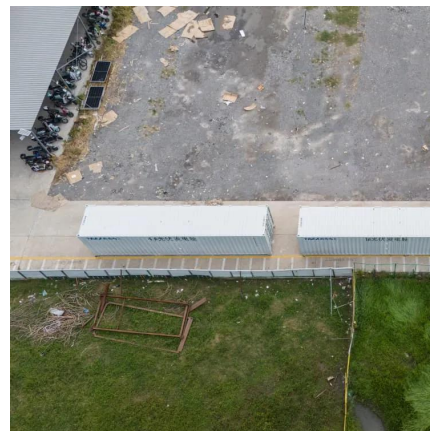
[The wind-solar hybrid energy could serve as a stable power ...](#)

Oct 1, 2024 · In addition, the authors found that the complementary strength between wind and solar power could be enhanced by adjusting their proportions. This study highlights that hybrid ...



Review of mapping analysis and complementarity between solar and wind

Nov 15, 2023 · The paper framework is divided as: 1) an introduction with gaps and highlight; 2) mapping wind and solar potential techniques and available data to perform it; 3) a review of ...



[Integrated Solar-Wind Power Container for Communications](#)

This large-capacity, modular outdoor base station seamlessly integrates photovoltaic, wind power, and energy storage to provide a stable DC48V power supply and optical distribution. Perfect ...





[Wind-solar hybrid for outdoor communication base ...](#)

Dec 8, 2025 · Integrated Solar-Wind Power Container for Communications This large-capacity, modular outdoor base station seamlessly integrates photovoltaic, wind power, and energy ...



[Construction of wind and solar complementary ...](#)

Dec 1, 2025 · Jun 13, 2024 · Based on the complementarity of wind energy and solar energy, the base station wind-solar complementary power supply system has the advantages of stable ...

A review on the complementarity between grid-connected solar and wind

Jun 1, 2020 · The spread use of both solar and wind energy could engender a complementarity behavior reducing their inherent and variable characteristics what would improve predictability ...



Contact Us

For catalog requests, pricing, or partnerships, please visit:
<https://woodgoods.pl>



Scan QR Code for More Information



<https://woodgoods.pl>