

Inverter connection 24 volt





Overview

What is a solar inverter 24V?

A solar inverter system is the backbone of any solar-powered setup. It converts the direct current (DC) generated by solar panels into alternating current (AC), which can be used by household appliances. The solar inverter 24v plays a crucial role in this process, ensuring that the power output is stable and efficient.

How to install a 24V solar inverter?

Guidance of 24V system solar panels (36 V/100W solar panels as an example)
4. Inverter Installation Install the solar inverter 24v and connect it to the battery bank and solar panels. Follow the manufacturer's guidelines for proper setup. Mount the inverter in a well-ventilated area to prevent overheating.

Can a 12V battery be used as an inverter?

If you are using a 12V battery, then the input voltage of the inverter must match the battery voltage. If the specifications of the battery and the inverter do not match, the system will not operate stably and may even damage the equipment. In addition, choose the right inverter power and battery capacity for your home or commercial needs.

Can you connect multiple batteries to an inverter?

Connecting Multiple Batteries to an Inverter For increased power capacity, you can connect multiple batteries to your inverter. In a parallel connection, connect all positive terminals together and all negative terminals together. This setup increases capacity without changing the voltage.



Inverter connection 24 volt



[How to Wire Solar Panel & Batteries in Series ...](#)

PV panels and batteries are available in the range of 12-23-36V etc. The most common is the 12V system. Obviously, the series connection is less common for solar panel and batteries installation as the system will ...

[How to Wire Solar Panel & Batteries in Series for 24V System](#)

PV panels and batteries are available in the range of 12-23-36V etc. The most common is the 12V system. Obviously, the series connection is less common for solar panel ...



[How to Wire a 12v 24 Volt Solar Panel: A Comprehensive ...](#)

Find the best 12v 24 volt solar panel wiring diagram for your solar power system. Learn how to properly connect and wire your solar panels to maximize their efficiency and generate more ...



[How to Connect an Inverter to a Battery: Step-by-Step Guide ...](#)

Learn how to safely and efficiently connect an inverter to a battery with our step-by-step guide. Includes brand-specific tips for Solis, Deye, Megarevo, SRNE, and more. Perfect ...



[How to connect a 24 Volt 220v Inverter to a battery?](#)

A 24 Volt 220v Inverter is a device that converts direct current (DC) power from a battery into alternating current (AC) power, which can be used to run various electrical appliances.



[How to Wire a 12v 24 Volt Solar Panel: A](#)

...

Find the best 12v 24 volt solar panel wiring diagram for your solar power system. Learn how to properly connect and wire your solar panels to maximize their efficiency and generate more power from the sun. Get ...



[how to use 12V inverter on 24 volt \(2 battery\) system](#)

how to use 12V inverter on 24 volt (2 battery) system I am using a Victron 150/60 Smart Charger powered by 2 x 450W solar panels. 2 LIFEPO4 batteries making 24V and ...





[How to Set Up a 24 Volt Solar System , A Complete Guide](#)

A 24 volt solar system uses multiple solar panels wired in series to produce a higher DC voltage output around 24V. This 24V DC electricity is stored in batteries and ...



[Can I Use A 24V Inverter With A 12V Battery? Compatibility ...](#)

This ensures optimal performance and longevity of your setup. To use a 24V inverter with a 12V battery, you can connect two 12V batteries in series. Connecting batteries ...

[How to Connect an Inverter to a Battery: Step ...](#)

Learn how to safely and efficiently connect an inverter to a battery with our step-by-step guide. Includes brand-specific tips for Solis, Deye, Megarevo, SRNE, and more. Perfect for DIY enthusiasts and ...



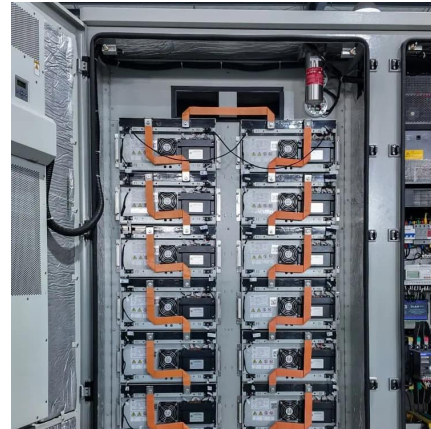
[How to Set Up a 24 Volt Solar System , A ...](#)

A 24 volt solar system uses multiple solar panels wired in series to produce a higher DC voltage output around 24V. This 24V DC electricity is stored in batteries and converted by inverters to power 24V ...



[How to connect a 24 Volt 220v Inverter to a ...](#)

A 24 Volt 220v Inverter is a device that converts direct current (DC) power from a battery into alternating current (AC) power, which can be used to run various electrical appliances.



Contact Us

For catalog requests, pricing, or partnerships, please visit:
<https://woodgoods.pl>

Scan QR Code for More Information



<https://woodgoods.pl>