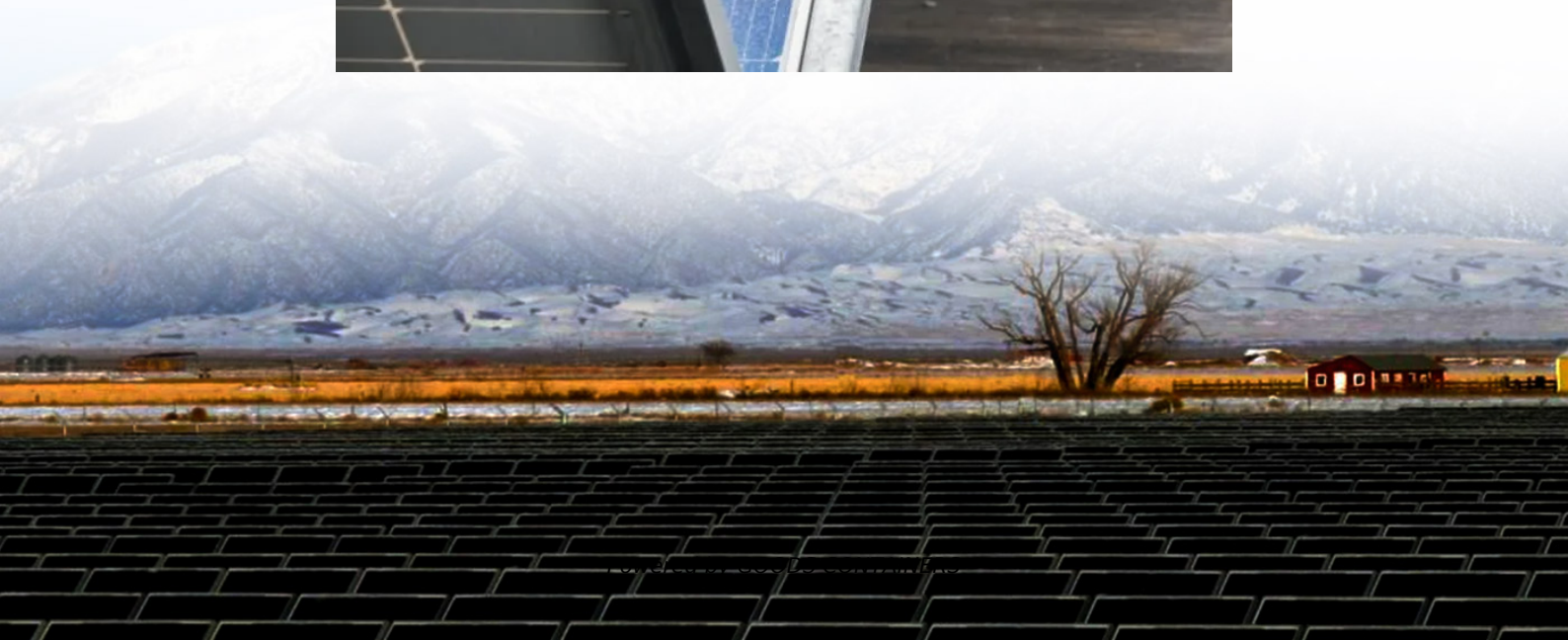


# **Inverter directly connected to battery**





## Overview

---

How do you connect an inverter to a battery?

Connect the positive cable first. Attach the red cable to the positive terminal on both the inverter and the battery. Attach the negative cable. Connect the black cable to the negative terminal, ensuring secure attachment to prevent loose connections. Always use insulated tools to avoid unintentional contact with live wires.

Can you connect multiple batteries to an inverter?

**Connecting Multiple Batteries to an Inverter** For increased power capacity, you can connect multiple batteries to your inverter. In a parallel connection, connect all positive terminals together and all negative terminals together. This setup increases capacity without changing the voltage.

What are inverter battery connections?

Inverter battery connections form the backbone of reliable power systems, ensuring efficient operation and safety. By following best practices and understanding the nuances of these connections, you can enhance system performance and longevity.

How do you use a car battery inverter?

Place the inverter on a stable surface 8. Connect the Positive battery clip to the battery positive terminal. 9. Connect the negative battery clip to a metal part of the vehicle frame. 10. Connect an appliance cord plug into the inverter or a USB power cord into the inverter. 11. Turn ON the inverter and use the appliance.



## Inverter directly connected to battery

---



### [Can I connect an inverter directly to a battery?](#)

Jun 12, 2024 · Yes, you can connect an inverter directly to a battery bank. Once the batteries are connected correctly, simply route the positive and negative wires from the inverter to the ...

### [Inverter Battery Connection: Essential Tips For Safe And ...](#)

Learn essential tips for safe and efficient inverter battery connection. Discover step-by-step guides, wiring techniques, and troubleshooting tips to optimize your power backup system's ...



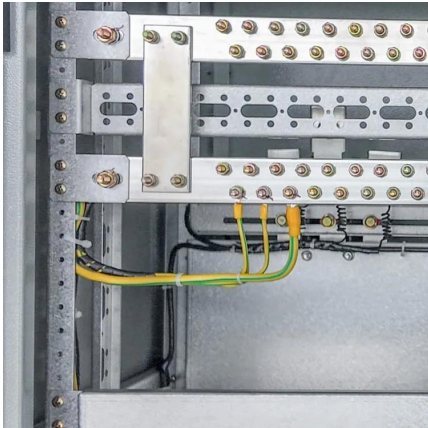
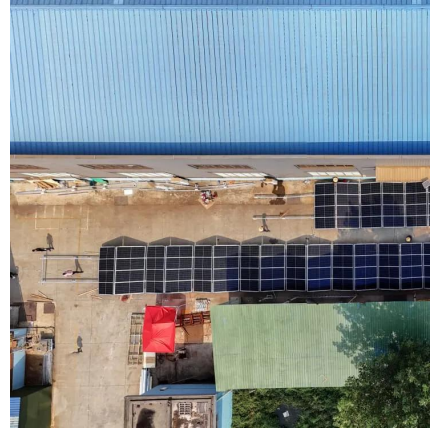
### [Can I Connect an Inverter Directly to a Battery? - ECGSOLAX](#)

May 30, 2023 · In today's increasingly connected world, having a reliable and efficient power source is essential. Battery paired with inverters provide a versatile solution for powering ...



### [How to Connect a Large or Small Inverter to a Battery](#)

Nov 28, 2017 · by: Justin Gray This blog answers questions about which inverters can be powered by 12V DC accessory outlets (cigarette lighter sockets) and which require wiring ...



### [Can I Attach My Small Inverter Directly to the Battery?](#)

Jul 14, 2025 · Yes, you can attach a small inverter directly to a battery, but doing it safely requires understanding voltage compatibility, wire sizing, and overload risks. Many DIYers assume it's ...

### [How to Connect an Inverter to a Battery: Step-by-Step Guide ...](#)

Mar 11, 2025 · Learn how to safely and efficiently connect an inverter to a battery with our step-by-step guide. Includes brand-specific tips for Solis, Deye, Megarevo, SRNE, and more. Perfect ...



## Contact Us

---

For catalog requests, pricing, or partnerships, please visit:  
<https://woodgoods.pl>



## Scan QR Code for More Information



<https://woodgoods.pl>