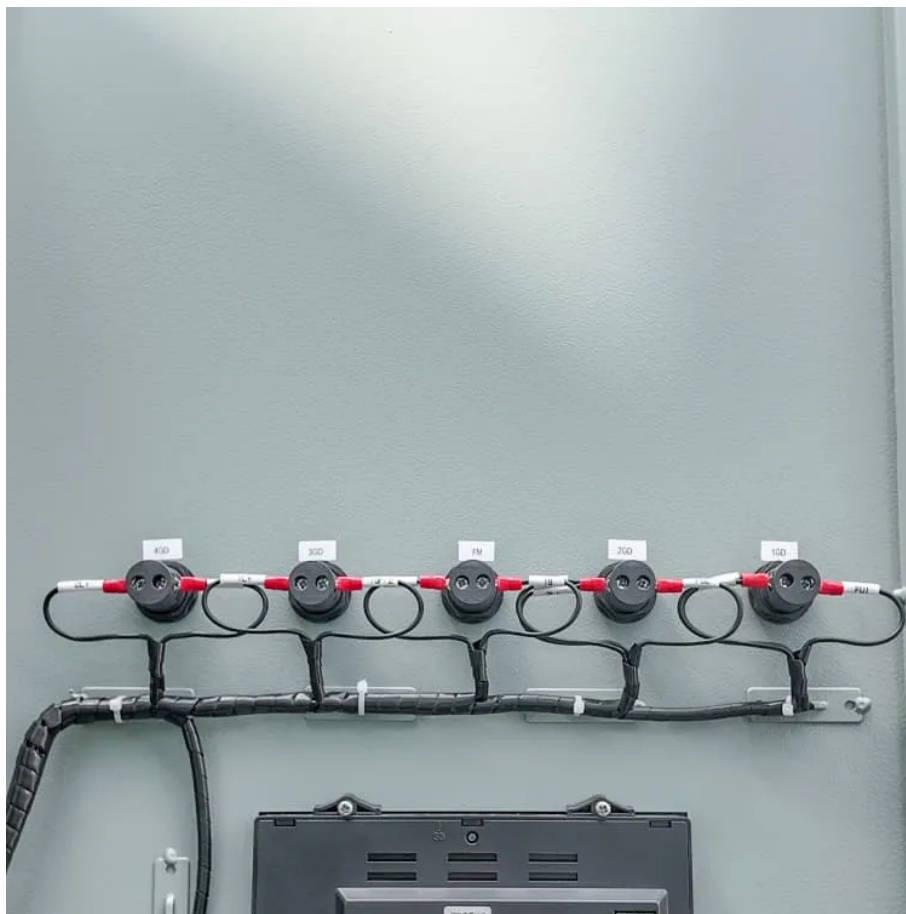


Inverter generates sine wave





Overview

How does a sine wave inverter work?

They convert direct current (DC) energy, such as that sourced from solar panels or batteries, into alternating current (AC) energy, the type used in most residential and commercial settings. A sine wave inverter operates by transforming a DC input into an AC output that closely mimics the pure sine wave of traditional power grid electricity.

What is a pure sine wave inverter?

Modern pure sine wave inverters are sophisticated electronic devices that play a crucial role in any solar power system. Their output power is much higher quality than modified sine wave inverters. The basic function of an inverter is to convert DC power output from the solar array into AC power output that we can use in our homes and businesses.

What is a modified sine wave inverter?

Modified sine wave inverters use simpler and cheaper electronics to produce a wave that is not quite a smooth sine wave. Pure sine wave inverters use more expensive electronics to generate a wave that is very close to a pure sine wave. The figure below compares outputs from a modified sine waver inverter and a pure sine wave inverter.

What voltage does a sine wave inverter use?

Input Voltage: This must match the voltage of your DC power source. Common values are 12V, 24V, or 48V. In conclusion, sine wave inverters play a crucial role in converting DC power from sources like batteries or solar panels into the AC power that most of our appliances and devices need.



Inverter generates sine wave



[? What is a Pure Sine Wave Inverter and Why ...](#)

Electricity that comes from the power grid is in the form of a sine wave--a smooth, repeating wave that maintains a consistent frequency (usually 50 or 60 Hz). A pure sine wave inverter produces a waveform ...

[An overall introduction of inverter waveform and the ...](#)

This article will give you a detailed introduction and comparison of inverter waveform, including the principles of generating different waveforms, and comparison between ...



[What Is Pure Sine Wave Inverter And Why Do ...](#)

What Is a Pure Sine Wave Inverter? A pure sine wave inverter (PSW) transforms direct current (from batteries, solar panels, or car batteries) into alternating current with a smooth, consistent waveform --just like the ...

[Sine Wave vs Square Wave Inverters: Key Differences](#)

A sine wave inverter generates a smooth AC waveform that closely matches the power you get from the grid. This clean and stable output is safe for sensitive electronics, ...



What Is a Pure Sine Wave Inverter and How ...

A pure sine wave inverter is a specialty device that transforms direct current (DC) electricity from sources like batteries or solar panels into alternating current (AC) electricity, generating a smooth and stable power ...



Pure Sine Wave Inverter A-Z , Theory , Types

Characteristics Key characteristics of a pure sine wave inverter: Clean and Smooth Output: A pure sine wave inverter generates a clean and smooth AC output waveform, which is nearly identical to the type of electricity ...



Sine Wave Inverters - Electricity - Magnetism

A sine wave inverter operates by transforming a DC input into an AC output that closely mimics the pure sine wave of traditional power grid electricity. This smooth, ...





[How Inverter Generators Work , Pure Sine Wave Power ...](#)

Learn how inverter generators work through a simple three-stage process that delivers clean, quiet, and efficient power. Understand pure sine wave output and low THD ...



[Pure Sine Wave Inverter A-Z , Theory , Types , Working](#)

Characteristics Key characteristics of a pure sine wave inverter: Clean and Smooth Output: A pure sine wave inverter generates a clean and smooth AC output waveform, which is nearly ...

[How Does A Pure Sine Wave Inverter Work?](#)

A sine wave inverter operates by transforming a DC input into an AC output that closely mimics the pure sine wave of traditional power grid electricity. This smooth, continuous, and periodically oscillating wave is ...



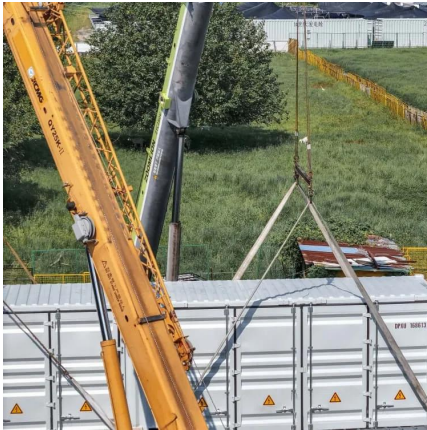
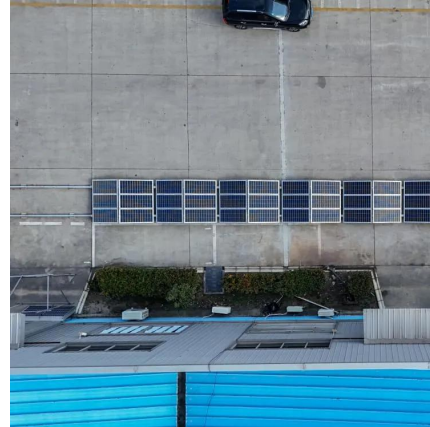
[What Is Pure Sine Wave Inverter And Why Do We Need It?](#)

What Is a Pure Sine Wave Inverter? A pure sine wave inverter (PSW) transforms direct current (from batteries, solar panels, or car batteries) into alternating current with a ...



What Is a Pure Sine Wave Inverter and How Does It Work?

A pure sine wave inverter is a specialty device that transforms direct current (DC) electricity from sources like batteries or solar panels into alternating current (AC) electricity, ...



? What is a Pure Sine Wave Inverter and Why Does it Matter?

Electricity that comes from the power grid is in the form of a sine wave--a smooth, repeating wave that maintains a consistent frequency (usually 50 or 60 Hz). A pure sine wave ...

Contact Us

For catalog requests, pricing, or partnerships, please visit:
<https://woodgoods.pl>

Scan QR Code for More Information



<https://woodgoods.pl>