

# **Inverter that can be plugged into AC power**





## Overview

---

What is a 12V inverter?

**12V Inverter.** A 12V inverter is an electrical device that converts 12 volts of DC power into AC power. The input power typically comes from a 12V battery. Modified sine wave power inverter can provide you 110/120V or 220/230V/240V AC power.

What is a DC to AC power inverter?

The main purpose of a DC to AC power inverter is to convert direct current (DC) electricity, typically from batteries, solar panels, or a car's electrical system, into alternating current (AC) electricity, which is the standard power type used by most household appliances and electronics. 2.

What is a car power inverter?

A car power inverter is a device that converts the DC power from a car's battery into AC power, similar to the power supplied by a standard electrical outlet. Car inverter typically plug into the car's cigarette lighter socket or connect directly to the battery terminals.

How does a portable inverter work?

You just connect the inverter to a battery, and plug your AC devices into the inverter . and you've got portable power . whenever and wherever you need it. The inverter draws its power from a 12 Volt battery (preferably deep-cycle), or several batteries wired in parallel.



## Inverter that can be plugged into AC power



[How DC/AC Power Inverters Work . HowStuffWorks](#)

Mar 7, 2024 · Since most of these electronic devices can be plugged into the cigarette lighter (or power port) in your vehicle, you may be wondering, " what is an inverter and why would I ever ...

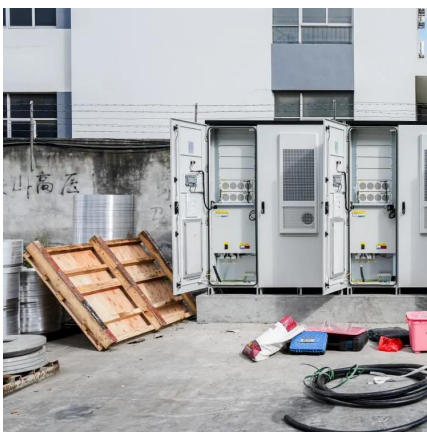
[Power Inverter. DC to AC Inverter . inverter](#)

A car power inverter is a device that converts the DC power from a car's battery into AC power, similar to the power supplied by a standard electrical outlet. Car inverter typically plug into the ...



[What does a power inverter do, and what can I use one for?](#)

The inverter draws its power from a 12 Volt battery (preferably deep-cycle), or several batteries wired in parallel. The battery will need to be recharged as the power is drawn out of it by the ...



[How to Choose the Best AC Inverter for Your Needs: A ...](#)

4 days ago · About AC Inverter An AC inverter is an electronic device that converts direct current (DC) electricity--typically from batteries or solar panels--into alternating current (AC) power, ...



### [Can I Plug In Solar Inverter Into My Outlet?](#)

Feb 13, 2025 · Plugging a traditional solar panel directly into an outlet is unsafe and ineffective as it produces DC power that needs to be converted to AC using an inverter. A "plug-and-play" ...



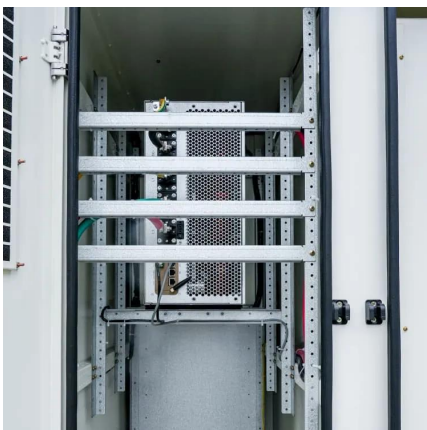
### [A Comprehensive Guide to DC to AC Power Inverters](#)

Jun 27, 2025 · Automotive Use: Smaller DC to AC power inverters can plug into a car's cigarette lighter outlet, allowing you to charge laptops, power tools, or even small air compressors on ...



### [Converting DC to AC: Basic Principles of Inverters](#)

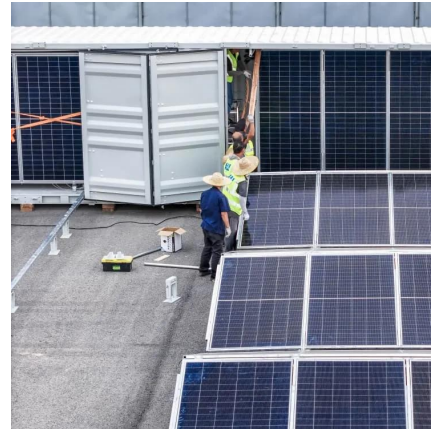
May 28, 2024 · This article investigates the basic principles of inverters, different types of DC-to-AC conversion, and common applications for generating AC voltage in manufacturing.





### [A Compilation of the Best Power Inverters and Converters ...](#)

Oct 31, 2024 · What is an Inverter? An inverter is an electrical device that converts Direct Current (DC) into Alternating Current (AC). DC power is typically generated by renewable energy ...



### [DC to AC Inverters: Everything You Need to Know - Hinen](#)

May 15, 2024 · AC power will always constantly reverse direction, normally at the frequency of 50 Hz or 60 Hz. By using the inverters, you can control the flow of DC electricity and make it ...

## Contact Us

---

For catalog requests, pricing, or partnerships, please visit:  
<https://woodgoods.pl>

**Scan QR Code for More Information**



<https://woodgoods.pl>