

# **Is Port Louis a flywheel energy storage motor**





## Overview

---

How does a flywheel energy storage system work?

Flywheel Energy Storage Systems (FESS) rely on a mechanical working principle: An electric motor is used to spin a rotor of high inertia up to 20,000-50,000 rpm. Electrical energy is thus converted to kinetic energy for storage. For discharging, the motor acts as a generator, braking the rotor to produce electricity.

Can flywheels be used for power storage systems?

Flywheels are now a possible technology for power storage systems for fixed or mobile installations. FESS have numerous advantages, such as high power density, high energy density, no capacity degradation, ease of measurement of state of charge, don't require periodic maintenance and have short recharge times .

What is a flywheel energy storage system (fess)?

The operation of the electricity network has grown more complex due to the increased adoption of renewable energy resources, such as wind and solar power. Using energy storage technology can improve the stability and quality of the power grid. One such technology is flywheel energy storage systems (FESSs).

What type of motor is used in a flywheel energy storage system?

**Permanent-Magnet Motors for Flywheel Energy Storage Systems** The permanent-magnet synchronous motor (PMSM) and the permanent-magnet brushless direct current (BLDC) motor are the two primary types of PM motors used in FESSs. PM motors boast advantages such as high efficiency, power density, compactness, and suitability for high-speed operations.



## Is Port Louis a flywheel energy storage motor

---

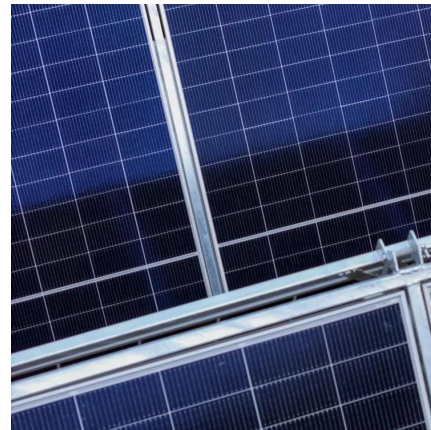


### [A review of flywheel energy storage systems: state of the ...](#)

Mar 15, 2021 · This paper gives a review of the recent Energy storage Flywheel Renewable energy Battery Magnetic bearing developments in FESS technologies. Due to the highly ...

### [Flywheel Energy Storage Systems and Their Applications: A ...](#)

Apr 1, 2024 · This study gives a critical review of flywheel energy storage systems and their feasibility in various applications. Flywheel energy storage systems have gained increased ...



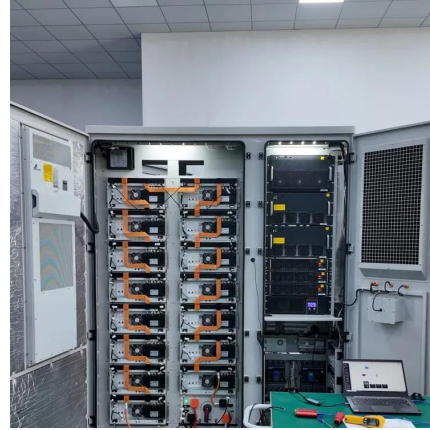
### [Flywheel Energy Storage Systems and their Applications: ...](#)

Oct 19, 2024 · Flywheel energy storage systems are suitable and economical when frequent charge and discharge cycles are required. Furthermore, flywheel batteries have high power ...



### [Optimising flywheel energy storage systems for enhanced ...](#)

Jun 1, 2025 · Concerns about global warming and the need to reduce carbon emissions have prompted the creation of novel energy recovery systems. Continuous braking results in ...



[A review of flywheel energy storage systems: state of the art ...](#)

Feb 1, 2022 · Thanks to the unique advantages such as long life cycles, high power density, minimal environmental impact, and high power quality such as fast response and voltage ...



[Flywheel Energy Storage Systems and their Applications: ...](#)

Oct 19, 2024 · Flywheel energy storage systems have gained increased popularity as a method of environmentally friendly energy storage. Fly wheels store energy in mechanical rotational ...



[A Review of Flywheel Energy Storage System Technologies](#)

Sep 7, 2023 · Using energy storage technology can improve the stability and quality of the power grid. One such technology is flywheel energy storage systems (FESSs). Compared with other ...





### [Revisiting Flywheel Energy Storage for Short-distance Ferry ...](#)

Oct 19, 2025 · The low demand for electric power during overnight periods between 11:00 PM and 6:00 AM allows for recharge of port side, electrical energy storage technology at low cost, ...



## Contact Us

---

For catalog requests, pricing, or partnerships, please visit:  
<https://woodgoods.pl>

### Scan QR Code for More Information



<https://woodgoods.pl>