

Large outdoor power box installation





Overview

Should you install an outdoor electrical box?

Installing an outdoor electrical box can improve homeowners' access to power for outdoor lighting, chargers, and other lawn equipment.

What is an outdoor electrical box?

An outdoor electrical box is often referred to as a weatherproof outlet box, junction box, or exterior outlet box. These boxes are designed to house electrical wiring, receptacles, and circuit breakers, protecting them from moisture, debris, and damage. There are three common types: Surface-mounted boxes.

How do you install an outdoor outlet box?

Installing an outdoor outlet box requires proper tools and adherence to electrical codes. Turn off the power. Shut off the circuit at the breaker box to avoid electric shock. Choose the right location. Use a stud finder to secure the box to a solid surface. Drill pilot holes. Use a drill bit to create openings for the new wires.

How do I install a junction box for an exterior light fixture?

In summary, successfully installing a junction box for an exterior light fixture involves several critical steps. Begin by gathering the necessary tools and materials, followed by meticulous preparation for installation. Next, install the junction box securely, then run the electrical cable, ensuring it is well-protected.



Large outdoor power box installation



[Outside Power Box: The Ultimate Lighting Contractor Checklist](#)

An outdoor power box is typically weatherproof and designed to house electrical connections for outdoor lighting systems. It protects the wiring from the elements while providing a safe and ...

[How To Safely Install an Outdoor Electrical Box for Your ...](#)

Tip: If installing a junction box for power tools, choose a metal conduit for added durability. How Much Does It Cost to Put in an Outdoor Electrical Box? The cost varies depending on whether ...



[How To Install Electrical Box For Exterior Light Fixture](#)

Aug 27, 2025 · To ensure safety, cut power to the circuit and check electrical codes before starting any electrical project. Run an underground electrical line into the garden to power an ...

[How to Install Outdoor Light Fixture Box - Sleek Space](#)

Oct 7, 2024 · When you are planning to install an outdoor light fixture, it's essential to use an outdoor light fixture box that is built to withstand the elements. These boxes, also known as ...



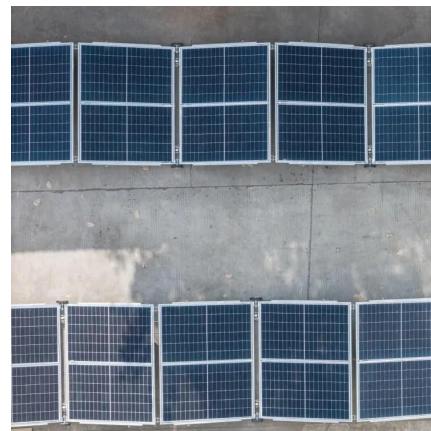
[Weatherproof Collapsible Box , Masterplug Portable Power](#)

1 day ago · Discover the Masterplug Weatherproof Collapsible Enclosure - a versatile IP54-rated outdoor electrical box, perfect for protecting cables, timers, and transformers. Featuring ...



[How to Install Junction Box for Exterior Light Fixture](#)

Aug 29, 2024 · Finally, the installation must be sealed and weatherproofed to protect against moisture and environmental elements. Each of these steps is essential in understanding how ...



[How To Add An Exterior Light Fixture Box](#)

Oct 22, 2025 · To install an outdoor electrical box, choose a location close to wires, studs, or joists, and take a shortest and cheapest method for bringing power to a remote spot without ...





[A Comprehensive Guide to electric box outside Installation ...](#)

Post-Installation Checks and Setup Once the installation is complete, performing thorough inspections and tests ensures that the electric box functions as intended and adheres to safety ...



[How to Choose and Install an Outdoor Outlet Box](#)

Nov 10, 2025 · An outdoor outlet box is a specialized enclosure designed to protect electrical wiring and receptacles from harsh environmental hazards like rain, snow, debris, and UV ...

Contact Us

For catalog requests, pricing, or partnerships, please visit:
<https://woodgoods.pl>

Scan QR Code for More Information



<https://woodgoods.pl>