

# **Measure the internal resistance of new energy battery cabinet**





## Overview

---

What is the internal resistance of a battery?

Although batteries' internal resistance would ideally be zero, internal resistance exists due to a variety of factors. Internal resistance increases as a battery degrades. On battery cell production lines, defective cells are detected by comparing the internal resistance of tested cells to that of known-good reference cells.

How to measure battery internal resistance?

The battery internal resistance is usually measured in milliohms ( $m\Omega$ ), and measurement methods include AC impedance measurement (EIS), DC voltage drop method, LCR meter test, etc. Ohmic resistance: determined by the electrodes, electrolyte, conductive materials, etc. inside the battery, mainly affecting the instantaneous voltage drop.

How do you measure a battery voltage without a load?

Measuring a battery voltage without any load with a voltmeter starts the process of calculating its internal resistance. Then, connect a load with known resistance across the battery and track the voltage once more. Having gotten these readings, you should do some paperwork. There are several ways to measure a battery's internal resistance.

How do you measure DC internal resistance?

DC internal resistance measurement typically employs the current pulse method. The principle is as follows: Apply a constant current pulse to the battery. Record the instantaneous change in battery voltage.  $R = \Delta V / \Delta I$



## Measure the internal resistance of new energy battery cabinet



### [Battery internal resistance - comprehensive analysis and ...](#)

Mar 20, 2025 · In industries such as electric vehicles and battery energy storage systems, battery internal resistance directly affects overall energy efficiency, endurance, and safety. Therefore, ...

### [Methods for Measuring Battery Internal Resistance: A ...](#)

Feb 2, 2024 · Learn the key methods for measuring battery internal resistance, including open circuit voltage, constant current discharge, AC measurement, and electrochemical impedance ...



### [Lithium-ion Battery Internal Resistance Testing](#)

What Is Internal Resistance Testing of Lithium-Ion Batteries? When to Test Internal Resistance How to Measure Internal Resistance There are two methods for measuring internal resistance: the AC method (AC-IR) and the DC method (DC-IR). Testing on production lines uses the AC method, which is introduced by this article. When measuring the internal resistance of a battery cell using the AC method, an AC resistance meter specifically designed to measure low resistance levels (i . See more on hioki Battery University

## **BU-902: How to Measure Internal Resistance**

The internal resistance provides valuable information about a battery as high reading hints



at end-of-life. This is especially true with nickel-based ...

### [How to Measure Internal Resistance of a Battery](#)

Feb 14, 2023 · A commonly encountered school-level Physics practical is the determination of the internal resistance of a battery - typically an AA or D cell. Typically this is based around a ...

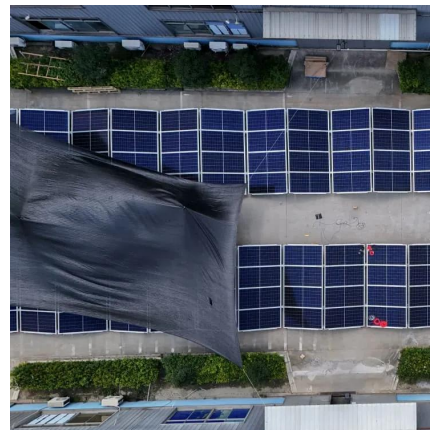


### [DCIR Testing: Measure Battery Internal Resistance Accurately](#)

Sep 3, 2025 · What is DCIR? Direct Current Internal Resistance (DCIR) refers to the resistance value calculated using Ohm's Law by applying a direct current step signal to a battery and ...

### [Lithium-ion Battery Internal Resistance Testing](#)

What is internal resistance testing of lithium-ion batteries? Although batteries' internal resistance would ideally be zero, internal resistance exists due to a variety of factors. Internal resistance ...



### [Internal Resistance of a Battery: How to Measure It - Flex PCB](#)

Aug 29, 2024 · What is Battery Internal Resistance? Battery internal resistance is a crucial parameter that determines the performance and efficiency of a battery. It is the measure of ...



### [How To Find Internal Resistance of a Battery](#)

May 20, 2025 · Understanding internal resistance is important for engineers, electricians, and even everyday users who want to evaluate battery performance. It also helps when you're ...



### [How to Measure the Internal Resistance of a Battery?](#)

2 days ago · Introduction Battery internal resistance is a critical performance parameter that determines the runtime, power delivery, current capabilities, efficiency and health of a battery. ...

### **Four common methods for detecting internal resistance in battery ...**

Four common methods for detecting internal resistance in battery module aging cabinets - EST group is a national high-tech enterprise that provides full industry supply chain services for the ...





## Contact Us

---

For catalog requests, pricing, or partnerships, please visit:  
<https://woodgoods.pl>

### Scan QR Code for More Information



<https://woodgoods.pl>