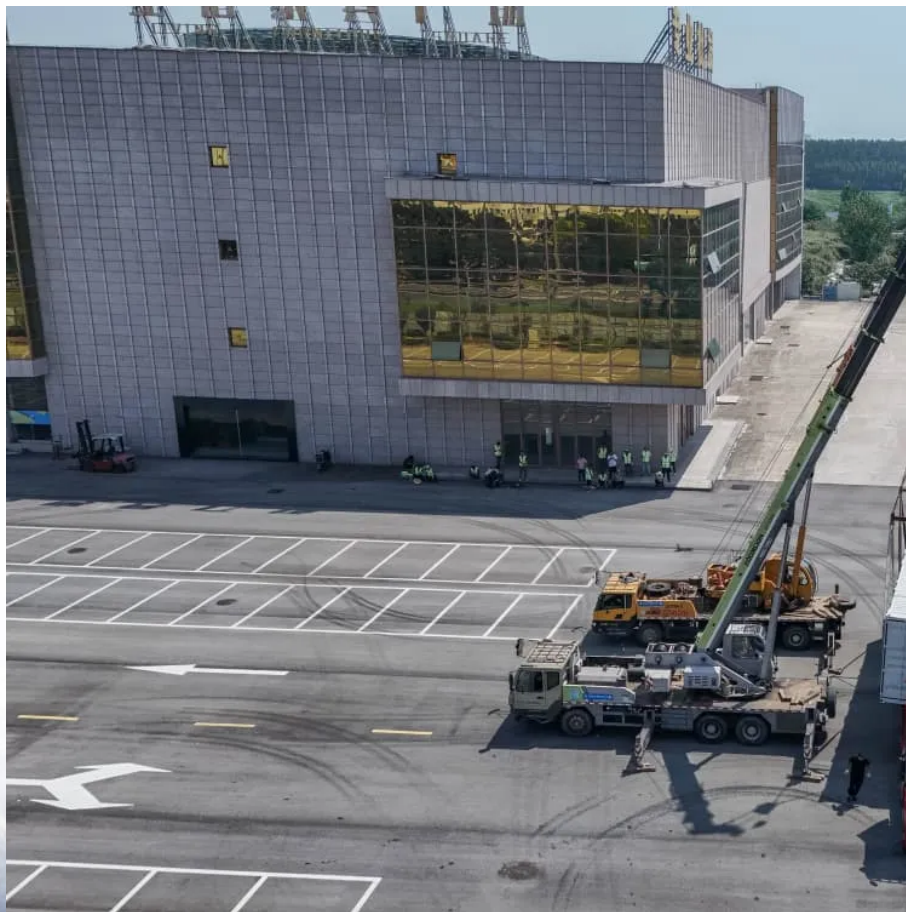


Minsk solar container communication station wind and solar complementary aluminum





Overview

Can a multi-energy complementary power generation system integrate wind and solar energy?

Simulation results validated using real-world data from the southwest region of China. Future research will focus on stochastic modeling and incorporating energy storage systems. This paper proposes constructing a multi-energy complementary power generation system integrating hydropower, wind, and solar energy.

Can a solar-wind system meet future energy demands?

Accelerating energy transition towards renewables is central to net-zero emissions. However, building a global power system dominated by solar and wind energy presents immense challenges. Here, we demonstrate the potential of a globally interconnected solar-wind system to meet future electricity demands.

Can clustering analysis be applied to wind and solar power generation?

Clustering analysis can be applied to wind and solar power generation, and scholars have proposed a coordinated optimization scheduling scheme for hydropower, wind, and photovoltaic resources.

What is the maximum integration capacity of wind and solar power?

At this ratio, the maximum wind-solar integration capacity reaches 3938.63 MW, with a curtailment rate of wind and solar power kept below 3 % and a loss of load probability maintained at 0 %. Furthermore, under varying loss of load probabilities, the total integration capacity of wind and solar power increases significantly.



Minsk solar container communication station wind and solar comple



[Shipping Container Solutions for the Wind & Solar Energy ...](#)

Create modern, eco-friendly spaces with Corner Cast's shipping container solutions. Our bespoke designs offer innovative, affordable, and sustainable wind and solar energy spaces tailored to ...

[Optimal Design of Wind-Solar complementary power ...](#)

Dec 15, 2024 · The results indicate that a wind-solar ratio of around 1.25:1, with wind power installed capacity of 2350 MW and photovoltaic installed capacity of 1898 MW, results in ...



[Globally interconnected solar-wind system addresses future ...](#)

May 15, 2025 · A globally interconnected solar-wind power system can meet future electricity demand while lowering costs, enhancing resilience, and supporting a stable, sustainable ...



Ranking of domestic global communication base station wind and solar

Traditionally powered by coal-dominated grid electricity, these stations contribute significantly to operational costs and air pollution. This study offers a comprehensive roadmap for low-carbon ...



[Modular Solar Power Station Containers: The Future of ...](#)

Feb 13, 2025 · Modular solar power station containers represent a revolutionary approach to renewable energy deployment, combining photovoltaic technology with standardized shipping ...



[Wind-solar hybrid for outdoor communication base ...](#)

5 days ago · Integrated Solar-Wind Power Container for Communications This large-capacity, modular outdoor base station seamlessly integrates photovoltaic, wind power, and energy ...



[Integrated Solar-Wind Power Container for Communications](#)

This large-capacity, modular outdoor base station seamlessly integrates photovoltaic, wind power, and energy storage to provide a stable DC48V power supply and optical distribution. Perfect ...





Contact Us

For catalog requests, pricing, or partnerships, please visit:
<https://woodgoods.pl>

Scan QR Code for More Information



<https://woodgoods.pl>