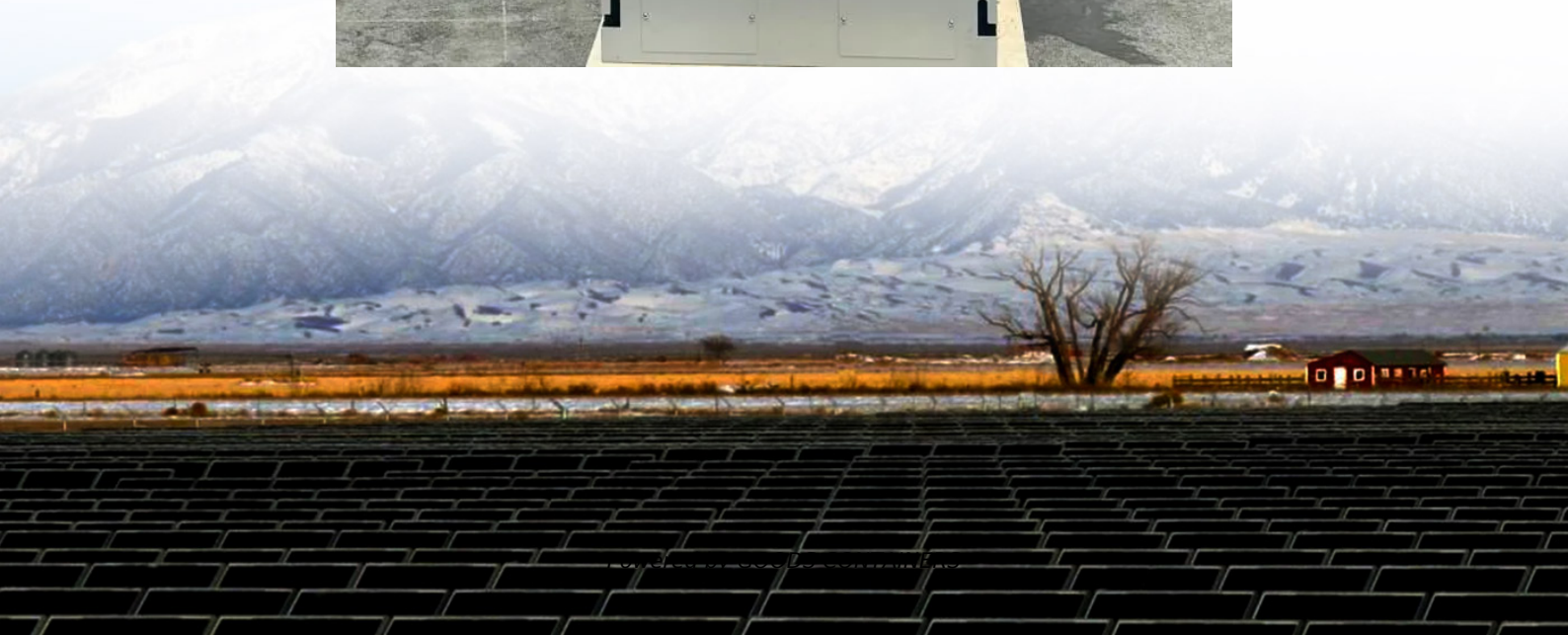


Monocrystalline solar panel specifications





Overview

How efficient are monocrystalline solar panels?

Monocrystalline solar panels are usually 20-25% efficient. are around 10-20% efficient. This means that monocrystalline panels can convert more daylight into electricity for your household and the grid than other types of panels, per square metre.

What is a monocrystalline solar panel?

Monocrystalline Solar Panels are manufactured in 60, 72, and 96 cell configurations with a solar efficiency between 15-25%. Monocrystalline Solar Panels have typical heights of 64", 76.5" (163, 194 cm), widths of 39", 51.5" (99, 131 cm), and depths between 1.2"-2" (3-5 cm). Solar cell sizes are 6" x 6" (15 x 15 cm).

How much does a monocrystalline solar & battery system cost?

A 4.5kWp monocrystalline solar & battery system usually costs around £11,307, including the price of installation. This should get you 10 solar panels, each with a 450-watt peak power rating, as well as a 5kWh battery.

What are the different types of monocrystalline panels?

Amidst this stunning display of monocrystalline dominance, manufacturers paired these panels with five different technologies: TOPCon, PERC p-type and n-type, HJT, and back contact (more detail on these in the next section).



Monocrystalline solar panel specifications



Data Sheets for Monocrystalline & Polycrystalline Products , Solar

Oct 13, 2015 · Data Sheets for the Polycrystalline and Monocrystalline Glass/Glass Panel Range offered by Solar Electric UK. Technical specifications for both the Monocrystalline & ...

[Monocrystalline Solar Panel: Advantages & Key Specifications ...](#)

For solar installers and high-energy businesses, choosing reliable monocrystalline solar panel models, understanding the advantages of monocrystalline solar panels (to justify investment), ...



[ESP Monocrystalline Solar Module Datasheet ESP 6M series](#)

Jun 11, 2025 · +85°C Vapour heat test in climatic chamber: 1 000 hours at 85°C and 85% relative humidity. Front and back panel load test: simulated wind load of 5400 Pa, equivalent to 5400 ...

Contact Us

For catalog requests, pricing, or partnerships, please visit:
<https://woodgoods.pl>



Scan QR Code for More Information



<https://woodgoods.pl>