

Port Moresby substation 5g network base station





Overview

What is Port Moresby power station?

The Port Moresby Power Station will provide reliable power to Port Moresby and is the lowest cost dedicated grid connected thermal generation in the country. Replacing heavy fuel oil and diesel, the gas-fired power plant also brings a material reduction in the environmental impact from power generation in PNG.

Who owns the PNG national submarine cable network?

The PNG National Submarine Cable Network is implemented by PNG DataCo Ltd, a wholesale subsidiary of Kumul Telikom Holdings and a State-owned commercial entity. The PNG National Submarine Cable Network is supplied by HMN Tech. The PNG National Submarine Cable Network has been renamed later as the Kumul Submarine Cable Network (KSCN).

What is 5G delivery robot?

5G Delivery robot. control, real-time data acquisition, real-time return and real-time analysis are realized, which is used for patrol inspection scenario applications in ports. In July 2021, it officially won the bid for the inspection project of China Harbor and Hong Kong. Customize the aircraft + load



Port Moresby substation 5g network base station

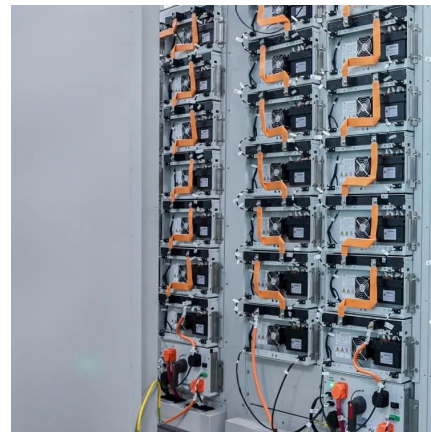


[PNG LNG-fed power station near Port Moresby starts ...](#)

May 26, 2025 · It has the capacity to produce 58MW baseload power to the Port Moresby power grid through a new power line and substation network. This represents approximately 29 ...

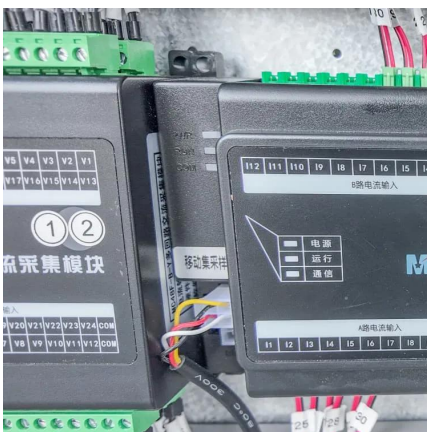
[47356-002: Power Sector Development Project](#)

Jun 15, 2022 · The project will support the strengthening and expansion of the transmission and distribution system within the main power grids of PNG Power Limited (PPL) by (i) expanding ...



[Learn What a 5G Base Station Is and Why It's Important](#)

Nov 13, 2024 · A 5G base station is the heart of the fifth-generation mobile network, enabling far higher speeds and lower latency, as well as new levels of connectivity. Referred to as ...

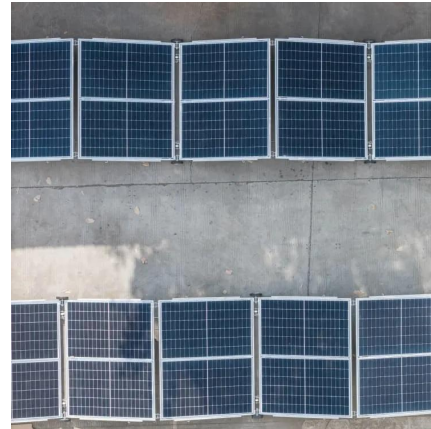


[Port of Singapore to install more 5G base stations, enabling ...](#)

Mar 7, 2025 · Up to seven more base stations will be operationalised by 2025 to complete Maritime 5G coverage in all Singapore port's major



fairways, anchorages, terminals and ...



[3G / 4G / 5G coverage in Port-Moresby, National Capital ...](#)

This map represents the coverage of 2G, 3G, 4G and 5G mobile networks in Port-Moresby, National Capital District. See also : mobile bitrates map in Port-Moresby, National Capital District.

Analysis of the Impact of Substation Switching Operations on 5G Base

This paper proposes an analysis method of an electromagnetic disturbance at the antenna feeder port of a 5G base station under the condition of switching operation of a substation.



Contact Us

For catalog requests, pricing, or partnerships, please visit:
<https://woodgoods.pl>



Scan QR Code for More Information



<https://woodgoods.pl>