

Power station generator BESS





Overview

How is Bess used in power generation?

And how is it used in power generation?

BESS stands for Battery Energy Storage System, a technology designed to store electrical energy in batteries and release it when needed. These systems play a crucial role in balancing supply and demand in power grids, improving energy efficiency, and supporting renewable energy integration.

How does Bess work with diesel generators?

Here's how BESS works with diesel generators: In a BESS-diesel hybrid system, both the diesel generator and the BESS work together to supply power. The system typically works in the following manner: Diesel Generator for Base Load: The diesel generator supplies power to meet the base load of a site or application.

How does a BES generator work?

When a diesel generator or another energy source produces electricity, a portion of that energy is converted into electrical energy and stored in the BES unit. The stored energy can then be programmed to release when needed, providing a seamless and reliable power supply without relying entirely on fuel-driven generators.

Can a Bess generator be used as a backup?

In systems that incorporate renewable energy sources like solar, the BESS can store excess renewable energy during the day when solar output is high. The diesel generator can then be used as a backup when renewable energy and the BESS are insufficient to meet demand (e.g., at night or during cloudy weather).



Power station generator BESS

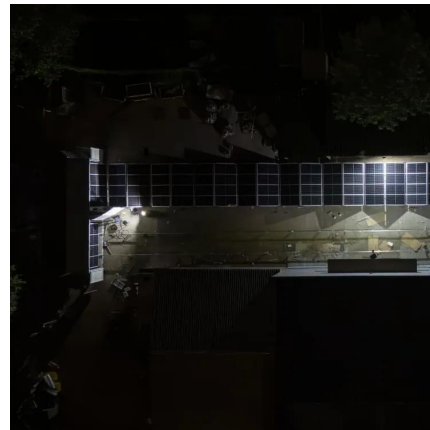


[BESS for Diesel Generators: A Smart Hybrid Power Solution](#)

In the quest for more reliable, efficient, and sustainable power, a powerful synergy is emerging. The integration of Battery Energy Storage Systems with traditional diesel generators is ...

Using generators and battery storage for low-emission temporary power

When upgrading or maintaining power infrastructure, the need for reliable temporary power is crucial, especially to support variable loads. Traditional approaches often rely heavily on ...



[Battery Energy Storage System \(BESS\) 101. Lightsource bp](#)

Utility-scale battery storage systems are uniquely equipped to deliver a faster response rate to grid signals compared to conventional coal and gas generators. BESS could ramp up or ramp ...

[Battery energy storage system \(BESS\) integration into power ...](#)

2 days ago · Primary power source support: in remote oil and gas operations where diesel or gas generators are the primary power source, BESS can store excess energy and provide backup ...



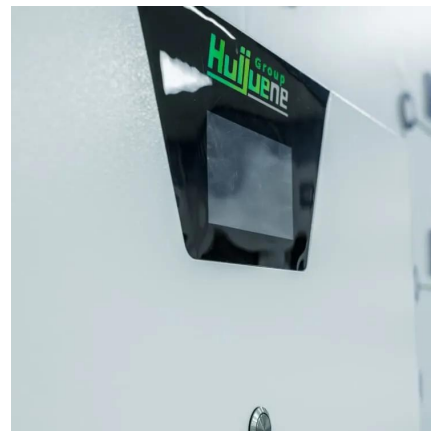
[Grid Application & Technical Considerations for Battery ...](#)

Nov 9, 2024 · Energy Storage - The First Class In the quest for a resilient and efficient power grid, Battery Energy Storage Systems (BESS) have emerged as a transformative solution. This ...



[BESS: What Is It and Its Role in Power Generation?](#)

Oct 3, 2025 · Example of a BESS-Diesel Hybrid Application: Remote Areas: In off-grid locations such as islands or rural communities, diesel generators are often the primary source of power. ...



On BESS Capacity Optimization of Hybrid Coal-Fired Generator and BESS

Apr 4, 2025 · To obtain a cost-effective BESS investment, this paper develops a new sizing method, which optimizes the BESS capacity by simulating the operation of the hybrid coal ...





Contact Us

For catalog requests, pricing, or partnerships, please visit:
<https://woodgoods.pl>

Scan QR Code for More Information



<https://woodgoods.pl>