

# **Rooftop construction small base station equipment lead-acid battery**





## Overview

---

What is a lead acid battery?

**Lead Acid Battery Definition:** A lead acid battery is defined as a rechargeable battery that uses lead and sulfuric acid to store and release electrical energy.  
**Container Construction:** The container is made from acid-resistant materials and includes features to support and separate the plates.

What is a lead acid battery container?

The container is a fundamental part of the lead acid battery's construction. There are, in general, two methods of producing the active materials of the cell and attaching them to lead plates. These are known after the names of their inventors. Plante plates or formed lead acid battery plates. Faure plates or pasted lead acid battery plates.

How many parts are in a lead acid battery?

There are mainly two parts in a lead acid battery. The container and plates.  
**Lead Acid Battery Container** As this battery container mainly contains sulfuric acid hence the materials used for making a lead acid battery container must be resistant to sulfuric acid.

What materials are used to make a lead acid battery?

The glass, lead lined wood, ebonite, hard rubber or bituminous compound, ceramic materials and molded plastics are having the above mentioned properties, hence the container of lead acid battery is made of either of those materials. The container is tightly sealed with top cover.



## Rooftop construction small base station equipment lead-acid batter



### Types of Batteries in Electric Construction & Landscape Equipment

Jul 1, 2024 · Lithium-Ion Batteries vs. Lead Acid Batteries Two of the most common chemistries found in today's batteries are lithium-ion and lead acid. The lithium-ion battery hit the market in ...

### Key Considerations When Installing Lead-Acid Batteries for Telecom Base

Sep 27, 2024 · When installing lead-acid batteries in telecom base stations, several critical factors must be considered to ensure efficient, safe, and long-lasting performance. Proper installation ...

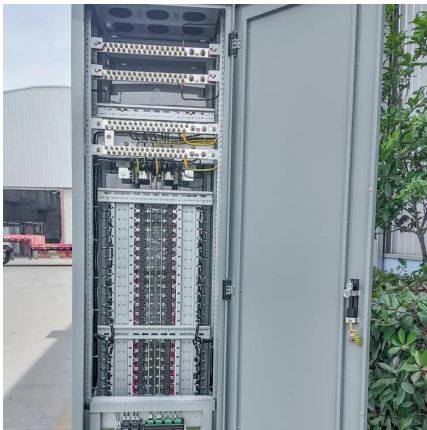


### The 200Ah communication base station backup power lead-acid battery

Energy storage lead-acid batteries for power supply and communication base stations meet the technical needs of modern telecom operators who tend to integrate, miniaturize, and lighten ...

### [Heavy-Duty Lead-Acid Batteries for Construction Equipment](#)

4 days ago · Among the various power sources used to fuel these heavy-duty machines, lead-acid batteries stand out as a trusted and durable choice. In this article, we will explore why lead ...

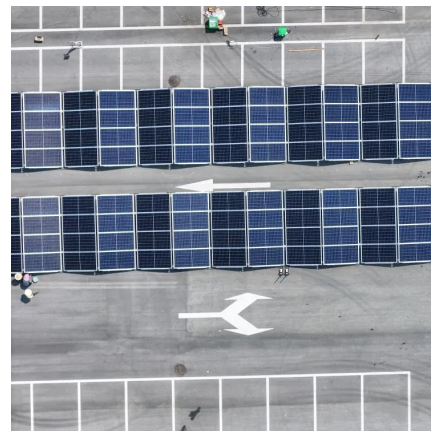


### Ultimate Guide to Base Station Power Selection: Lithium vs. Lead-Acid

Nov 17, 2025 · LiFePO4 is the preferred lithium battery chemistry for telecom base stations, known for its high performance and long lifespan. High energy density (120-180 Wh/kg) --  
...

### Choosing the Right Battery for Base Stations: LiFePO4 vs. Lead-Acid ...

LiFePO4 batteries and lead-acid batteries are used in base stations, mainly considering that different discharge rates have less influence on the discharge capacity of such batteries, and ...



## Contact Us

---

For catalog requests, pricing, or partnerships, please visit:  
<https://woodgoods.pl>



## Scan QR Code for More Information



<https://woodgoods.pl>